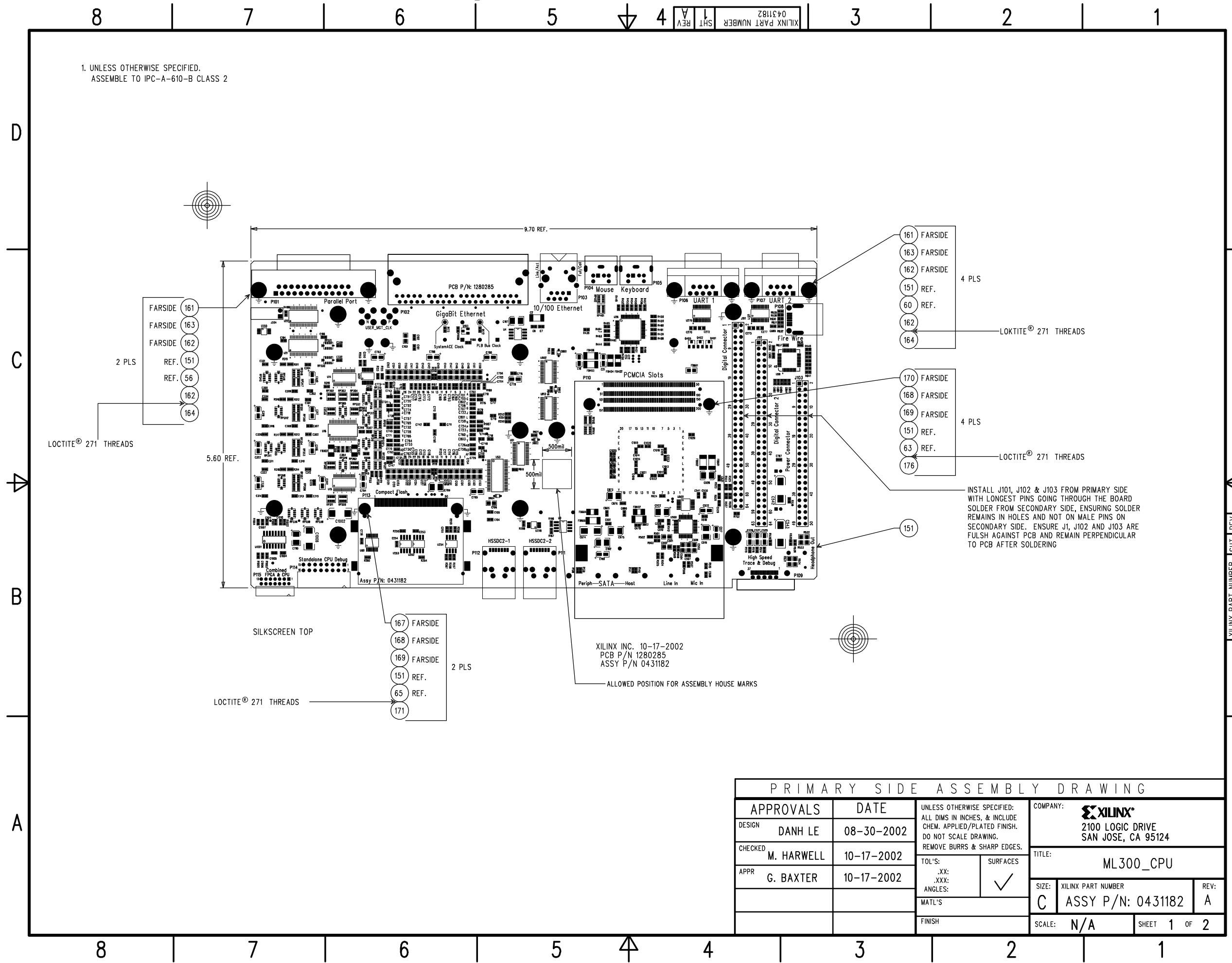


REV	DESCRIPTION	APPD BY	DATE
	SEE SHEET 1		

SECONDARY SIDE ASSEMBLY DRAWING			
DESIGN	DANH LE	DATE	08-30-2002
CHECKED	M. HARWELL	DATE	10-17-2002
APPR	G. BAXTER	DATE	10-17-2002
UNLESS OTHERWISE SPECIFIED: ALL DIMS IN INCHES, & INCLUDE CHEM. APPLIED/PLATED FINISH. DO NOT SCALE DRAWING. REMOVE BURRS & SHARP EDGES.		COMPANY: <b>XILINX</b> 2100 LOGIC DRIVE SAN JOSE, CA 95124	
TOL'S: .XX: .XXX: ANGLES: MATL'S		SURFACES ✓	
FINISH		TITLE: ML300_CPU	
SCALE: N/A		SIZE: XILINX PART NUMBER C ASSY P/N: 0431182	REV: A
SHEET 2 OF 2			



1. UNLESS OTHERWISE SPECIFIED.  
ASSEMBLE TO IPC-A-610-B CLASS 2

LOCTITE® 271 THREADS

2 PLS

5.60 REF.

SILKSCREEN TOP

LOCTITE® 271 THREADS

2 PLS

XILINX INC. 10-17-2002  
PCB P/N 1280285  
ASSY P/N 0431182

ALLOWED POSITION FOR ASSEMBLY HOUSE MARKS

INSTALL J101, J102 & J103 FROM PRIMARY SIDE WITH LONGEST PINS GOING THROUGH THE BOARD SOLDER FROM SECONDARY SIDE, ENSURING SOLDER REMAINS IN HOLES AND NOT ON MALE PINS ON SECONDARY SIDE. ENSURE J1, J102 AND J103 ARE FULSH AGAINST PCB AND REMAIN PERPENDICULAR TO PCB AFTER SOLDERING

PRIMARY SIDE ASSEMBLY DRAWING			
DESIGN	DANH LE	DATE	08-30-2002
CHECKED	M. HARWELL	DATE	10-17-2002
APPR	G. BAXTER	DATE	10-17-2002
UNLESS OTHERWISE SPECIFIED: ALL DIMS IN INCHES, & INCLUDE CHEM. APPLIED/PLATED FINISH. DO NOT SCALE DRAWING. REMOVE BURRS & SHARP EDGES.		COMPANY: <b>XILINX</b> 2100 LOGIC DRIVE SAN JOSE, CA 95124	
TOL'S: .XX: .XXX: ANGLES:		SURFACES ✓	
TITLE: ML300_CPU		XILINX PART NUMBER ASSY P/N: 0431182	
MATERIALS		SCALE: N/A	
FINISH		SHEET 1 OF 2	