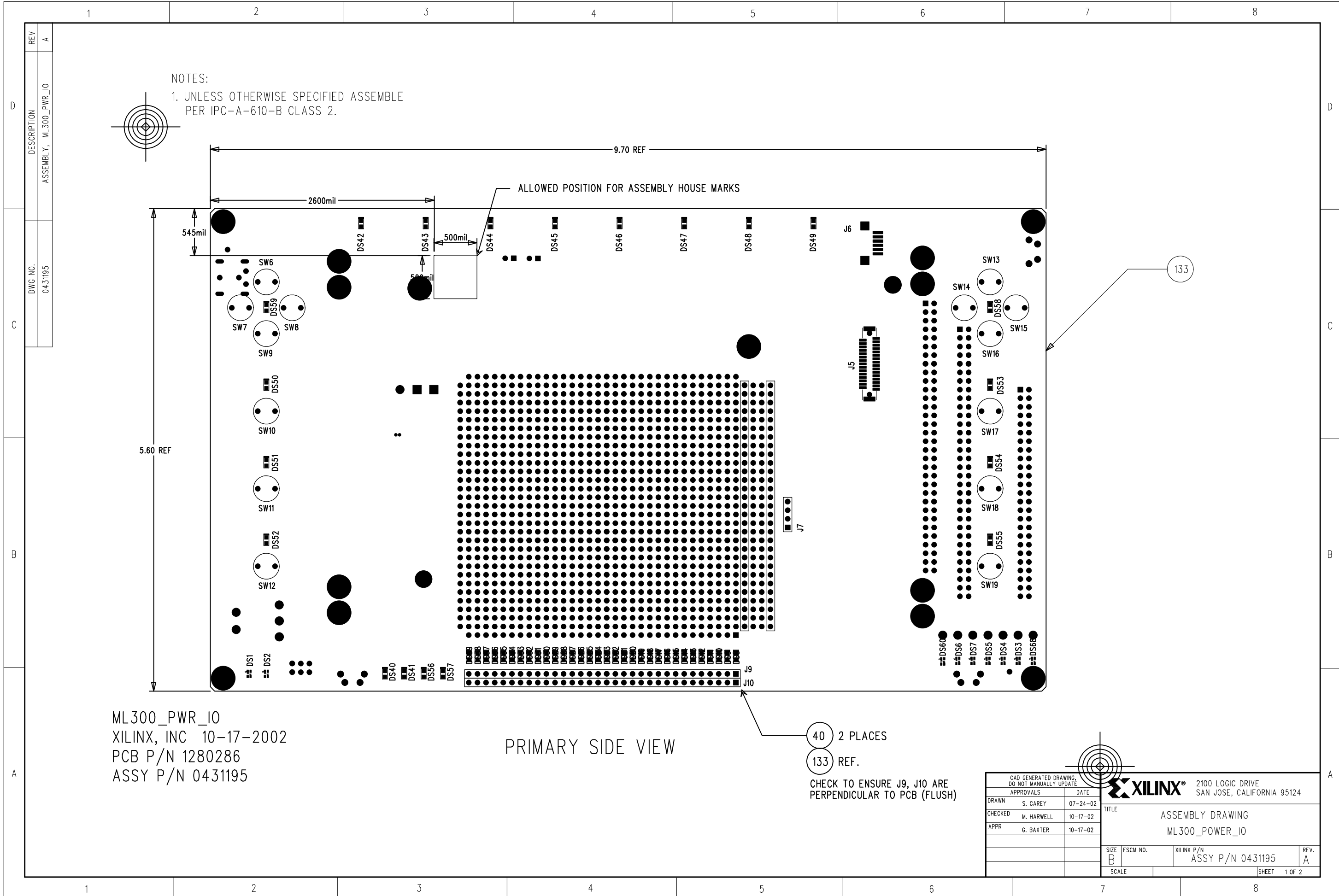


REV	A
DESCRIPTION	ASSEMBLY, ML300_PWR_IO
DWG NO.	0431195

ML300_PWR_IO
 XILINX, INC 10-17-2002
 PCB P\N 1580588
 ASSY P\N 0431195

2100 LOGIC DRIVE SAN JOSE, CALIFORNIA 95124			
TITLE			
ASSEMBLY DRAWING			
ML300_PWR_IO			
SIZE	FSCM NO.	DWG NO.	REV.
B			02
SCALE 1:1			SHEET 2 OF 2



NOTES:
1. UNLESS OTHERWISE SPECIFIED ASSEMBLE PER IPC-A-610-B CLASS 2.

ML300_PWR_IO
XILINX, INC 10-17-2002
PCB P/N 1280286
ASSY P/N 0431195

PRIMARY SIDE VIEW

40 2 PLACES
133 REF.

CHECK TO ENSURE J9, J10 ARE PERPENDICULAR TO PCB (FLUSH)

CAD GENERATED DRAWING. DO NOT MANUALLY UPDATE		XILINX® 2100 LOGIC DRIVE SAN JOSE, CALIFORNIA 95124	
APPROVALS	DATE	TITLE	
DRAWN S. CAREY	07-24-02	ASSEMBLY DRAWING ML300_POWER_IO	
CHECKED M. HARWELL	10-17-02	SIZE B	FSCM NO.
APPR G. BAXTER	10-17-02	XILINX P/N	REV. A
		ASSY P/N 0431195	
		SCALE	SHEET 1 OF 2

REV	A
DESCRIPTION	ASSEMBLY, ML300_PWR_IO
DWG NO.	0431195