

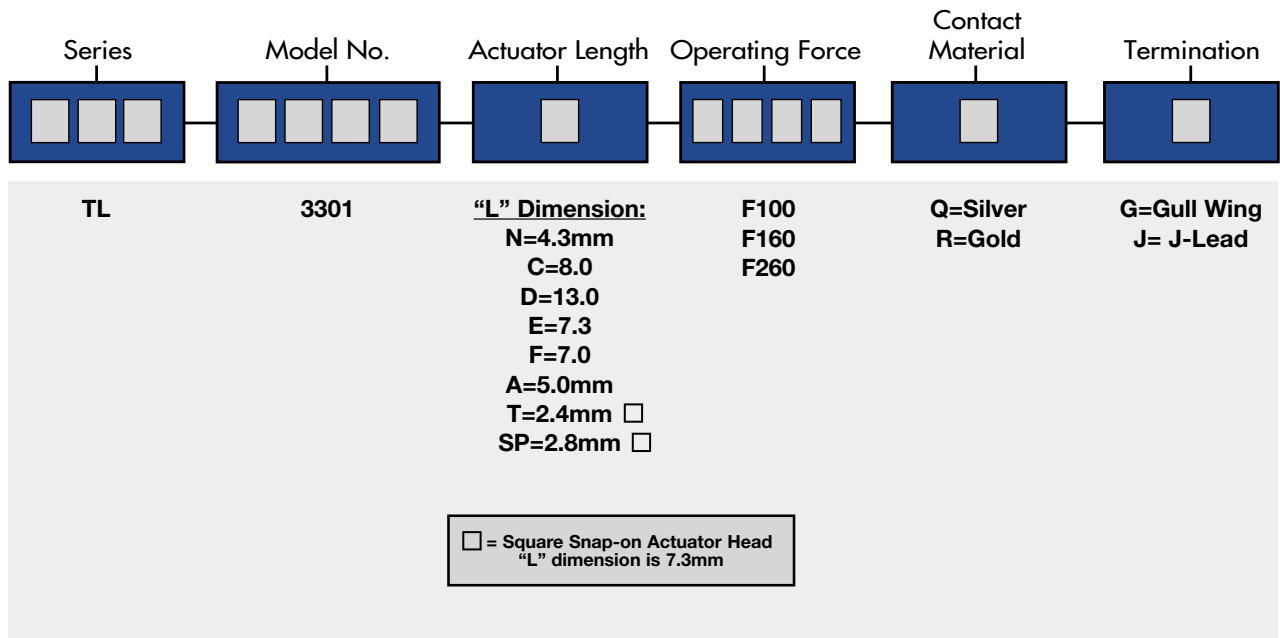
SPECIFICATIONS

Rating: 50mA @ 50 VDC
 Mechanical Life: 100,000 cycles typical
 Contact Resistance: 20mΩ max. initial @ 2-4 VDC
 100mA for both silver and gold plated contacts
 Insulation Resistance: 100MΩ min.
 Dielectric Strength: 1,000 Vrms at sea level
 Operating Force: 100 ± 50 gf, 160 ± 50 gf, 260 ± 50 gf

MATERIALS

Housing: Polyphenylene Sulfide (PPS) or 4/6 Nylon
 Actuator: Polyphenylene Sulfide (PPS) or 6/6 Nylon
 Bracket/Cover: Tin plated steel
 Contacts: Silver plated phosphor bronze
 Gold over nickel over phosphor bronze
 Terminals: Silver plated brass

HOW TO ORDER



EXAMPLE

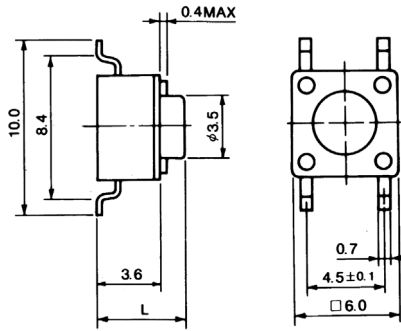
TL → 3301 → N → F160 → Q → J

SPECIFICATIONS SUBJECT TO CHANGE WITHOUT NOTICE.

SURFACE MOUNT TACT SWITCHES

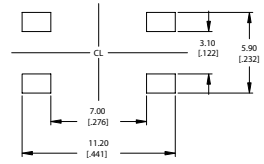


TL 3301
Gull Wing

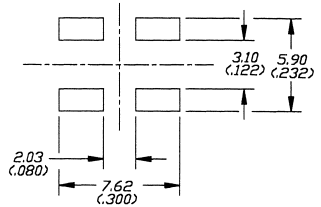


P.C. MOUNTING

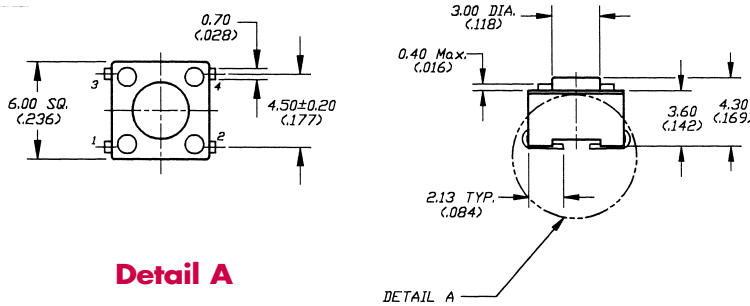
Gull Wing



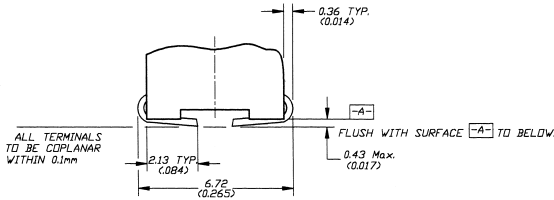
J-Lead



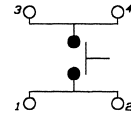
TL 3301
J-Lead



Detail A



Schematic



ACTUATOR OPTIONS

Actuator Length (L) in mm
N = 4.3mm
A = 5.0mm
C = 8.0mm
E = 7.3mm
F = 7.0mm

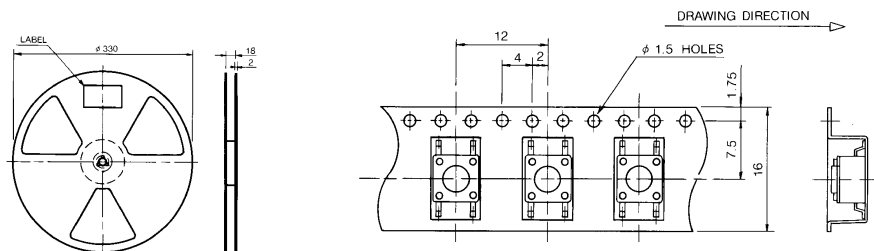
OPERATING FORCES

Operating Force
F100 = 100 ± 50gf
F160 = 160 ± 50gf
F260 = 260 ± 50gf

CONTACT MATERIAL

Contact Material
Q = Silver
R = Gold

TL 3301 STANDARD REEL



*Note: Contact E-Switch for additional packaging options.

SPECIFICATIONS SUBJECT TO CHANGE WITHOUT NOTICE.