

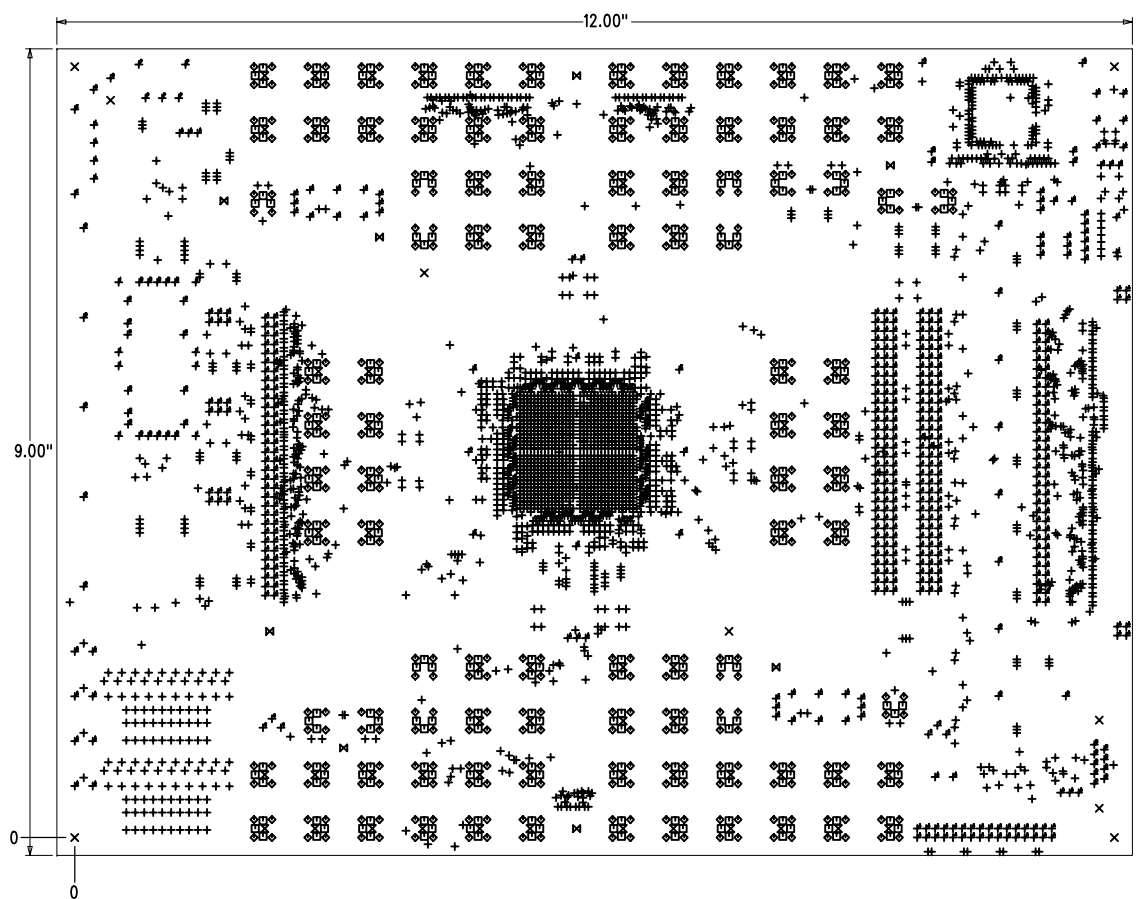
REV 01 THE INFORMATION IN THIS DRAWING IS THE SOLE PROPERTY OF THE XILINX CORPORATION. ANY REPRODUCTION IN PART OR WHOLE WITHOUT THE WRITTEN PERMISSION OF XILINX CORPORATION, IS PROHIBITED

REVISIONS			
REV	DESCRIPTION	DATE	APPROVED
01	INITIAL RELEASE	01-03-07	

DESCRIPTION  
PCB, ROHS COMPLIANT, ML423 FF1152

DWG NO.  
1280358

SIZE	QTY	SYM	PLATED	TOL
4.87	80	⊗	YES	+/-0.0
10	2727	+	YES	+/-0.0
11.81	160	⊕	YES	+/-0.0
15.75	288	⊖	YES	+/-0.0
31	6	⊗	YES	+/-0.0
37	449	⊕	YES	+/-0.0
39.37	2	⊕	YES	+/-0.0
45	19	⊕	YES	+/-0.0
52	2	⊕	NO	+/-0.0
55	10	⊕	YES	+/-0.0
59.84	4	⊕	YES	+/-0.0
62.99	384	⊖	YES	+/-0.0
65	8	⊕	YES	+/-0.0
67	2	⊕	NO	+/-0.0
73	5	⊕	YES	+/-0.0
87	2	⊕	NO	+/-0.0
90	6	⊕	YES	+/-0.0
90.55	2	⊕	YES	+/-0.0
95	8	⊗	YES	+/-0.0
100	2	⊕	NO	+/-0.0
105	2	⊕	YES	+/-0.0
125	9	⊗	YES	+/-0.0
250	14	⊕	YES	+/-0.0



COMPONENT VIEW

Layer	Type	Color	Dielectric	Copper Weight	Trace Width (MILS)	Trace Spacing (MILS)	Drill	Separation (MILS)	Drill	Comments
1	Top Side	L1_TOP.PAD	004*	1/2 OZ	7.00	1047-104	6.50	8.00	10047-104	COPPER-FIL
2	DRILL PLANE 1	L3_DRILL.PAD	004*	1.00						
3	INNER TRACE 1	L3_INNER.PAD	004*	1/2 OZ	6.35	1047-104	7.75	9.25	10047-104	CORE(4000-13)
4	DRILL PLANE 2	L4_DRILL.PAD	004*	1/2 OZ						PRE-PRG(4000-13)
5	INNER TRACE 2	L5_INNER.PAD	004*	1/2 OZ	5.50	1047-104	5.25	9.25	10047-104	CORE(4000-13)
6	DRILL PLANE 3	L6_DRILL.PAD	004*	1.00						CORE(4000-13)
7	TOP PLANE 1	L7_TOP.PAD	004*	1.00						PRE-PRG(4000-13)
8	INNER TRACE 3	L8_INNER.PAD	004*	1/2 OZ	6.00	1047-104				CORE(4000-13)
9	INNER TRACE 4	L9_INNER.PAD	004*	1/2 OZ	6.00	1047-104				PRE-PRG(4000-13)
10	TOP PLANE 2	L10_TOP.PAD	004*	1.00						CORE(4000-13)
11	DRILL PLANE 4	L11_DRILL.PAD	004*	1.00						PRE-PRG(4000-13)
12	INNER TRACE 5	L12_INNER.PAD	004*	1/2 OZ	6.00	1047-104	5.75	8.75	10047-104	PRE-PRG(4000-13)
13	DRILL PLANE 5	L13_DRILL.PAD	004*	1.00						CORE(4000-13)
14	INNER TRACE 6	L14_INNER.PAD	004*	1/2 OZ	7.00	1047-104	6.25	9.75	10047-104	PRE-PRG(4000-13)
15	DRILL PLANE 6	L15_DRILL.PAD	004*	1.00						PRE-PRG(4000-13)
16	BOTTOM SIDE	L16_BOTTOM.PAD	004*	1/2 OZ	7.00	1047-104	6.50	8.00	10047-104	COPPER-FIL

19. VENDOR MUST SUPPLY ROHS COMPLIANCY CERTIFICATION WITH BOARD.
  18. BOARD MUST BE ROHS COMPLIANT FOR Pb FREE ASSEMBLY.
  17. DIFFERENTIAL PAIRS IN TEST COUPON SHALL BE 3 INCHES LONG.
  16. BLIND VIA L1 TO L4 USE 4.87 MIL DRILL
  15. BLIND VIA L1 TO L4 USE 8 MIL DRILL
  14. PLATING : NICKEL/GOLD IMMERSION.
  13. IMPEDANCE TOLERANCE +/- 5%.
  12. ALL HOLES PLATED THROUGH, SIZES SPECIFIED ARE AFTER PLATING.
  11. HOLE TOLERANCE +/- .003, AFTER PLATING.
  10. REMOVE ALL SHARP EDGES AND BURRS.
  9. SOLDERMASK : LPI, COLOR=GREEN.
  8. RF - > 35-40ps EDGE RATE.
  7. MARK UL RECOGNIZED MANUFACTURER'S IDENTIFICATION LETTERS AND/OR SYMBOLS.
  6. USE ARTMASTER # 0531462
  5. BOARD THICKNESS = 0.110" +/- .010
  4. SILKSCREEN TOP AND BOTTOM; WHITE USING NON-CONDUCTIVE PAINT. (WARNOW CAT-L-INK PROCESS).
  3. MATERIAL = NELCO-4000-13 ASSUME ER 3.8
  2. FABRICATE IN ACCORDANCE WITH IPC-A-600F CLASS 2 LESS THAN 1.5% BOW AND TWIST. IPC-R-700 UL 796 AND UL 94 INDUSTRY STANDARD.
  1. BOARD IS SHOWN FROM COMPONENT SIDE.
- NOTES: UNLESS OTHERWISE SPECIFIED:

UNLESS OTHERWISE SPECIFIED ALL DIMENSIONS ARE IN INCHES TOLERANCES ARE: FRACTIONS .XX ± .02 DECIMALS .XXX ± .010 ANGLES ± 1°	CAD GENERATED DRAWING. DO NOT MANUALLY UPDATE		2100 LOGIC DRIVE SAN JOSE, CALIFORNIA 95124
	APPROVALS	DATE	
MATERIAL	CHECKED	DATE	TITLE
FINISH	RES ENG		PCB, ROHS COMPLIANT, ML423 FF1152
DO NOT SCALE DRAWING	QUAL ENG		SIZE D FSCM NO. DWG NO. 1280358 REV. 01
	APPROVED		SCALE 1 : 1 SHEET 1 OF 1