

Embedded Linux on MicroBlaze Board Flash Programming Guide

By default the demo application configures the SPI-Flash in quad mode, which makes the flash inaccessible from impact or PetaLinux. Before programming the board, please make sure **JP11 is closed**, so the default demo application is not loaded.

Board programming with Digilent Adept Tool (Windows Only):

Download and extract the *atlys-axi.mcs* file for Digilent Atlys board from the XUP's Embedded Linux on MicroBlaze workshop material's website.

Digilent provides a programming software call Adept. You will need to download the software and install it on the workstation that used to program the Atlys board. The following procedure describes how to program the SPI flash on Atlys board.

1. Download "Adept 2.8.1 System, 32/64-bit Windows" from <http://www.digilentinc.com/Products/Detail.cfm?NavPath=2,66,828&Prod=ADEPT2>.
Direct link: http://www.digilentinc.com/Data/Products/adept2/digilent.adept.system_v2.8.1.exe
2. Install "Adept 2.8.1 system"
3. Launch Adept and click on **Flash** tab
4. Click **Browse** and select the **atlys-axi.mcs** file
5. Select **Verify**
6. Click **Program** to start program the Atlys board

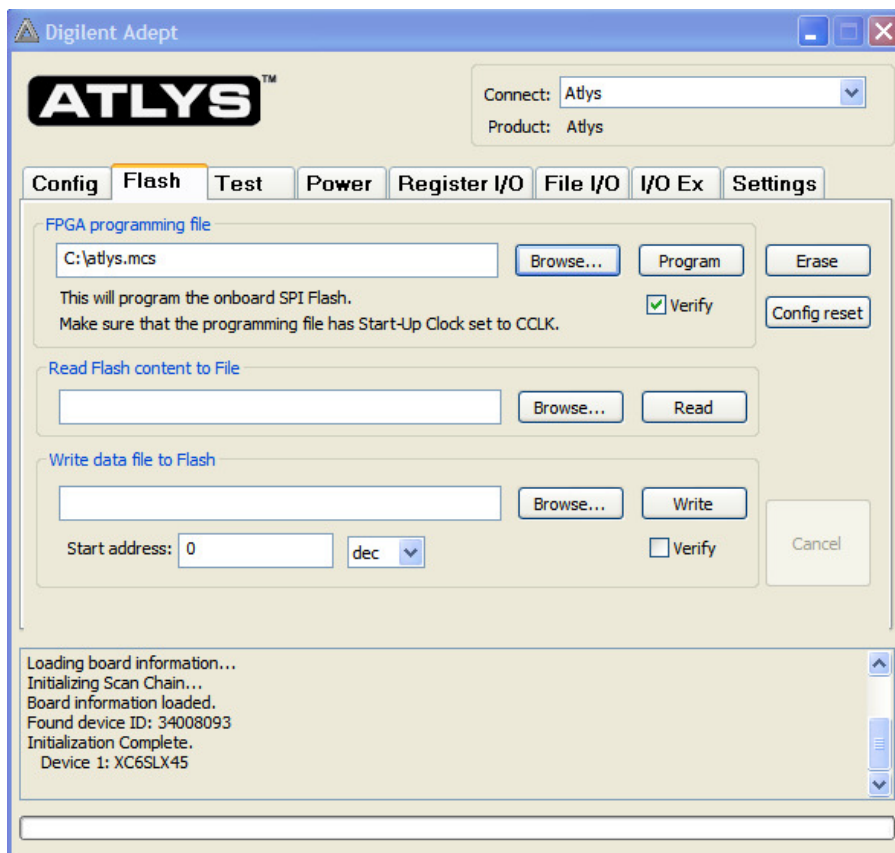


Figure 1. Adept setting for flash programming

7. Once the program is completed, **please remove JP11**, so the board loads bitstream from the SPI flash on power up.