

# **ISE 14.7 VM for Windows 10 User Guide**

## ***Installation, Licensing and Release Notes***

UG1227 (v14.7) February 18, 2020



## Revision History

The following table shows the revision history for this document.

| Section                                   | Revision Summary   |
|---|--|
| <b>02/18/2020 Version 14.7</b>            |  |
| Release version number and title updates. | Provides an overview of using the ISE 14.7 Virtual Machine for Windows 10. This User Guide now supports more than Spartan-6 specific VM information. |
| <b>12/07/2017 Version 1.0</b>             |  |
| Initial Xilinx release.                   | N/A  |

# Table of Contents

|   |    |
|---|----|
| Revision History .....                                      | 2  |
| <b>Chapter 1: Introduction</b>                              |    |
| <b>Chapter 2: Release Notes</b>                             |    |
| Supported Flows .....                                       | 5  |
| Known Issues .....  | 5  |
| <b>Chapter 3: Architecture Support and Requirements</b>     |    |
| Operating Systems .....                                     | 9  |
| System Requirements .....                                   | 9  |
| Architectures .....   | 10 |
| Compatible Third-Party Tools .....                          | 10 |
| <b>Chapter 4: Installation</b>                              |    |
| Installing the ISE Design Tools for Designs .....           | 11 |
| Configuring the Virtual Machine Time Zone .....             | 13 |
| Batch Mode Installation Flow .....                          | 15 |
| Uninstalling the ISE Design Suite Tools for Devices .....   | 16 |
| <b>Chapter 5: Licensing</b>                                 |    |
| Licensing Overview .....                                    | 17 |
| IP Licensing .....  | 17 |
| <b>Chapter 6: ISE Virtual Machine Configuration</b>         |    |
| ISE Virtual Machine Environment and its Customization ..... | 20 |
| <b>Appendix A: Additional Resources and Legal Notices</b>   |    |
| References .....  | 23 |
| Please Read: Important Legal Notices .....                  | 23 |

## Introduction

ISE® Virtual Machine (VM) for Windows 10 extends the ISE Design Suite 14.7 products for the latest Microsoft Windows offering. This solution is enabled for all Xilinx® ISE 14.7 devices. Xilinx devices are cost-optimized FPGAs, offering industry leading connectivity features such as high logic-to-pin ratios, small form-factor packaging, and a diverse number of supported I/O protocols. Built on 45 nanometer technology, the devices are ideally suited for a range of advanced bridging applications found in automotive infotainment, consumer, and industrial automation.

ISE VM for Windows 10 executes on a virtualized environment. The ISE tools execute on an Oracle Linux Virtual Machine.

# Release Notes

---

## Supported Flows

The majority of the standard flows supported with ISE® 14.7 tools are supported with this solution as well. Following are the list of exceptions.

- Design entry is supported via Project Navigator only. The PlanAhead™ tool as a design entry environment is not supported in this release.
  - Synplify, ModelSim and Mentor Graphics Questa Advanced Simulator integration are not supported.
  - SmartXplorer and System Generator are not supported.
  - All ISE 14.7 devices are supported.
- 

## Known Issues

### ISE VM is a Single-User Solution

The ISE VM installed can only be used by the user who installed it and cannot be shared with other users with access to the same Windows 10 host machine.

### The ISE Virtual Machine Does Not Have Internet Access Enabled by Default

You can give Internet access to the ISE VM by upgrading the networking configuration. See [Enabling Full Networking in Chapter 6](#) for details.

### Converting Windows Batch Script to Linux Bash Script

Because ISE runs in a Linux environment, existing Windows batch scripts must be converted to Linux bash syntax.

The syntax is similar and a simple batch file can be easily converted.

Here are a few key differences that will help you convert your existing scripts.

### ***Windows Batch Syntax vs Linux Bash Syntax***

Directory path separator \ /

Variable %VAR% \$VAR or \${VAR}

Executable name (typical) EXECNAME.exe EXECNAME

Comments REM #

For additional details, refer to the following document, which covers most commands:

<http://www.tldp.org/LDP/abs/html/dosbatch.html>

### ***Windows Batch Script Example***

Here is a simple example of a Windows batch script, designed to implement a simple project, and its equivalent in Linux bash.

```
REM variables

set PRJ_NAME=MYPROJECT

set DEVICEICE=xc6slx9-csg324-3

REM generate IP

coregen.exe -b "ipcore_dir\CORE_NAME.xcp" -p
"ipcore_dir\coregen.cgp"

REM Synthesis

xst.exe -ifn "%PRJ_NAME%.xst" -ofn "%PRJ_NAME%.syr"
```

REM Implementation

```
ngdbuild.exe -dd _ngo -sd ipcore_dir -nt timestamp -uc
"%PRJ_NAME%.ucf" -p %DEVICE% "%PRJ_NAME%.ngc" "%PRJ_NAME%.ngd"

map.exe -p %DEVICE% -w -logic_opt off -ol high -t 1 -xt 0
-register_duplication off -r 4 -mt off -ir off -pr off -lc off
-power off -o "%PRJ_NAME%_map.ncd" "%PRJ_NAME%.ngd" "%PRJ_NAME%.pcf"

par.exe -w -ol high -mt off "%PRJ_NAME%_map.ncd" "%PRJ_NAME%.ncd"
"%PRJ_NAME%.pcf"
```

REM bitstream generation

```
bitgen.exe -w "%PRJ_NAME%.ncd"
```

### ***Windows Bash Script Converted into a Linux Bash Script***

```
#!/bin/bash

# variables

PRJ_NAME=ROM_display

DEVICE=xc6slx9-csg324-3

# generate IP

coregen -b ipcore_dir/CORE.xcp -p ipcore_dir/coregen.cgp

# Synthesis

xst -ifn ${PRJ_NAME}.xst -ofn ${PRJ_NAME}.syr
```

```
# Implementation

ngdbuild -dd _ngo -sd ipcore_dir -nt timestamp -uc ${PRJ_NAME}.ucf -p
$DEVICE ${PRJ_NAME}.ngc ${PRJ_NAME}.ngd

map -p $DEVICE -w -logic_opt off -ol high -t 1 -xt 0
-register_duplication off -r 4 -mt off -ir off -pr off -lc off
-power off -o ${PRJ_NAME}_map.ncd ${PRJ_NAME}.ngd ${PRJ_NAME}.pcf

par -w -ol high -mt off ${PRJ_NAME}_map.ncd ${PRJ_NAME}.ncd
${PRJ_NAME}.pcf

# bitstream generation

bitgen -w ${PRJ_NAME}.ncd
```

## Additional Known Issues

Additional [known issues](#) are documented on the ISE VM for Windows 10 lounge web page.



# Architecture Support and Requirements

---

## Operating Systems

This solution supports Windows 10 Professional and Windows 10 Enterprise.

---

## System Requirements

Because this solution is enabled by virtualization, the processor of the Windows 10 machine must support virtualization technology.

This technology is called VT-x for Intel processors and AMD-V for AMD CPUs.

In addition to the CPU requirement, this virtualization technology also needs to be enabled in the BIOS setup. Note that in some cases this technology is not enabled by default and must be enabled by updating the BIOS settings.

Refer to your Windows 10 machine vendor documentation for instructions to access BIOS.

The ISE® Virtual Machine is deployed using Oracle VirtualBox hypervisor. Because only one hypervisor can be enabled on a system, you must disable/uninstall any other hypervisor, such as Microsoft Hyper-V, prior installation.

In order to run properly this solution has the following minimum hardware requirements:

- CPU: minimum of 2 cores
- RAM: 8 GB
- Disk Space: 85 GB

Xilinx recommends a minimum screen resolution of 1280 x 1024. Some GUI elements do not display properly at lower resolutions.

---

## Architectures

The solution supports all Xilinx devices. See the ISE supported devices product page [\[Ref 1\]](#).

---

## Compatible Third-Party Tools

All parts (ISE 14.7 VM for Win 10) do not provide support for any integrated third-party tools.

Xilinx supports importing of EDIF files generated using any supported version of SynplifyPro. This can be from Windows 10 or any RHEL Linux environment. In ISE, the project setting is **Design Property > Top-Level Source type = EDIF**.

# Installation

---

## Installing the ISE Design Tools for Designs

This chapter explains the installation process for ISE® 14.7 tools for devices on Windows 10.

### Installation Preparation

Before starting installation the follow steps must be completed.

1. Make sure your system meets the requirements described in [Chapter 3, Architecture Support and Requirements](#).
2. Disable anti-virus software to reduce installation time
3. To install the ISE Virtual Machine First you will need to install the Oracle VM.

### Installation Steps

Decompress the downloaded installation zip file, and run **xsetup.exe** to launch the installation.

**Note:** Oracle VirtualBox needs to be installed prior to the ISE VM installation.

### Oracle VirtualBox Installation

The version of Oracle VirtualBox officially supported by Xilinx is 5.2.34. See the [Oracle Documentation](#) to install Virtualbox and for more information.

### License Agreements

Carefully read the license agreements before continuing with the installation. If you do not agree to the term and conditions, cancel the installation and contact Xilinx.

## Installation Options

Unlike in a typical ISE 14.7 tools installation process, you are not provided with any options to select from.

This is mostly the case because options have already customized for this solution.

- ISE Design Suite System Edition is installed. All devices are supported.
- ISE tools for all devices are already licensed.
- Cable drivers are already pre-installed.

## Shortcuts

You can customize the creation of desktop and program group shortcuts. Xilinx highly recommends installing shortcuts; these shortcuts greatly facilitate the access to ISE tools from the Windows 10 machine. By default ISE tools shortcuts are provided on the Virtual Machine.

## Shared Folder

In order to facilitate the sharing of files between the Windows 10 host machine and the Virtual Machine running ISE tools, you are provided with an installation option to specify a shared folder. See the Oracle VirtualBox documentation. [4.3 Shared folders \[Ref 3\]](#).

---

**IMPORTANT:** *Keep all user data files, such as project source files, in the shared folder. That allows them to be accessible from both operating systems and will not be lost if ISE is uninstalled.*

---

The directory that you specify will be available on the virtual machine under `/home/ise/<shared folder name>`.

For instance, if you specify the Windows 10 host directory `c:\xilinx_projects\test_design` or `all_ise_designs` at installation time, its content will be accessible on the ISE Virtual Machine under `/home/ise/test_design` or `all_ise_designs`.

The installation process only allows you to specify one shared folder, but it is possible to configure additional shared folders post installation. See [Chapter 6, ISE Virtual Machine Configuration](#) for more details.

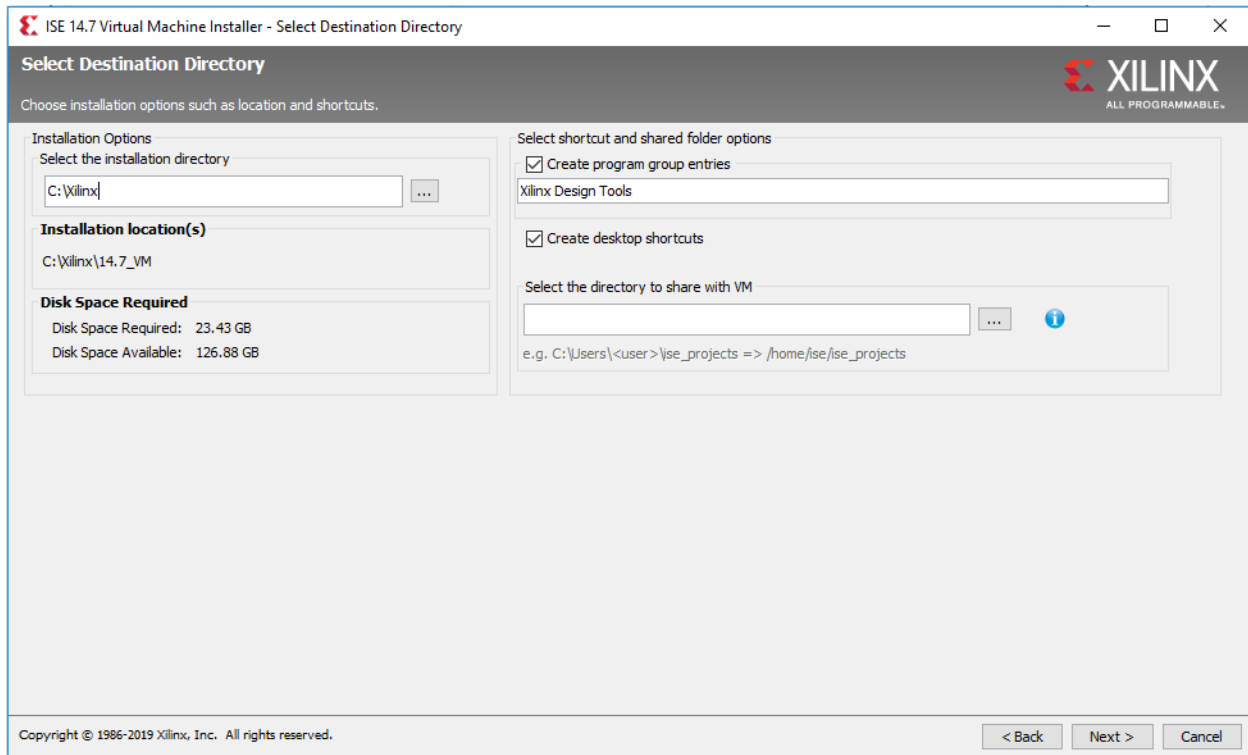


Figure 4-1: Installer Select Destination Directory Window

## Configuring the Virtual Machine Time Zone

After the installation is complete, most users will need to manually update the Virtual Machine time zone. The time of the Virtual machine is automatically synchronized with the Windows 10 host machine, but the time zone must be initialized manually.

By default, the ISE Virtual Machine time zone is set to UTC. Users outside of the UTC time must follow the steps below to update the time zone:

1. Start the ISE Virtual Machine using the ISE Project Navigator desktop shortcut.
2. Right-click the Virtual Machine desktop and select **Open in Terminal** to open a new terminal window.
3. In the terminal window type the following command to launch the Linux utility tool to adjust the time:

```
sudo system-config-date
```

The Date/Time Properties dialog box opens.

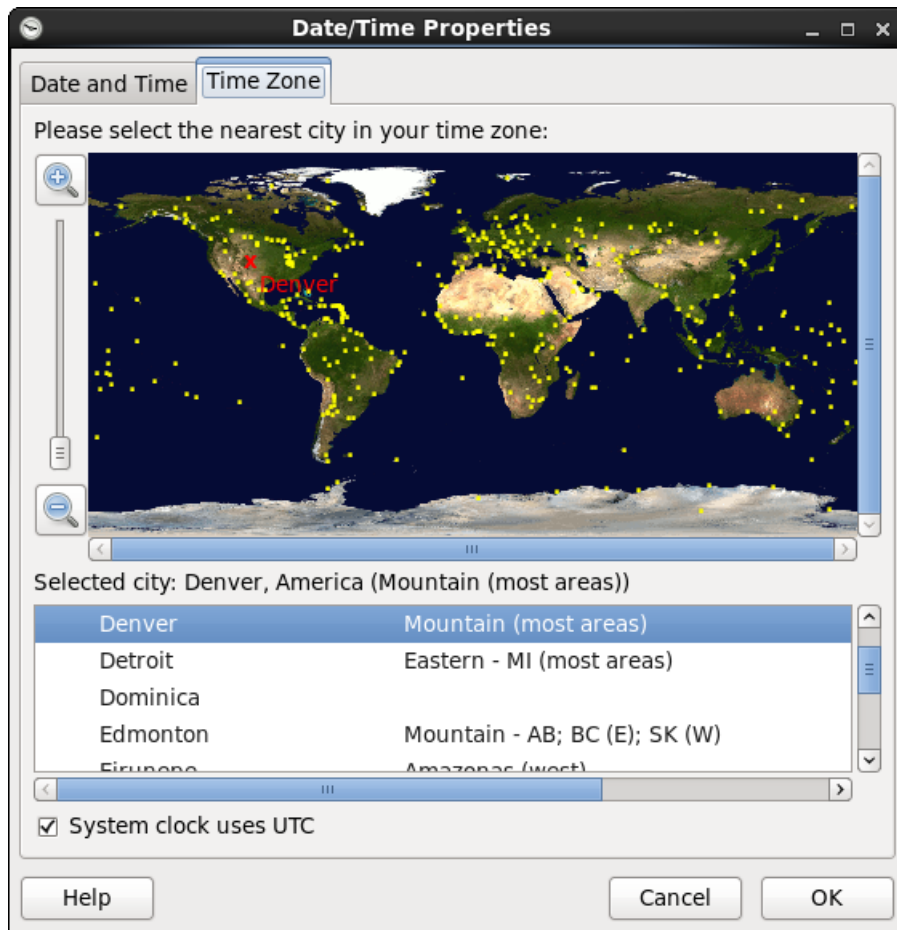


Figure 4-2: Date/Time Properties Dialog Box

4. In the utility time tool, click the **Time Zone** tab, select your local time zone, and click **OK**.

## Batch Mode Installation Flow

The installer can be run as an unattended batch process. To run unattended, a configuration file must be present that tells the installation location and options you wish to install.

The installer has a mode in which it can generate a reference option file for you based on common configurations, which you can further edit to customize your installation.

To begin, open a command prompt as administrator and change the working directory to the bin directory of the unzipped installer.

### Generate Configuration File

1. Run **xsetup.bat -b ConfigGen**  
After selecting the edition you want to install, the default configuration file is generated.
2. Edit the file to specify the installation location and the path of the Shared Folder and any other installation option you wish to customize. See Oracle VirtualBox documentation, *4.3 Shared folders* [Ref 3] for details.

### Run the installer

Now that you have edited your configuration file to reflect your installation preferences, you are ready to run the installer. As part of the installer command line, you will need to indicate your acceptance of the Xilinx and Third Party license agreements.

### Xilinx End-User license Agreement (EULA)

See the [Xilinx End-User License Agreement \(EULA\)](#) document on the ISE VM for Windows 10 lounge web page.

### Third Party End-User License Agreement (EULA)

See the [Third Party End-User License Agreement \(EULA\)](#) document on the ISE VM for Windows 10 lounge web page.

### Example Command Line

This is an example of the command line for a typical new installation using a configuration file.

```
xsetup.bat -- agree XilinxEULA,3rdPartyEULA --batch Install --config  
install_config.txt
```

For the full list of the installer batch options run **xsetup.bat --help**

---

## Uninstalling the ISE Design Suite Tools for Devices



**CAUTION!** *Before uninstalling, make sure to move all important files located on the Linux guest Virtual Machine you want to keep on the Windows 10 host. You might also want to make sure that you do not have any important files under the ISE VM installation directory (typically under C:\Xilinx\14.7\_VM).*

---

To uninstall, launch the uninstaller from the **Control Panel >Uninstall a program** or from the **Add or remove programs** application.

The uninstall process will uninstall the ISE Virtual Machine only.

**Note:** Virtualbox must be uninstalled manually.



# Licensing

---

## Licensing Overview

The ISE® Virtual Machine solution is installed licensed; it is ready to use as is.

---

## IP Licensing

### Pointing to IP Licenses Available on the License Server

In case your design is using an IP that is licensed and that IP license is hosted on a license server, perform the following instructions to make that license accessible to ISE tools on the Virtual Machine.

Because the default ISE Virtual Machine network configuration limits it to have access only to the Windows 10 host, its network configuration must be updated. Enable external networking as detailed in [Enabling Full Networking in Chapter 6](#).

After the ISE VM has full networking enabled, you need to point the ISE tools to your existing IP license server.

1. Open a terminal window on the ISE VM guest, **Applications > System Tools > Terminal**.
2. Type the following:

```
export LM_LICENSE_FILE= <port>@<license server>
```

For example **export LM\_LICENSE\_FILE=2100@pikachu**.

3. Verify that the IP licenses are accessible to ISE tools by launching Project Navigator from the same terminal by typing **ise** and go to **help->Manage Licenses**.

## Deploying/Using new IP license

Deploying a new IP license requires attaining a floating license that will be hosted on the Windows 10 host computer.

1. To attain the hostid of the Windows 10 computer, open a Windows Command Prompt and navigate to the `tps\FlexLM` directory of the install. By default this is `C:\Xilinx\14.7_VM\tps\FlexLM`.
2. Issue the following command: **lmutil lmhostid**. This command generates at least one hostid, multiple ones are separated by spaces, to use when requesting a floating license for the paid IP. Additionally run **lmutil lmhostid -hostname** to get the hostname of the Windows 10 host computer used when generating the license.
3. After all information has been collected, request a floating license from Xilinx.
4. After the IP license is acquired from Xilinx, put the file somewhere on the Windows 10 host computer file system. Then, open a new Command Prompt and again navigate to the `tps\FlexLM` directory of the install and launch **lmgrd -c <license file location> -z**.



**IMPORTANT:** The `lmgrd` command must be active. Rather than closing the command window, you can minimize it.

5. To connect the Virtual Machine to the `lmgrd` instance running on the Windows 10 host, the IP address of the VirtualBox Host-Only Network must be known. To determine this run **ipconfig** from a Windows Command Prompt, and look for the Ethernet adapter VirtualBox Host-Only Network entry. Use the IPv4 Address to access the license. For example:

```
Ethernet adapter VirtualBox Host-Only Network:
Connection-specific DNS Suffix . . . . . :
Link-local IPv6 Address . . . . . : fe80::7063:d9ad:d6b9:a7e9%30
IPv4 Address. . . . . : 192.168.56.1
Subnet Mask . . . . . : 255.255.255.0
Default Gateway . . . . . :
```

Figure 5-1: IPv4 Address

6. In the ISE Virtual Machine open a Linux terminal window, **Applications->System Tools->Terminal**, in the window type:
 

```
export XILINXD_LICENSE_FILE=2100@192.168.56.1
```
7. To verify that the IP license is available to ISE tools, open Project Navigator and go to **Help->Manage Licenses** to determine if the license is available.
8. If the license is not available, close Project Navigator. In a Windows 10 command window, change the directory to `c:\Xilinx\14.7_VM\tps\FlexLM` and type:

```
lmutil lmstat -a -c 2100@192.168.56.1
```

or the appropriate IP address listed in [Figure 5-1](#) to see if the license is being served by the server. If it is not, there might be a problem with the firewall on the host. One way to circumvent this is to open the license file in a text editor and where the hostname is given as the SERVER, change that to the IP address, save the file, and relaunch **lmgrd**.

# ISE Virtual Machine Configuration

---

## ISE Virtual Machine Environment and its Customization

### ISE Virtual Machine Default Configuration

The ISE® tools run on an Oracle Linux 6.4 Virtual Machine (VM) and that Virtual Machine is deployed on the Windows 10 host machine using Oracle VirtualBox hypervisor.

The ISE Virtual Machine is deployed by default with the following configuration

- OS: Oracle Linux 6.4 64 bit
- Processor: 1 CPU
- Base Memory: 6144 MB
- Internal Disk Space: 64 GB

This configuration should be considered as the minimum configuration but is sufficient for all ISE devices development. You can change post-installation based on your needs and the capability of your Windows 10 host machine. See Oracle VirtualBox documentation, *Chapter 3 Configuring virtual machines* [Ref 6] for details.

### Enabling Full Networking

The virtual machine ships with Host-only-Networking mode enabled by default. This means that the ISE Virtual Machine does not have Internet access and can only access the Windows 10 host machine. If full access is needed, perform the following instructions.

Xilinx recommends using NAT networking, followed by bridged. However, some network adapters and most wireless cards do not support bridged networking.

To enable NAT networking follow these simple steps.

1. Close the ISE VM if it is open.
2. On the Windows 10 host, open Oracle VM VirtualBox from the Start Menu.
3. Click **Settings > Network**.
4. Select **NAT** from the drop-down options under **Attached to:** and click **OK**.
5. Restart the ISE VM.

For full instructions and more information see the Oracle VirtualBox documentation, *Chapter 6. Virtual networking* [Ref 4].

## ISE Virtual Machine Login and Permissions

The ISE Virtual Machine is setup to automatically log in as user **ise**, password **xilinx**.

You may need root access for some actions in the ISE Virtual Machine, in most cases you can use **sudo** which does not require a password. For instance, type the following command in a command shell to create a directory as root.

```
%sudo mkdir /opt/mydir
```

## Accessing Additional Shared Folders and Network Storage on an ISE Virtual Machine

To mount more than one shared folder into the VM after installation, you must follow the instructions in Oracle VirtualBox documentation, *4.3 Shared folders* [Ref 3].

Note that the mountpoint referred to in the instructions must be created on the virtual guest prior to mounting. For example, if you have shared the `C:\projects` folder with the shared name of "projects" using the preceding instructions, you need to open a terminal window in the Virtual Machine from **Applications > System Tools > Terminal** and create a directory with the following command: **mkdir -p /home/ise/projects**. Then the mount command is **sudo mount -t vboxsf projects projects**.

## USB Pass-Through for Unrecognized Programming Cables

The virtual machine contains out-of-the-box support for the Xilinx® and Digilent programming cables. If further support is needed, you need to pass through the USB cable to the guest to make it available to the Impact and ChipScope™ tools.

To configure the machine to capture USB devices while the machine is not running you can follow the instructions in the Oracle VirtualBox documentation, *3.10. USB support* [Ref 5]. If the machine is running, the previous instructions will work, or you can use the menu in the status bar of the VM to attach USB devices through to the guest.

Right-click the USB icon located in the of the VirtualBox window in [Figure 6-1](#).



Figure 6-1: USB Icon

Then click the device you would like the guest to have access to. This operation will transfer the device to the Virtual Machine. Keep in mind that the guest will need drivers for the device in some cases. Please follow the cable manufacturer's instructions for installing the Linux drivers.

# Additional Resources and Legal Notices

---

## References

1. ISE Product Page:  
<https://www.xilinx.com/support/download/index.html/content/xilinx/en/downloadNav/vivado-design-tools/archive-ise.html>
  2. Oracle VirtualBox documentation: [4.2.2. Guest Additions for Linux](#)
  3. Oracle VirtualBox documentation: [4.3 Shared folders](#)
  4. Oracle VirtualBox documentation: [Chapter 6. Virtual networking](#)
  5. Oracle VirtualBox documentation: [3.10. USB support](#)
  6. Oracle VirtualBox documentation: [Chapter 3 Configuring virtual machines](#)
- 

## Please Read: Important Legal Notices

The information disclosed to you hereunder (the "Materials") is provided solely for the selection and use of Xilinx products. To the maximum extent permitted by applicable law: (1) Materials are made available "AS IS" and with all faults, Xilinx hereby DISCLAIMS ALL WARRANTIES AND CONDITIONS, EXPRESS, IMPLIED, OR STATUTORY, INCLUDING BUT NOT LIMITED TO WARRANTIES OF MERCHANTABILITY, NON-INFRINGEMENT, OR FITNESS FOR ANY PARTICULAR PURPOSE; and (2) Xilinx shall not be liable (whether in contract or tort, including negligence, or under any other theory of liability) for any loss or damage of any kind or nature related to, arising under, or in connection with, the Materials (including your use of the Materials), including for any direct, indirect, special, incidental, or consequential loss or damage (including loss of data, profits, goodwill, or any type of loss or damage suffered as a result of any action brought by a third party) even if such damage or loss was reasonably foreseeable or Xilinx had been advised of the possibility of the same. Xilinx assumes no obligation to correct any errors contained in the Materials or to notify you of updates to the Materials or to product specifications. You may not reproduce, modify, distribute, or publicly display the Materials without prior written consent. Certain products are subject to the terms and conditions of Xilinx's limited warranty, please refer to Xilinx's Terms of Sale which can be viewed at <http://www.xilinx.com/legal.htm#tos>; IP cores may be subject to warranty and support terms contained in a license issued to you by Xilinx. Xilinx products are not designed or intended to be fail-safe or for use in any application requiring fail-safe performance; you assume sole risk and liability for use of Xilinx products in such critical applications, please refer to Xilinx's Terms of Sale which can be viewed at <http://www.xilinx.com/legal.htm#tos>.

### **AUTOMOTIVE APPLICATIONS DISCLAIMER**

AUTOMOTIVE PRODUCTS (IDENTIFIED AS "XA" IN THE PART NUMBER) ARE NOT WARRANTED FOR USE IN THE DEPLOYMENT OF AIRBAGS OR FOR USE IN APPLICATIONS THAT AFFECT CONTROL OF A VEHICLE ("SAFETY APPLICATION") UNLESS THERE IS A SAFETY CONCEPT OR REDUNDANCY FEATURE CONSISTENT WITH THE ISO 26262 AUTOMOTIVE SAFETY STANDARD ("SAFETY DESIGN"). CUSTOMER SHALL, PRIOR TO USING OR DISTRIBUTING ANY SYSTEMS THAT INCORPORATE PRODUCTS, THOROUGHLY TEST SUCH SYSTEMS FOR SAFETY PURPOSES. USE OF PRODUCTS IN A SAFETY APPLICATION WITHOUT A SAFETY DESIGN IS FULLY AT THE RISK OF CUSTOMER, SUBJECT ONLY TO APPLICABLE LAWS AND REGULATIONS GOVERNING LIMITATIONS ON PRODUCT LIABILITY.

© Copyright 2017–2020 Xilinx, Inc. Xilinx, the Xilinx logo, Artix, ISE, Kintex, Spartan, Virtex, Vivado, Zynq, and other designated brands included herein are trademarks of Xilinx in the United States and other countries. All other trademarks are the property of their respective owners.