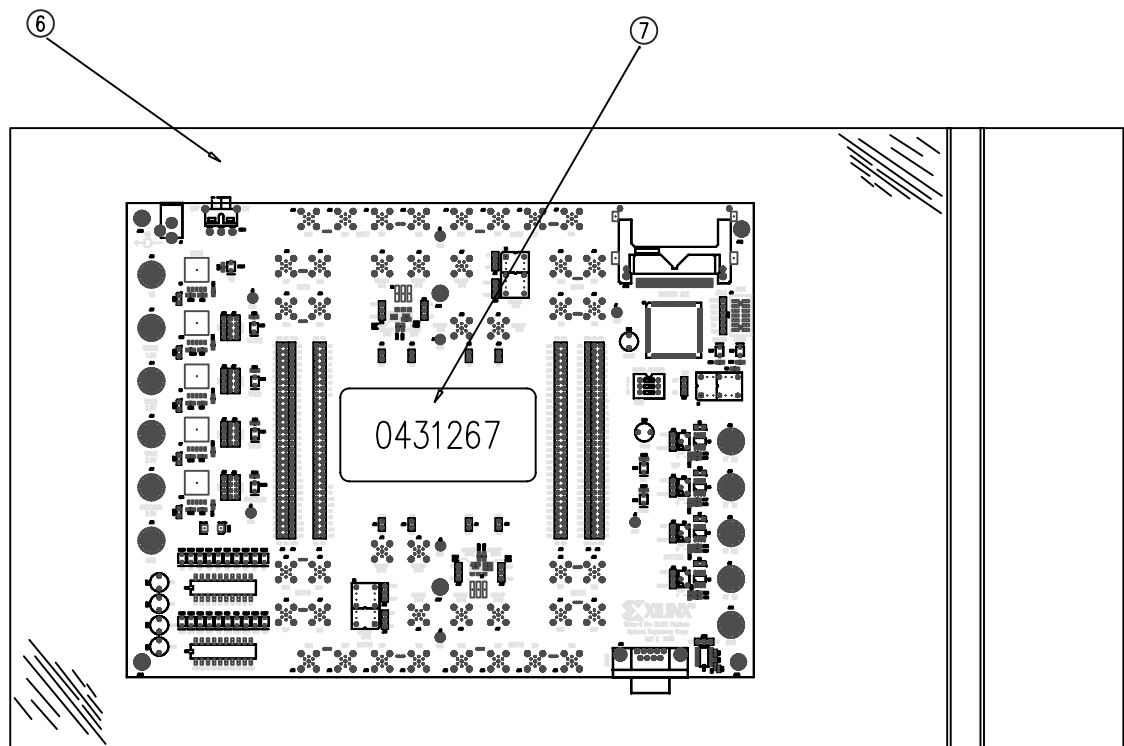


TOP VIEW



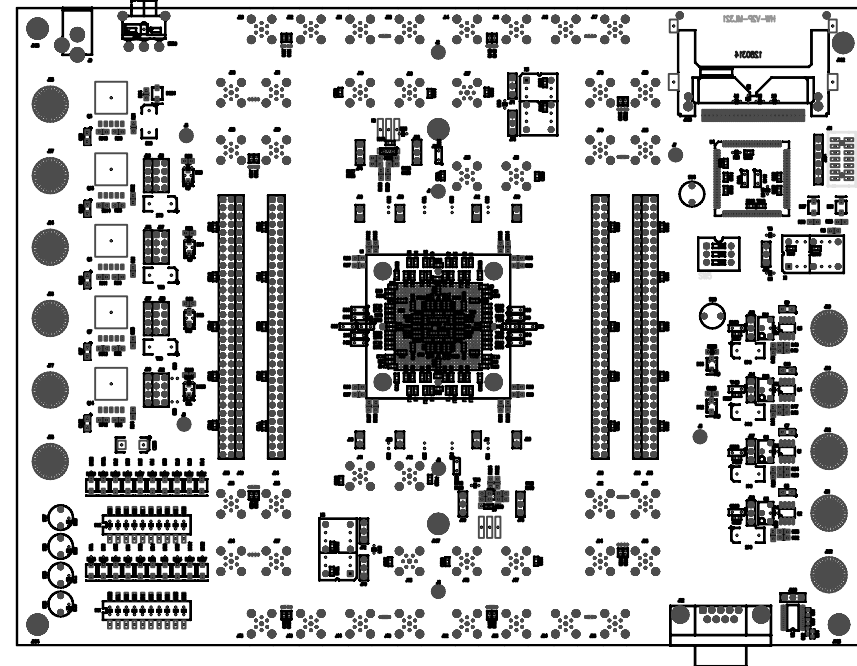
DETAIL A

ASSEMBLY INSTRUCTIONS:

1. Insert Shunts where shown (30 places).
2. Assemble Screw and Nut where shown (#4-40, Nuts located on bottom side).
3. Insert Power Jacks as shown.
4. Assemble Screw, Bumper and Nut as shown.
5. Prior to testing, insert oscillators where shown (X1=30MHz (P/N 2200051), X5=50MHz (P/N 2200017)). Refer to Test Procedure TSS0076. After testing board, remove oscillator from X3 location only. Leave X1 and X5 installed for shipment.
6. Place assembled PCBA in Anti-static plastic bag (0330057) along with bagged oscillators from note 5, and seal.
7. Place a label with PCBA part number on outside of bagged assembly, as shown in Detail A.

NOTE: Label is white with black lettering.

REV	REVISION	DESCRIPTION	DATE	DRAWN	APPVD	DATE
01	INITIAL RELEASE	PER DCN 0101789	03/04/04	S. LAMM		
02	REMOVED RES	DCN 0101829	3/8/04	NYGREN		
03	REVISED	PER DCN 0102027	9/14/04	S. LAMM		



BOTTOM VIEW

CONFIDENTIAL
This document is the property of Xilinx Incorporated and contains information which is confidential and proprietary to Xilinx. No part of this document may be copied, reproduced or disclosed to third parties without the prior written consent of Xilinx Incorporated.



TITLE ASSY, ML321 V2 PRO
FF672 MGT CHAR

DRAWN BY S. LAMM DATE 03/04/04

PROJECT:

CHECKED BY DATE

SIZE DRAWING NUMBER REV.

ENG APPROVAL DATE

B 0431267 03

MFG APPROVAL DATE

SCALE NTS SHEET 1 OF 1

FSCM 68994

TOLERANCES			
\angle	.X	.XX	.XXX
$\pm .5^\circ$	$\pm .1$	$\pm .01$	$\pm .005$
Unless otherwise specified, dimensions are in inches.			