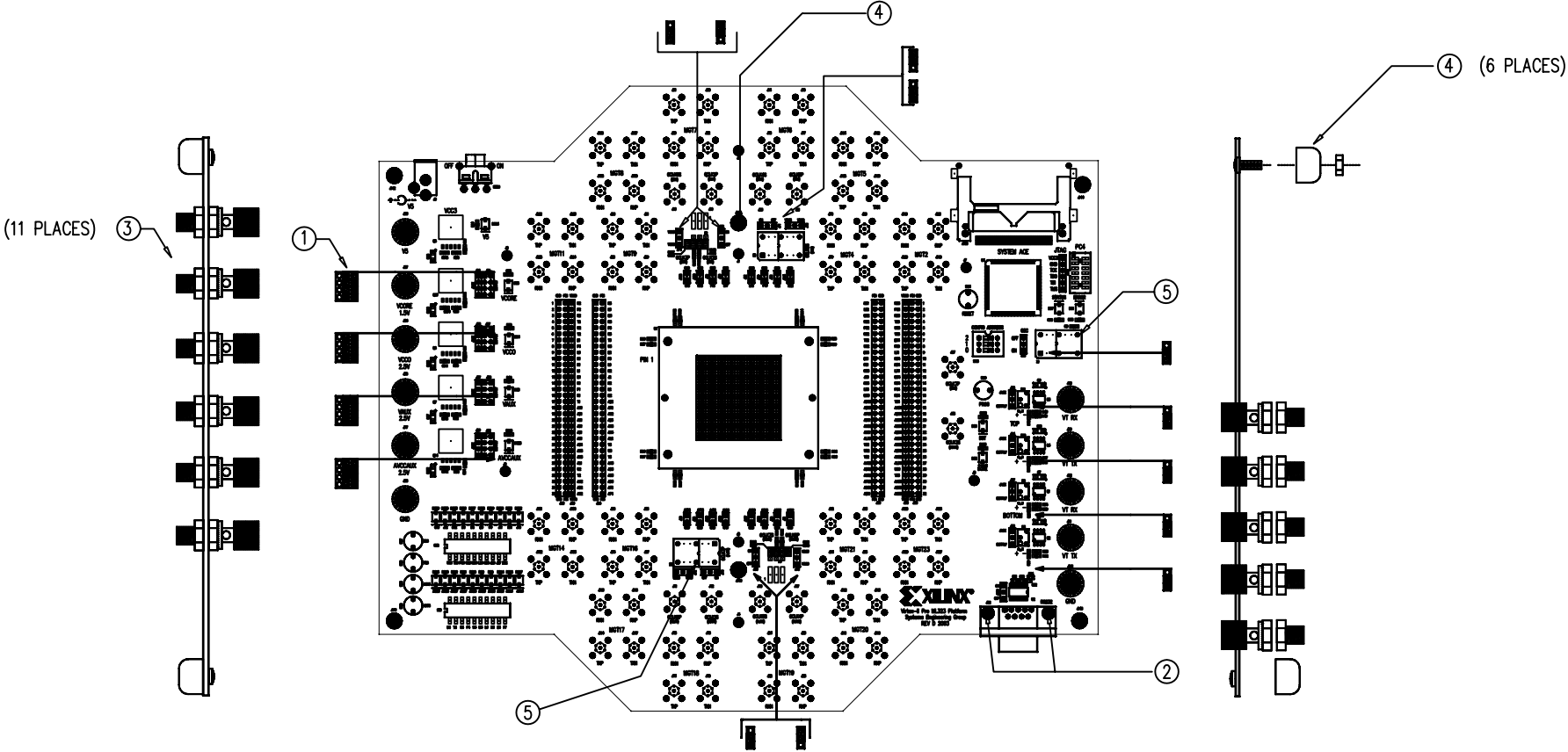
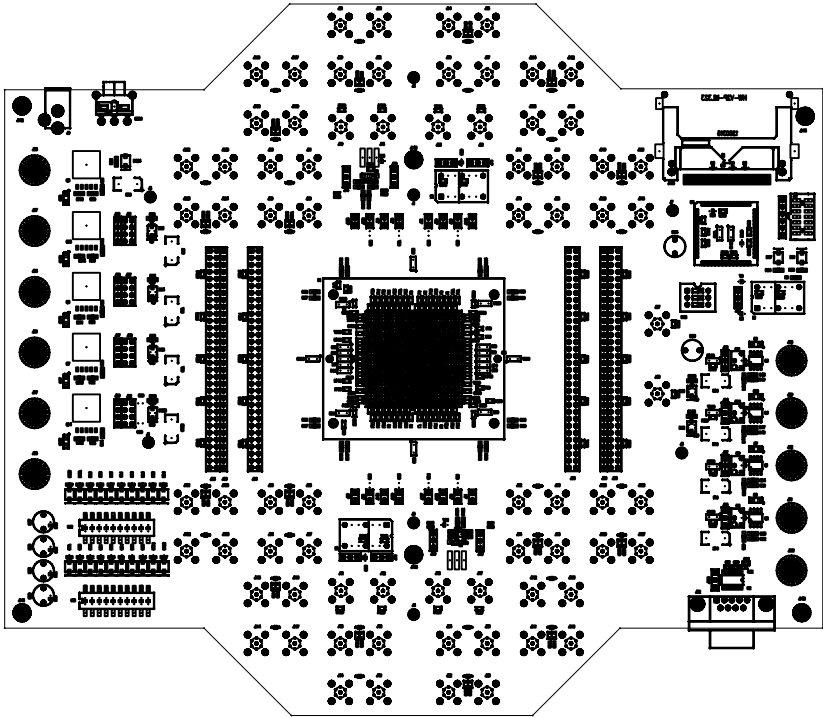


REV	REVISION DESCRIPTION	DATE	DRAWN	APPVD	DATE
01	INITIAL RELEASE PER DCN 0101814	03/22/04	S. LAMM		
02	REMOVED RES DCN 0101829	4/8/04	NYGREN		
03	REVISED PER DCN 0102027	9/15/04	S. LAMM		



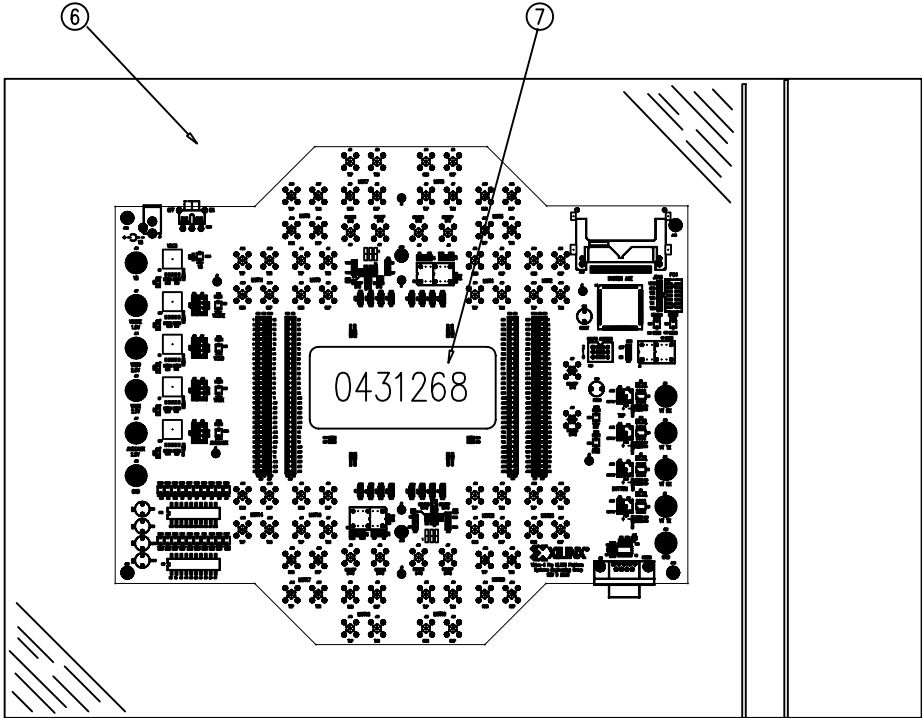
TOP VIEW



BOTTOM VIEW

ASSEMBLY INSTRUCTIONS:

1. Insert Shunts where shown (30 places).
 2. Assemble Screw and Nut where shown (#4-40, Nuts located on bottom side).
 3. Insert Power Jacks as shown.
 4. Assemble Screw, Bumper and Nut as shown.
 5. Prior to testing, insert oscillators where shown (X1=30MHz (P/N 2200051), X5=50MHz (P/N 2200017)). Refer to Test Procedure TSS0076. After testing board, remove oscillator from X3 location only. Leave X1 and X5 installed for shipment.
 6. Place assembled PCBA in Anti-static plastic bag and seal.
 7. Place a label with PCBA part number on outside of bagged assembly, as shown in Detail A.
- NOTE: Label is white with black lettering.



DETAIL A

CONFIDENTIAL
This document is the property of Xilinx Incorporated and contains information which is confidential and proprietary to Xilinx. No part of this document may be copied, reproduced or disclosed to third parties without the prior written consent of Xilinx Incorporated.



TITLE ASSY, ML323 V2 PRO
FF1152 MGT CHAR

DRAWN BY S. LAMM	DATE 03/22/04
CHECKED BY	DATE
ENG APPROVAL	DATE
MFG APPROVAL	DATE
FSCM 68994	

PROJECT:	SIZE	DRAWING NUMBER	REV.
B		0431268	03
SCALE NTS	SHEET 1	OF 1	