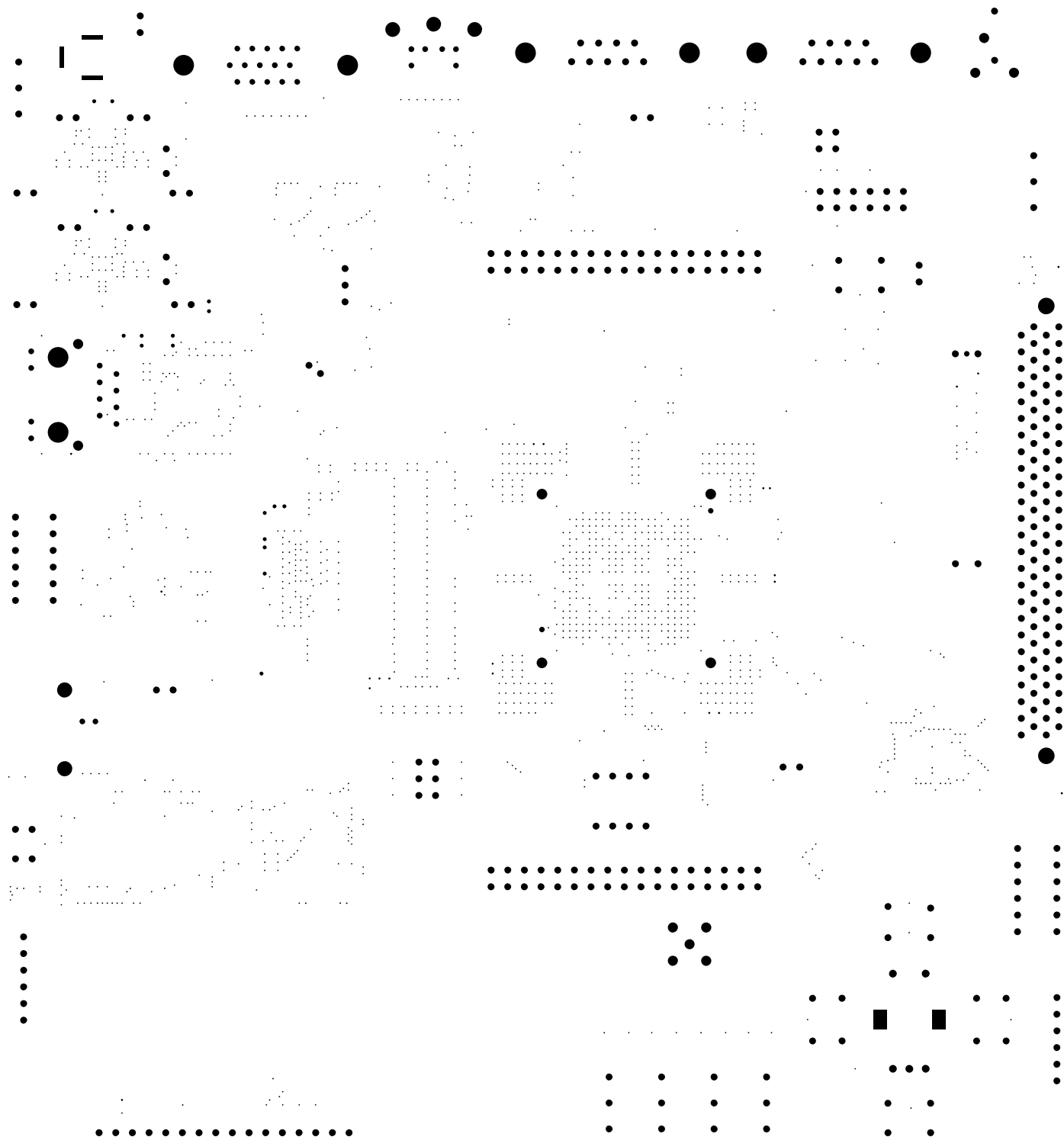
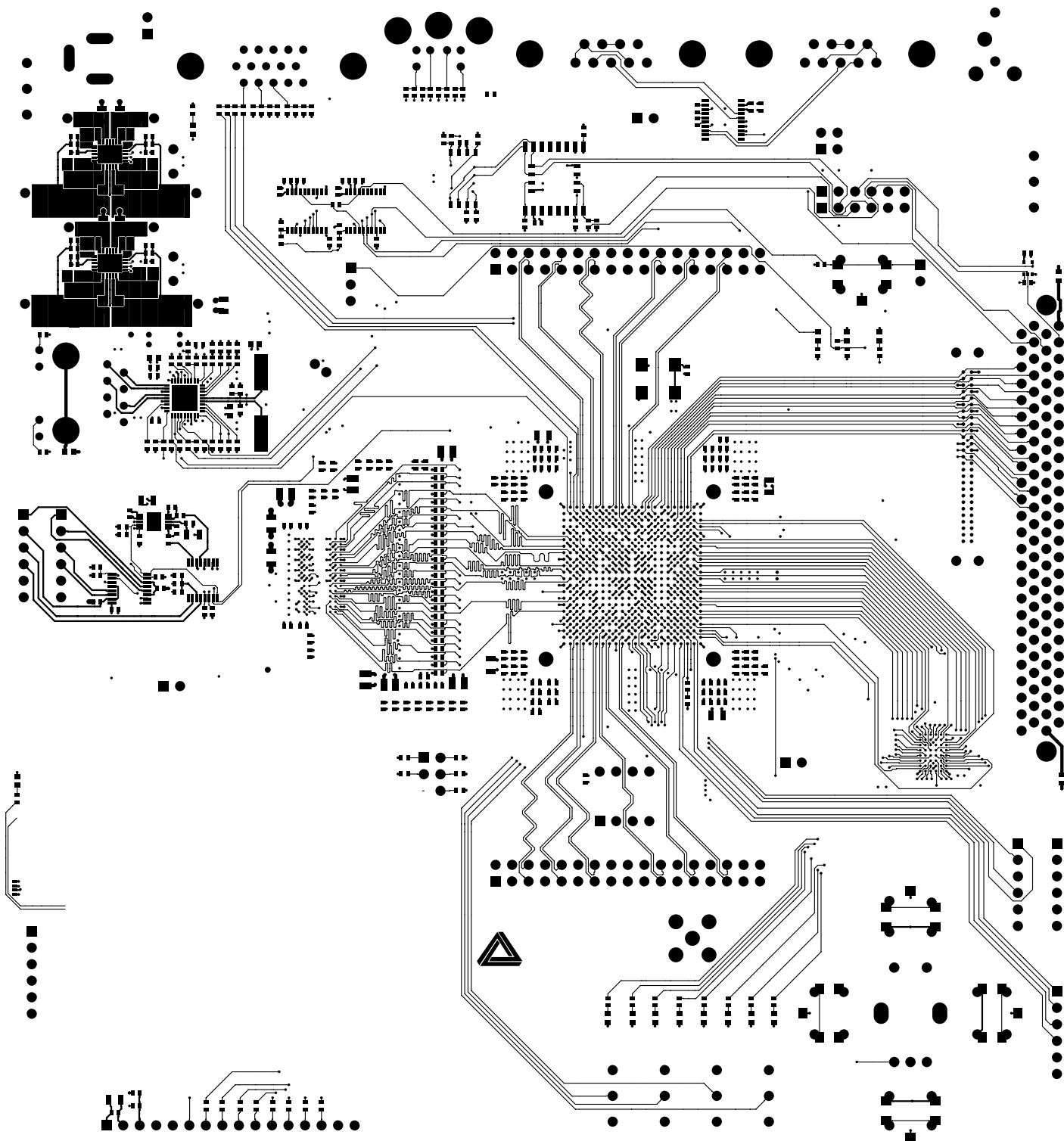
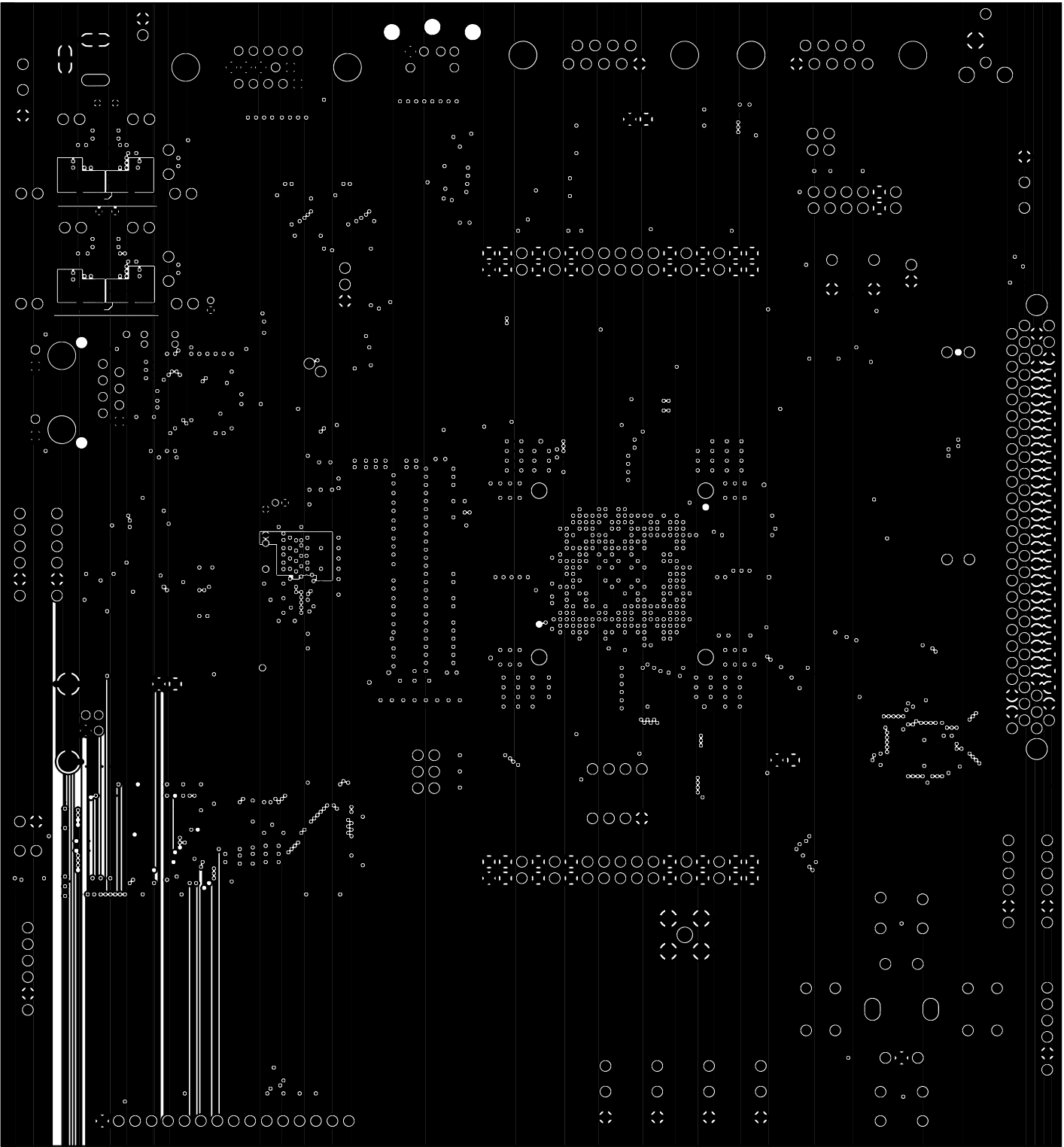


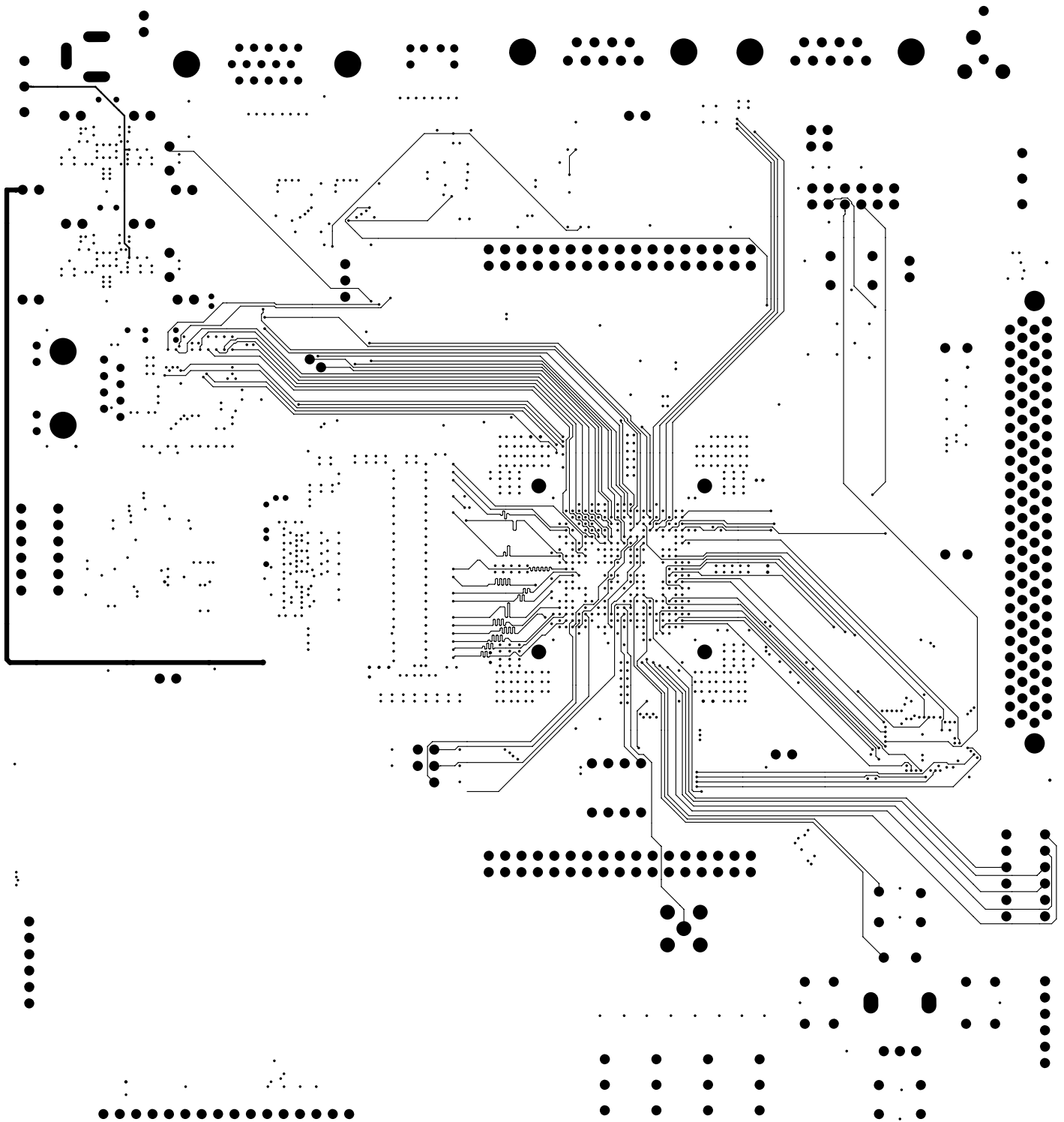
Through Holes						
Symbol	Diameter (in)	Tolerance (in)	Plated	Punched	Hole Name	Quantity
A	0.0090	+/- 0.0002	Yes	No	Rnd 9 +/- Tol 0.22	1452
B	0.0130	+/- 0.0003	Yes	No	Rnd 13 +/- Tol 0.32	21
C	0.0240	+/- 0.0006	Yes	No	Rnd 24 +/- Tol 0.6	18
D	0.0350	+/- 0.0010	Yes	No	Rnd 35 +/- Tol 1	37
E	0.0420	+/- 0.0010	Yes	No	Rnd 42 +/- Tol 1	345
F	0.0472	+/- 0.0020	Yes	No	Rnd 1.2 +/- Tol 0.05	5
G	0.0610	+/- 0.0015	Yes	No	Rnd 61 +/- Tol 1.5	10
H	0.0910	+/- 0.0025	Yes	No	Rnd 91 +/- Tol 2.5	2
J	0.1250	+/- 0.0030	Yes	No	Rnd 125 +/- Tol 3	8
K	0.0335	+/- 0.0010	No	No	Rnd 0.85 +/- Tol 0.025 Non-Plated	3
L	0.0420	+/- 0.0010	No	No	Rnd 42 +/- Tol 1 Non-Plated	6
M	0.0640	+/- 0.0020	No	No	Rnd 64 +/- Tol 2 Non-Plated	4
N	0.0890		No	No	Rnd 89 Non-Plated	3
P	0.1000	+/- 0.0025	No	No	Rnd 100 +/- Tol 2.5 Non-Plated	2
R	0.0260	+/- 0.0006	Yes	No	Slot 125x26 +/- Tol 0.6	3
T	0.0787	+/- 0.0020	Yes	No	Slot 3x2 +/- Tol 0.05	2

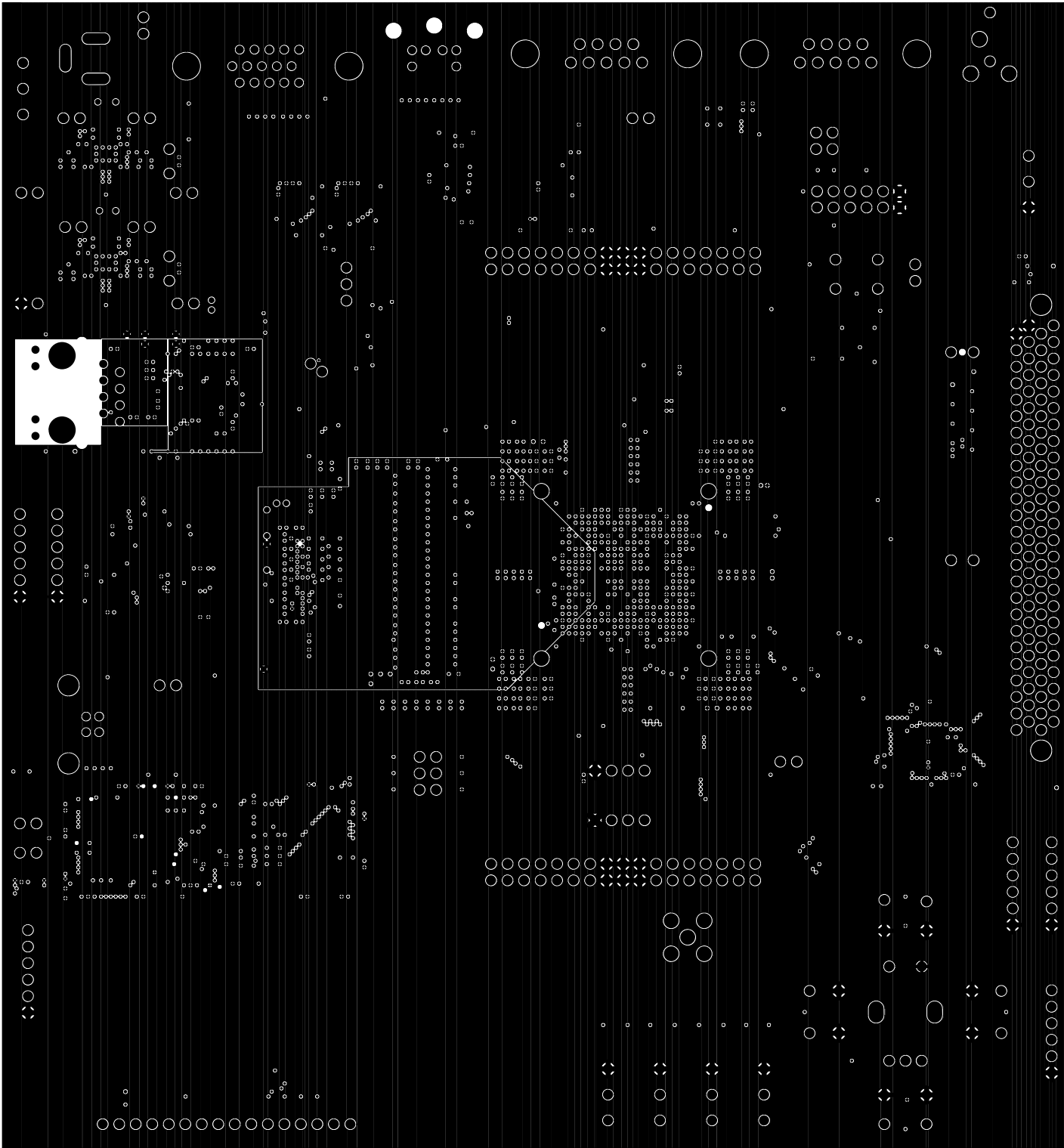


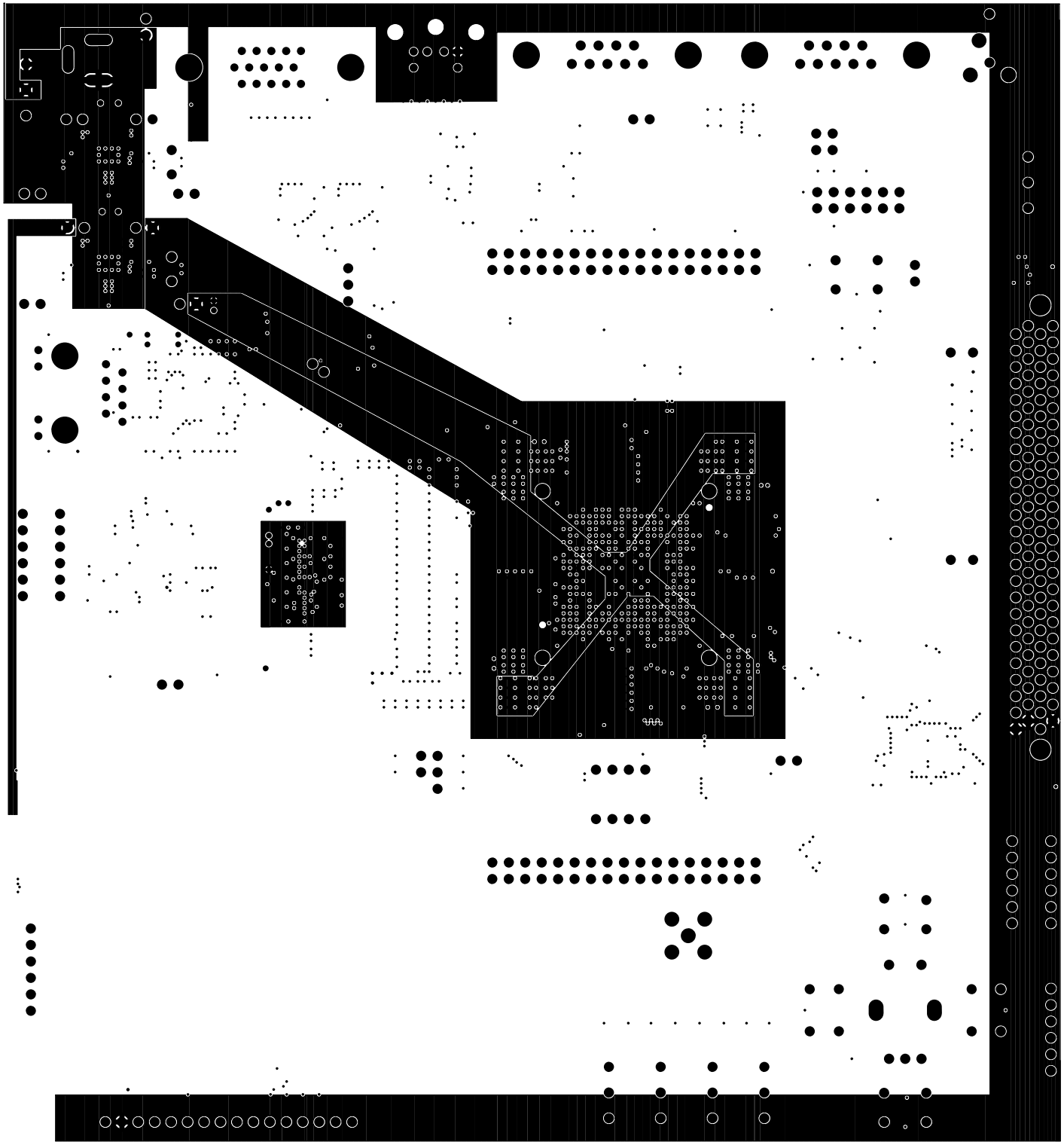


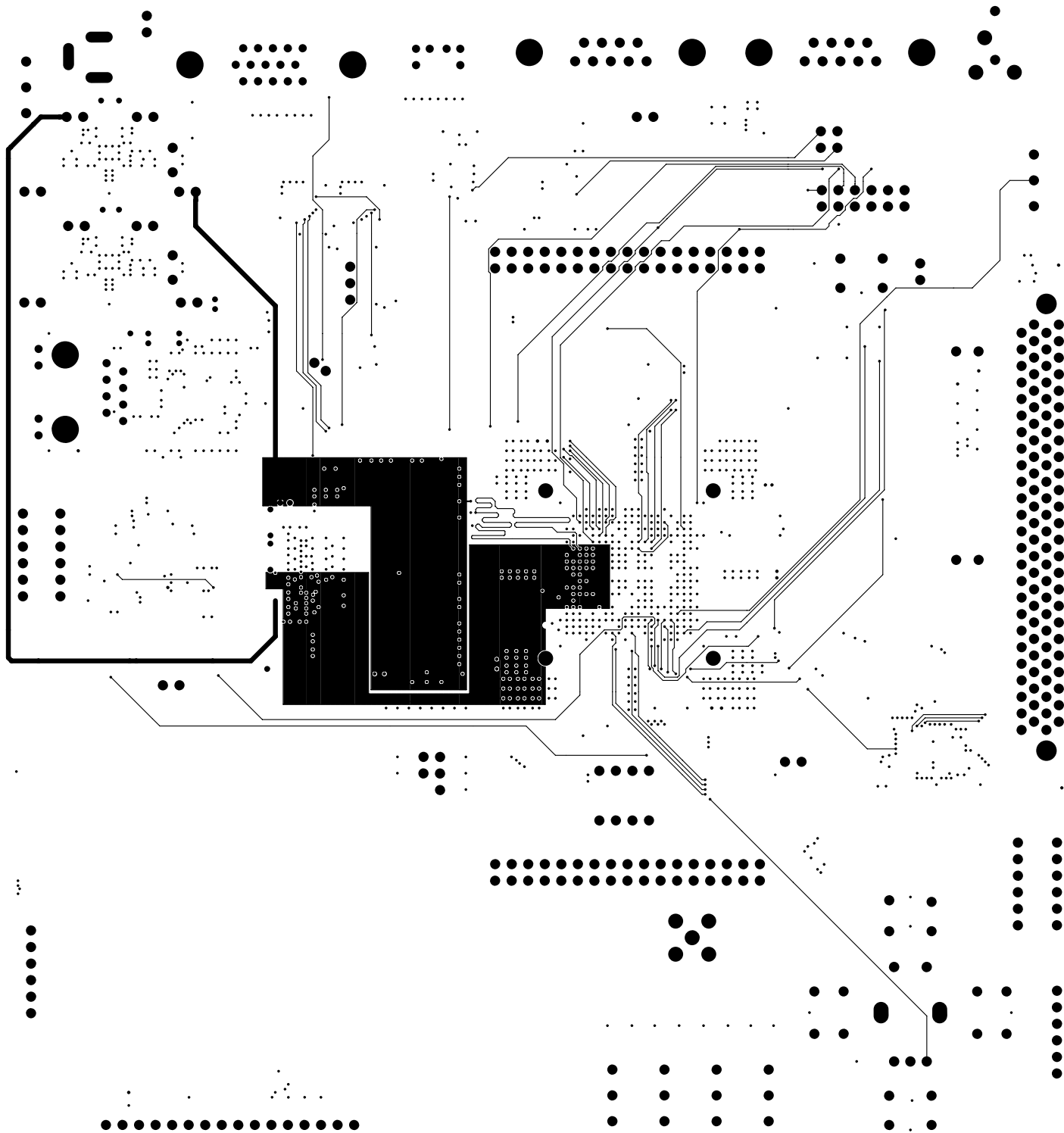


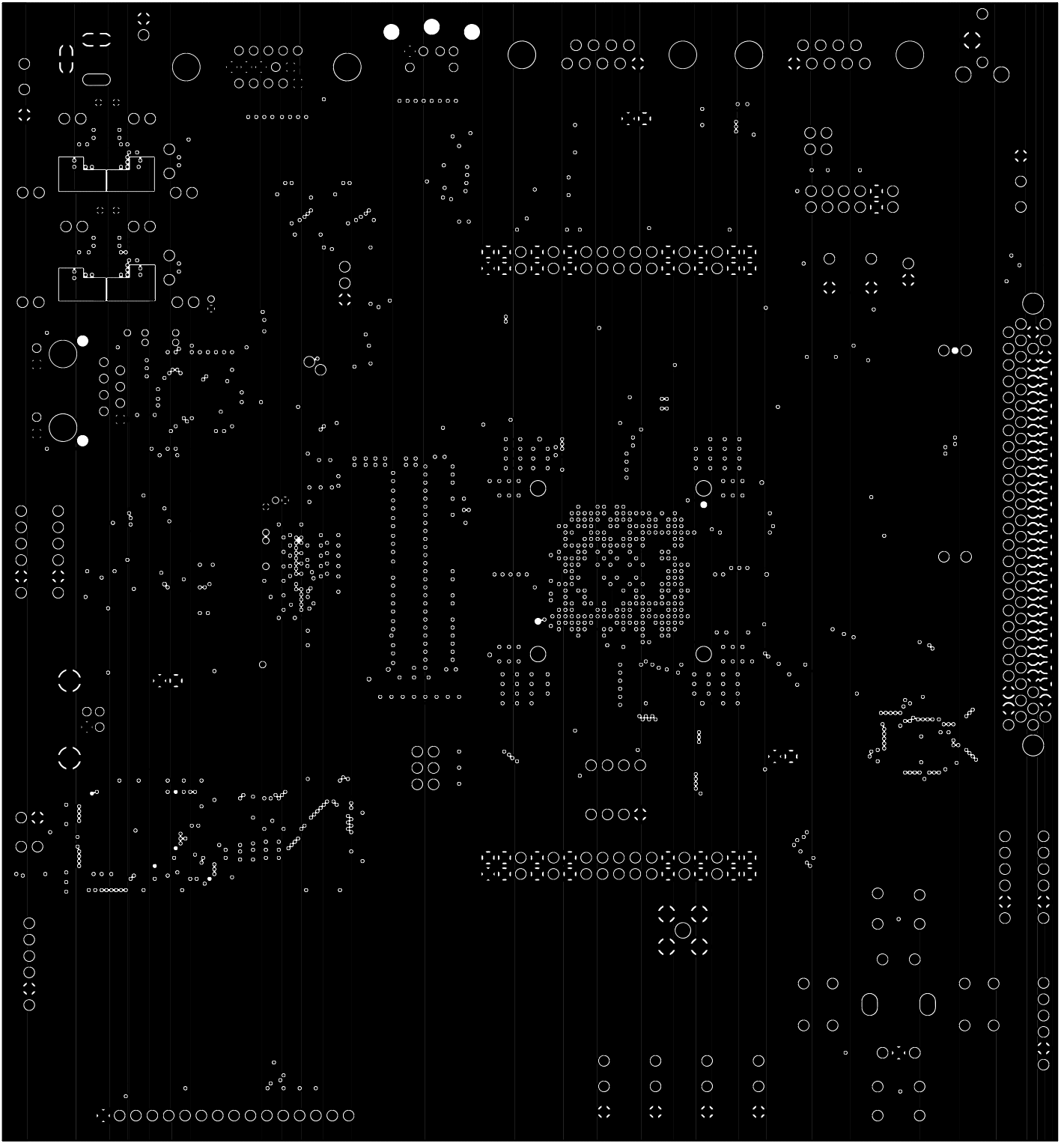


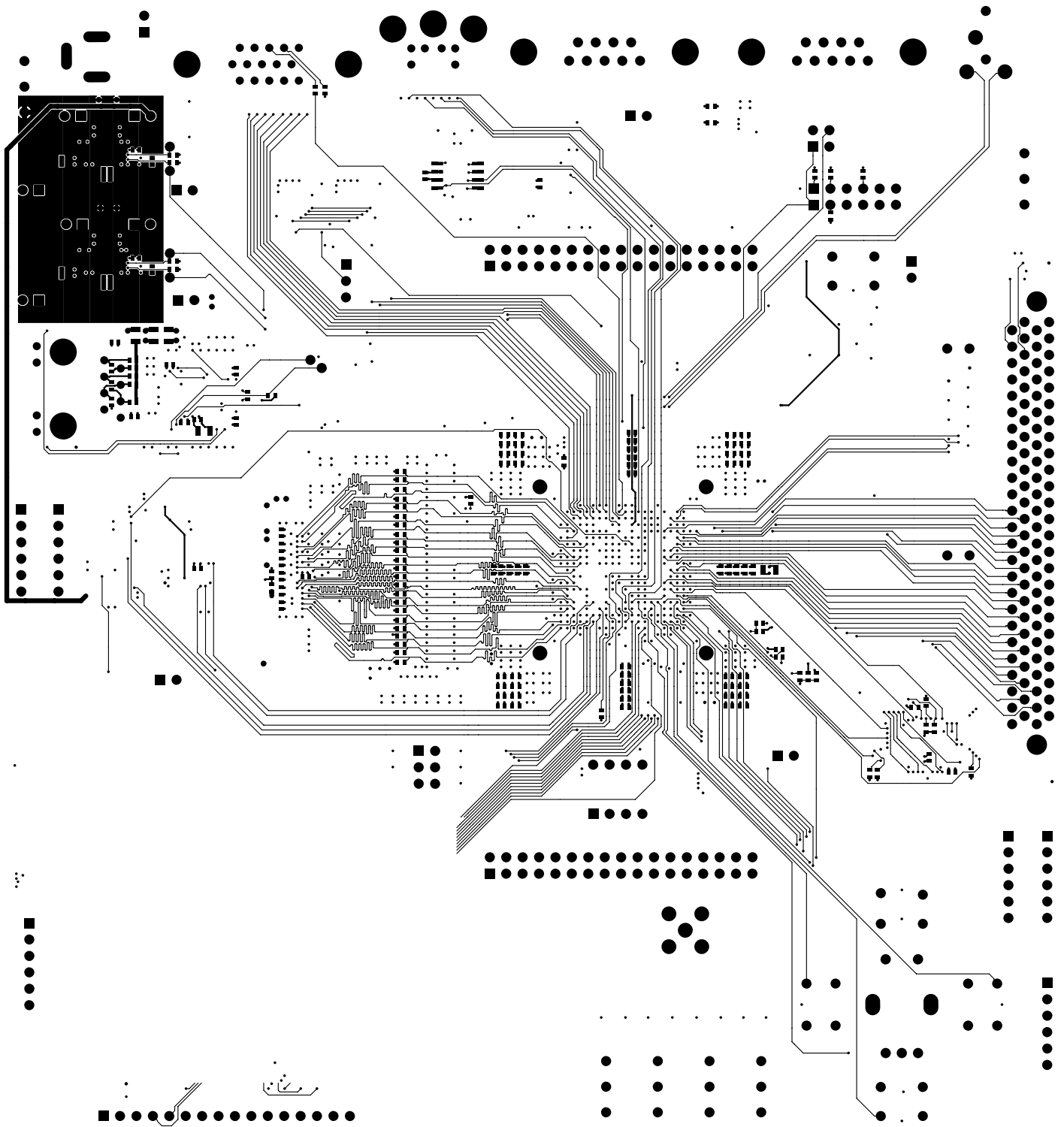


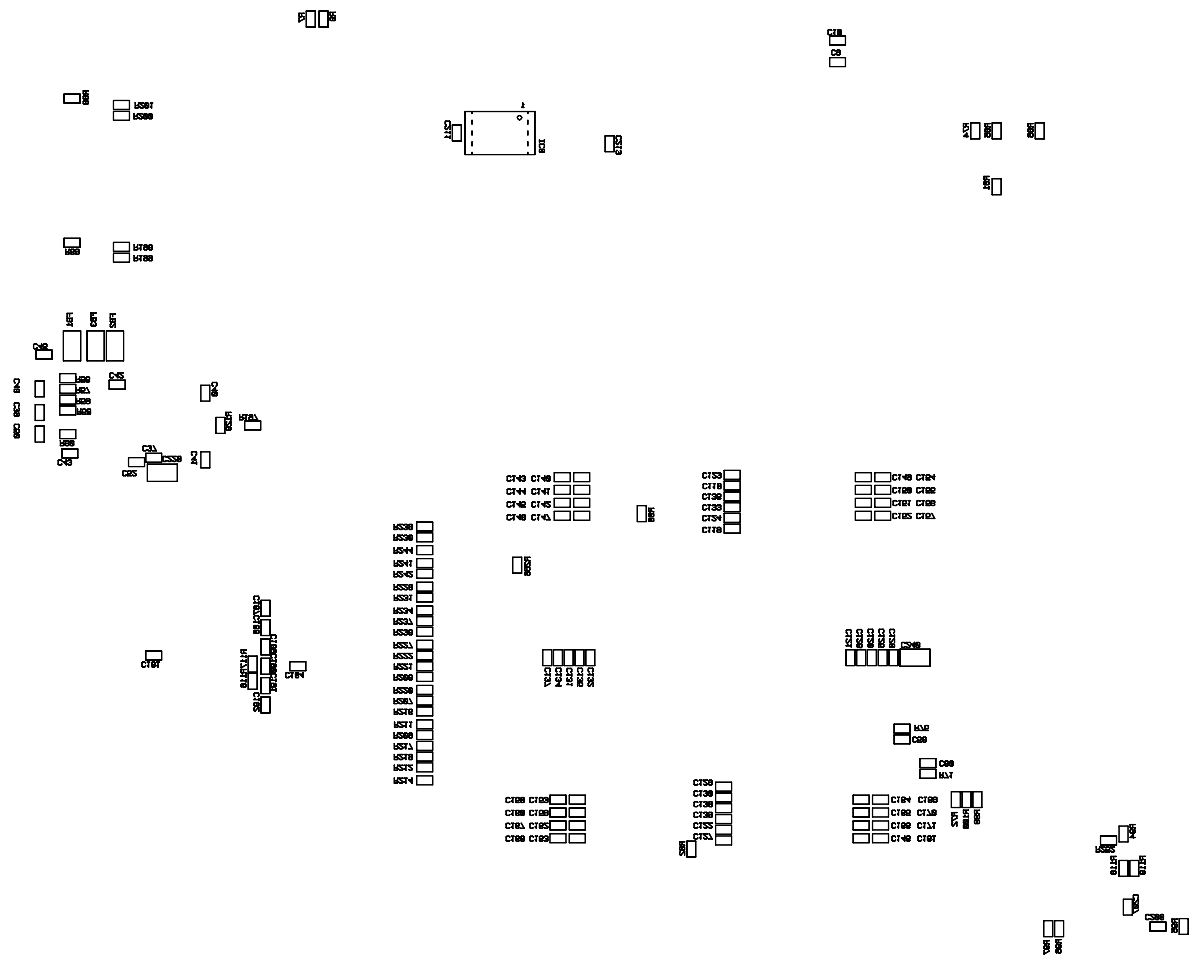


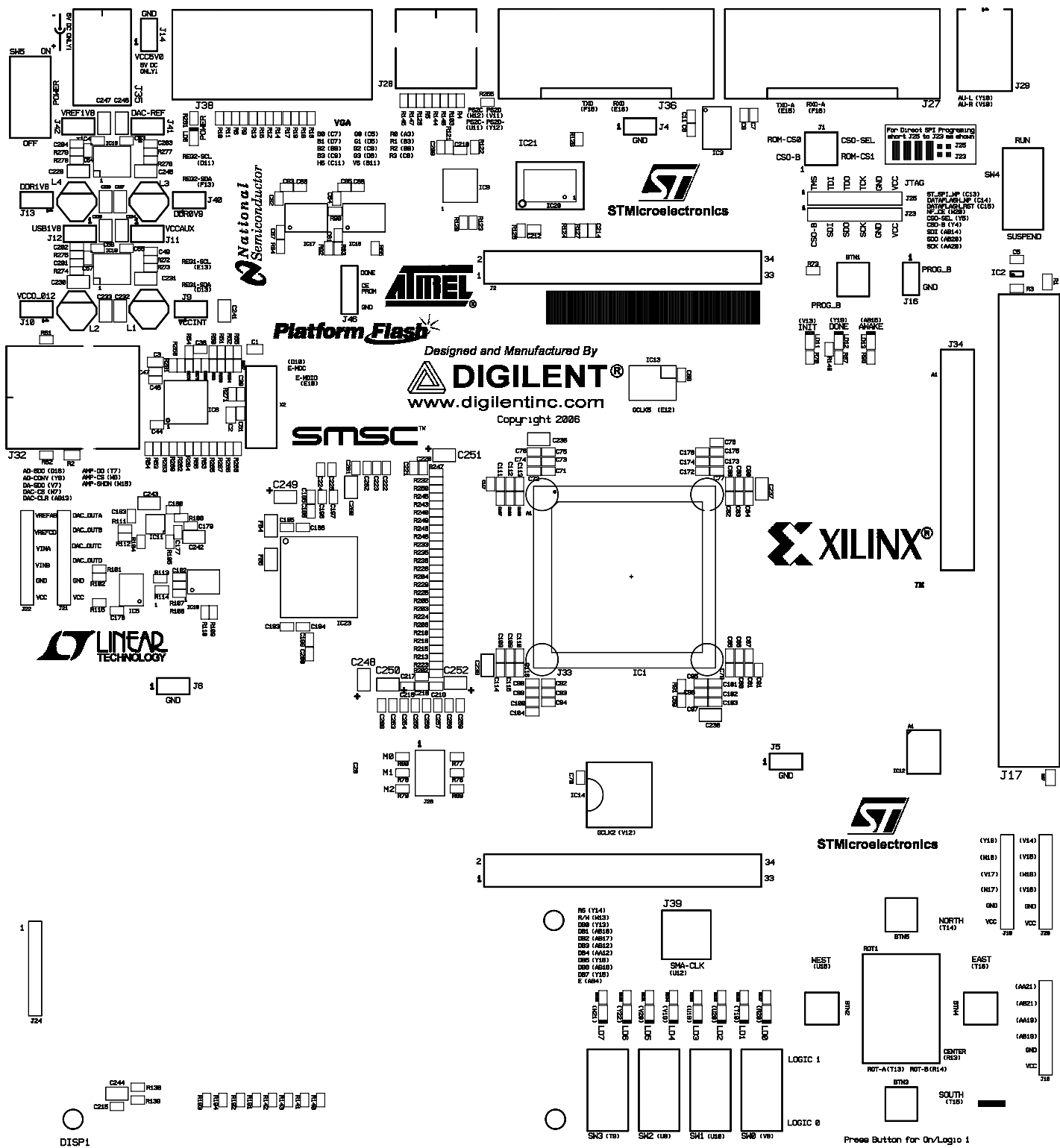




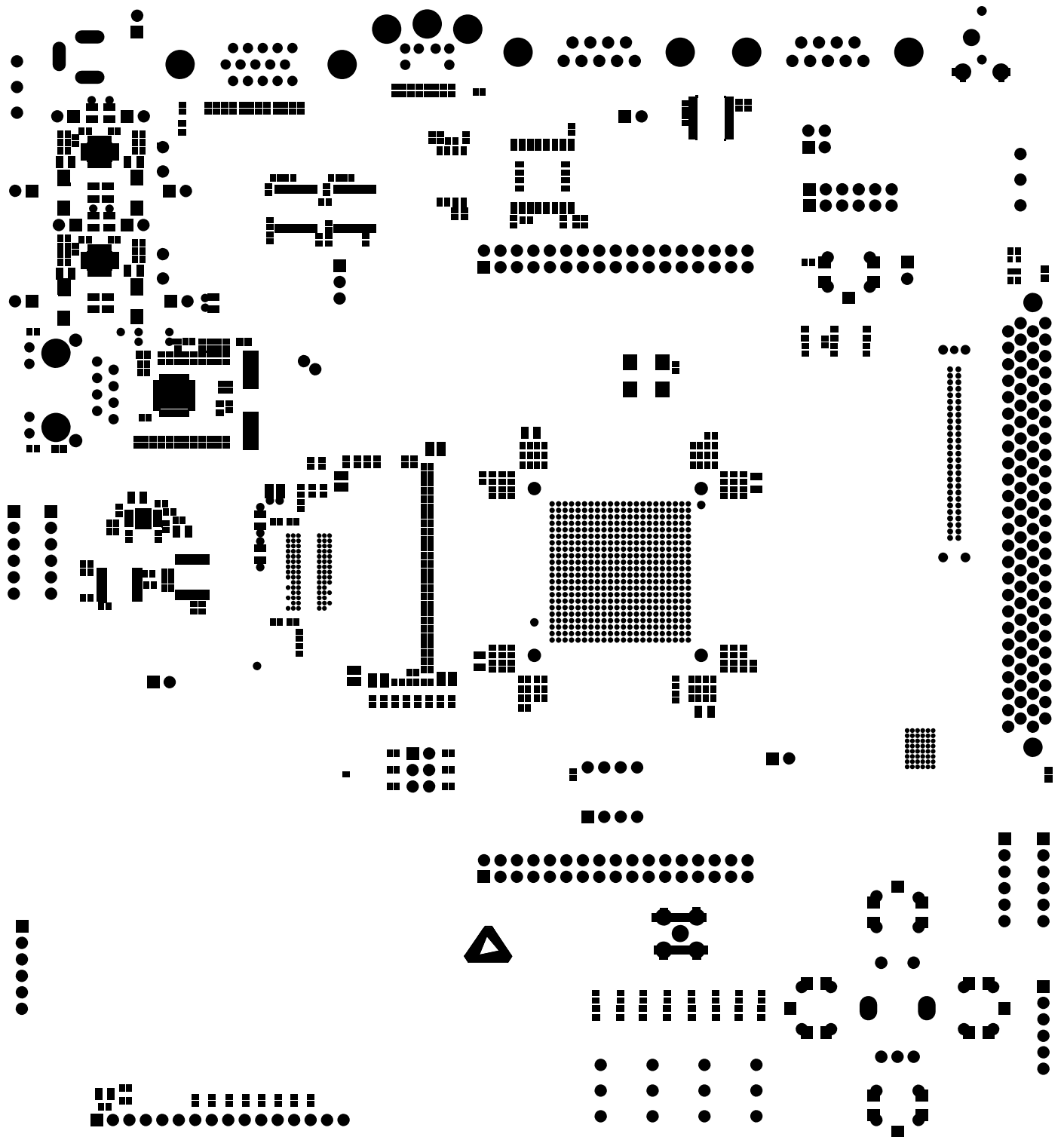














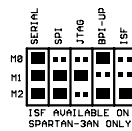
J2 DIFFERENTIAL RX PAIRS

XILINX P/N HW-SPAR3AN-SK-UNI-G (SPARTAN-3AN)  
XILINX P/N HW-SPAR3A-SK-UNI-G (SPARTAN-3A)  
DIGILENT PB210-112 REVISION D

DDR2  
SDRAM

XILINX  
FPGA DEVICE  
SPARTAN-3A  
SPARTAN-3AN

BOOT MODE SELECT



FX2 EXPANSION PORT

J15 DIFFERENTIAL TX PAIRS



