

Virtex UltraScale FPGA VCU1287 Characterization Kit IBERT

Getting Started Guide

Vivado Design Suite

UG1203 (v2016.4) December 15, 2016

Revision History

The following table shows the revision history for this document.

Date	Version	Revision
12/15/2016	2016.4	Updated for Vivado Design Suite 2016.4. Design file changed to rdf0368-vcu1287-ibert-2016-4.zip.
10/12/2016	2016.3	Updated for Vivado Design Suite 2016.3. Design file changed to rdf0368-vcu1287-ibert-2016-3.zip. Updated Figure 1-14 , Figure 1-23 , Figure 2-1 , Figure 2-4 , Figure 2-9 , Figure 2-15 , and Figure 2-20 .
06/08/2016	2016.2	Updated for Vivado Design Suite 2016.2. Design file changed to rdf0368-vcu1287-ibert-2016-2.zip.
04/13/2016	2016.1	Updated for Vivado Design Suite 2016.1. Design file rdf0368-vcu1287-ibert-2015-4.zip changed to rdf0368-vcu1287-ibert-2016-1.zip. Updated Figure 1-20 and Figure 1-29 . Added Training Resources in Appendix B .
02/22/2016	1.0	Initial Xilinx release.

Table of Contents

Revision History	2
Chapter 1: VCU1287 IBERT Getting Started Guide	
Overview	4
Requirements.....	5
Setting Up the VCU1287 Board.....	6
Extracting the Project Files	7
Running the GTH IBERT Demonstration	8
Running the GTY IBERT Demonstration	26
Chapter 2: Creating the IBERT Cores	
Creating the GTH IBERT Core.....	38
Creating the GTY IBERT Core.....	51
Appendix A: Warranty	
Appendix B: Additional Resources and Legal Notices	
Xilinx Resources	60
Solution Centers.....	60
References	60
Training Resources.....	61
Please Read: Important Legal Notices	61

VCU1287 IBERT Getting Started Guide

Overview

This document describes setting up the Virtex UltraScale FPGA VCU1287 GTH and GTY Transceiver Characterization Board to run the Integrated Bit Error Ratio Test (IBERT) demonstration using the Vivado® Design Suite. The designs required to run the IBERT demonstration are stored in a Secure Digital (SD) memory card that is provided with the VCU1287 board. The demonstration shows the capabilities of the Virtex UltraScale XCVU095-FFVB2104 FPGA GTH and GTY transceiver.

The VCU1287 board is described in detail in the VCU1287 Board User Guide (UG1120) [\[Ref 1\]](#).

The IBERT demonstrations in this guide operate one GTH Quad and one GTY QUAD. The procedure consists of:

1. [Setting Up the VCU1287 Board, page 6](#)
2. [Extracting the Project Files, page 7](#)
3. [Connecting the GTH Transceivers and Reference Clocks, page 8](#)
4. [Starting the SuperClock-2 Module, page 13](#)
5. [Configuring the FPGA, page 16](#)
6. [Setting Up the Vivado Design Suite, page 18](#)
7. [Viewing GTH Transceiver Operation, page 24](#)
8. [Closing the IBERT Demonstration, page 25](#)
9. [Connecting the GTY Transceivers and Reference Clocks, page 26](#)
10. [Starting the SuperClock-2 Module, page 28](#)
11. [Configuring the FPGA, page 29](#)
12. [Setting Up the Vivado Design Suite, page 31](#)
13. [Viewing GTY Transceiver Operation, page 36](#)
14. [Closing the IBERT Demonstration, page 37](#)

Requirements

The hardware and software required to run the GTH and GTY IBERT demonstrations are:

- Virtex UltraScale FPGA VCU1287 GTH and GTY transceiver characterization board, including:
 - One SD card containing the IBERT demonstration designs
 - One Samtec Bulls Eye™ cable
 - Eight SMA female-to-female (F-F) adapters
 - Six 50Ω SMA terminators
 - UltraScale transceiver power supply module (installed onboard)
 - SuperClock-2 module, Rev 1.0 (installed onboard)
 - Active BGA heat sink (installed on FPGA)
 - 12V DC power adapter
 - Two USB cables, standard-A plug to micro-B plug
- Host PC with:
 - SD card reader
 - USB ports
- Xilinx® Vivado Design Suite 2016.4

The hardware and software required to rebuild the IBERT demonstration designs are:

- Xilinx Vivado Design Suite 2016.4
- PC with a version of the Windows operating system supported by Xilinx Vivado Design Suite

Setting Up the VCU1287 Board

This section describes how to set up the VCU1287 board.



CAUTION! The VCU1287 board can be damaged by electrostatic discharge (ESD). Follow standard ESD prevention measures when handling the board, such as using a grounding strap and static dissipative mat.

When the VCU1287 board ships from the factory, it is configured for the support of both GTH and GTY IBERT demonstrations described in this document. If the board has been re-configured, it must be returned to the default setup before running the IBERT demonstrations.

1. Move all jumpers and switches to their default positions. The default jumper and switch positions are listed in the *VCU1287 Characterization Board User Guide* (UG1121) [Ref 1].
2. Install the UltraScale transceiver power module by plugging it into connectors J124–J46 and J138.
3. Install the SuperClock-2 module:
 - a. Align the three metal standoffs on the bottom side of the module with the three mounting holes in the SUPERCLOCK-2 MODULE interface of the VCU1287 board.
 - b. Using three 4-40 x 0.25 inch screws, firmly screw down the module from the bottom of the VCU1287 board.
 - c. On the SuperClock-2 module, place a jumper across pins 2–3 (2V5) of the CONTROL VOLTAGE header, J18, and place another jumper across Si570 INH header J11.
 - d. Screw down a 50Ω SMA terminator onto each of the six unused Si5368 clock output SMA connectors: J7, J8, J12, J15, J16, and J17.

Extracting the Project Files

The Vivado Design Suite BIT files required to run the IBERT demonstrations are located in `rdf0368-vcu1287-ibert-2016-4.zip` on the SD card provided with the VCU1287 board. The BIT files are also available online at the [Virtex UltraScale FPGA VCU1287 Characterization Kit documentation](#) website.

The ZIP file contains these BIT files:

- `vcu1287_ibert_q124_125.bit`
- `vcu1287_ibert_q125_125.bit`
- `vcu1287_ibert_q126_125.bit`
- `vcu1287_ibert_q127_125.bit`
- `vcu1287_ibert_q128_125.bit`
- `vcu1287_ibert_q129_125.bit`
- `vcu1287_ibert_q130_125.bit`
- `vcu1287_ibert_q131_125.bit`
- `vcu1287_ibert_q224_125.bit`
- `vcu1287_ibert_q225_125.bit`
- `vcu1287_ibert_q226_125.bit`
- `vcu1287_ibert_q227_125.bit`
- `vcu1287_ibert_q228_125.bit`
- `vcu1287_ibert_q229_125.bit`
- `vcu1287_ibert_q230_125.bit`
- `vcu1287_ibert_q231_125.bit`

To copy the files from the SD card:

1. Connect the SD card to the host computer.
2. Locate the file `rdf0368-vcu1287-ibert-2016-4.zip` on the SD card.
3. Unzip the files to a working directory on the host computer.

Running the GTH IBERT Demonstration

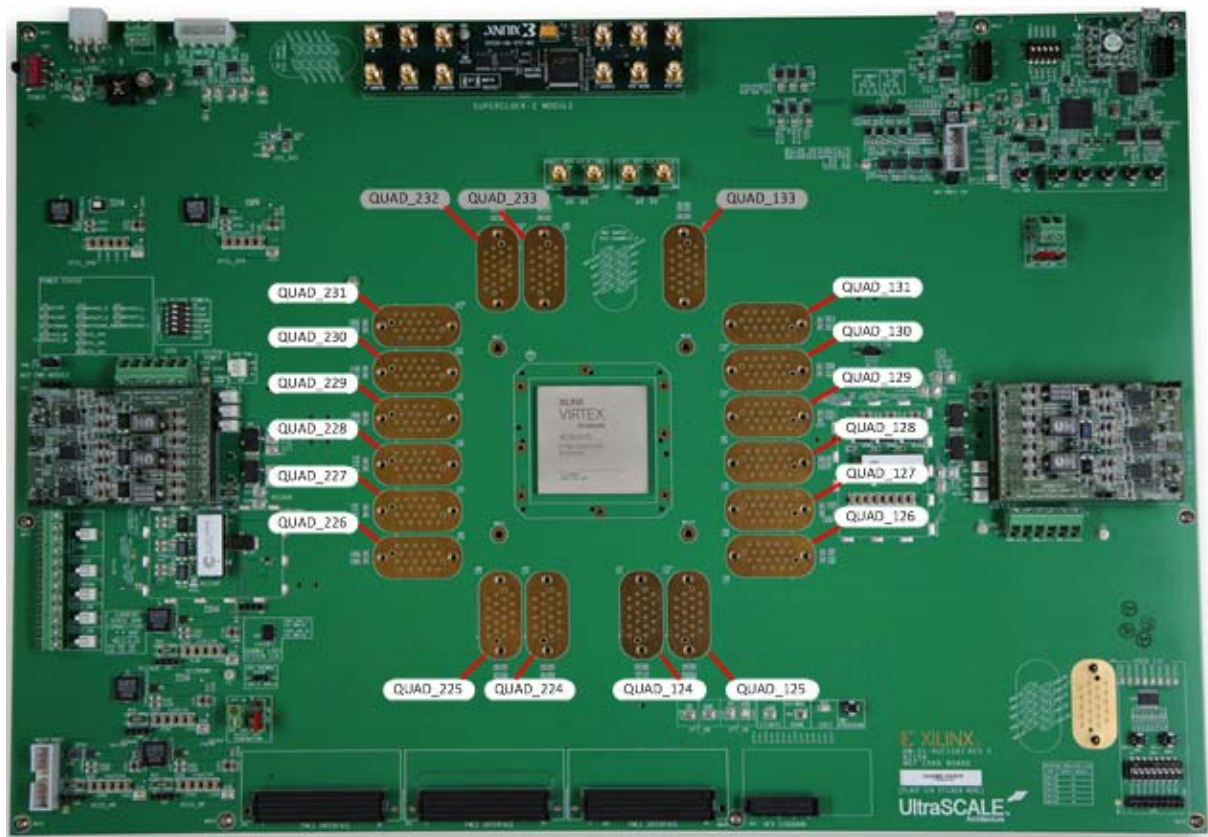
The GTH IBERT demonstration operates one GTH Quad at a time. This section describes how to test GTH Quad 224. The remaining GTH Quads can be tested following a similar series of steps.

Connecting the GTH Transceivers and Reference Clocks

Figure 1-1 shows the locations for GTH and GTY transceiver Quads on the VCU1287 board.

Figure 1-1 is for reference only and might not reflect the current revision of the board.

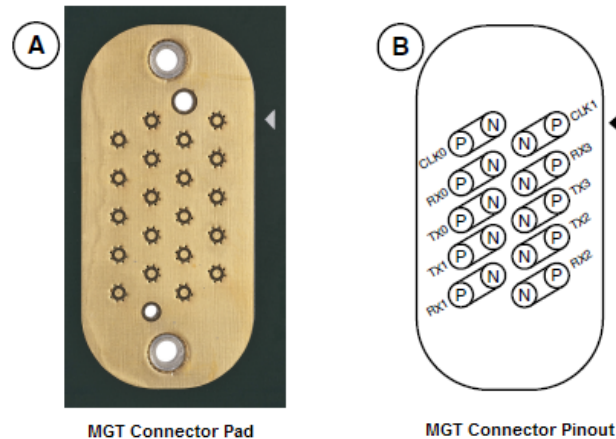
Note: Quads 133, 232, and 233 are not available on the XCVU095 device.



X15535-121416

Figure 1-1: VCU1287 GTH and GTY Quad Locations

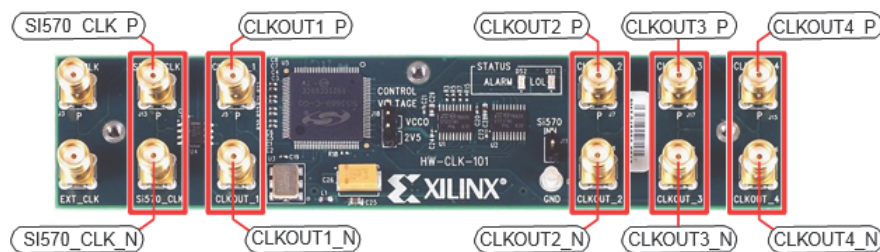
All multi-gigabit transceiver (MGT) pins and reference clock pins are routed from the FPGA to a connector pad that interfaces with Samtec Bulls Eye connectors. [Figure 1-2 A](#) shows the connector pad. [Figure 1-2 B](#) shows the connector pinout.



X15541-121416

Figure 1-2: A—MGT Connector Pad. B—MGT Connector Pinout

The SuperClock-2 module provides LVDS clock outputs for the MGT transceiver reference clocks in the IBERT demonstrations. [Figure 1-3](#) shows the locations of the differential clock SMA connectors on the clock module which can be connected to the reference clock cables.



X15542-121416

Figure 1-3: SuperClock-2 Module Output Clock SMA Locations

The four SMA pairs labeled CLKOUT provide LVDS clock outputs from the Si5368 clock multiplier/jitter attenuator device on the clock module. The SMA pair labeled Si570_CLK provides LVDS clock output from the Si570 programmable oscillator on the clock module.

Note: The Si570 oscillator does not support LVDS output on the Rev B and earlier revisions of the SuperClock-2 module.

For more information on the SuperClock-2 module, see the *HW-CLK-101-SCLK2 SuperClock-2 Module User Guide* (UG770) [Ref 2].

Attach the GTH Quad Connector

Before connecting the Bulls Eye cable assembly to the board, firmly secure the blue elastomer seal provided with the cable assembly to the bottom of the connector housing if it is not already inserted (see [Figure 1-4](#)).

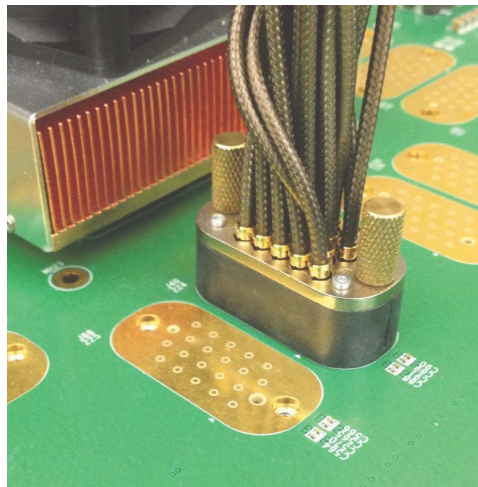
Note: [Figure 1-4](#) is for reference only and might not reflect the current version of the connector.



X15543-121416

Figure 1-4: Bulls Eye Connector with Elastomer Seal

Attach the Samtec Bulls Eye connector to GTH Quad 224 ([Figure 1-5](#)), aligning the two indexing pins on the bottom of the connector with the guide holes on the board. Hold the connector flush with the board and fasten it by tightening the two captive screws.



X15544-121416

Figure 1-5: Bulls Eye Connector Attached to Quad 224

GTH Transceiver Clock Connections

See [Figure 1-2](#) to identify the P and N coax cables that are connected to the CLK0 reference clock inputs. Connect these cables to the SuperClock-2 module as follows:

- CLK0_P coax cable → SMA connector J7 (CLKOUT1_P) on the SuperClock-2 module
- CLK0_N coax cable → SMA connector J8 (CLKOUT1_N) on the SuperClock-2 module

Note: Any one of the five differential outputs from the SuperClock-2 module can be used to source the GTH reference clock. CLKOUT1_P and CLKOUT1_N are used here as an example.

MGT TX/RX Loopback Connections

See [Figure 1-2](#) to identify the P and N coax cables that are connected to the four receivers (RX0, RX1, RX2, and RX3) and the four transmitters (TX0, TX1, TX2, and TX3). Use eight SMA female-to-female (F-F) adapters ([Figure 1-6](#)) to connect the transmit and receive cables as shown in [Figure 1-7](#):

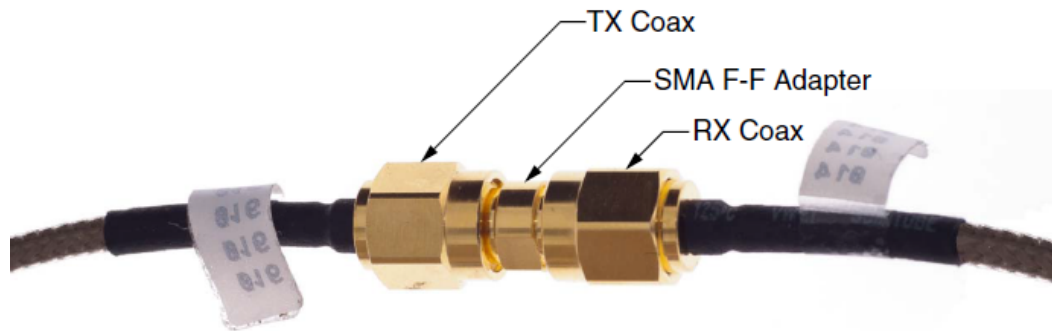
- TX0_P → SMA F-F Adapter → RX0_P
- TX0_N → SMA F-F Adapter → RX0_N
- TX1_P → SMA F-F Adapter → RX1_P
- TX1_N → SMA F-F Adapter → RX1_N
- TX2_P → SMA F-F Adapter → RX2_P
- TX2_N → SMA F-F Adapter → RX2_N
- TX3_P → SMA F-F Adapter → RX3_P
- TX3_N → SMA F-F Adapter → RX3_N

Note: To ensure good connectivity, it is recommended that the adapters be secured with a wrench; however, do not over-tighten the SMAs.



X15545-121416

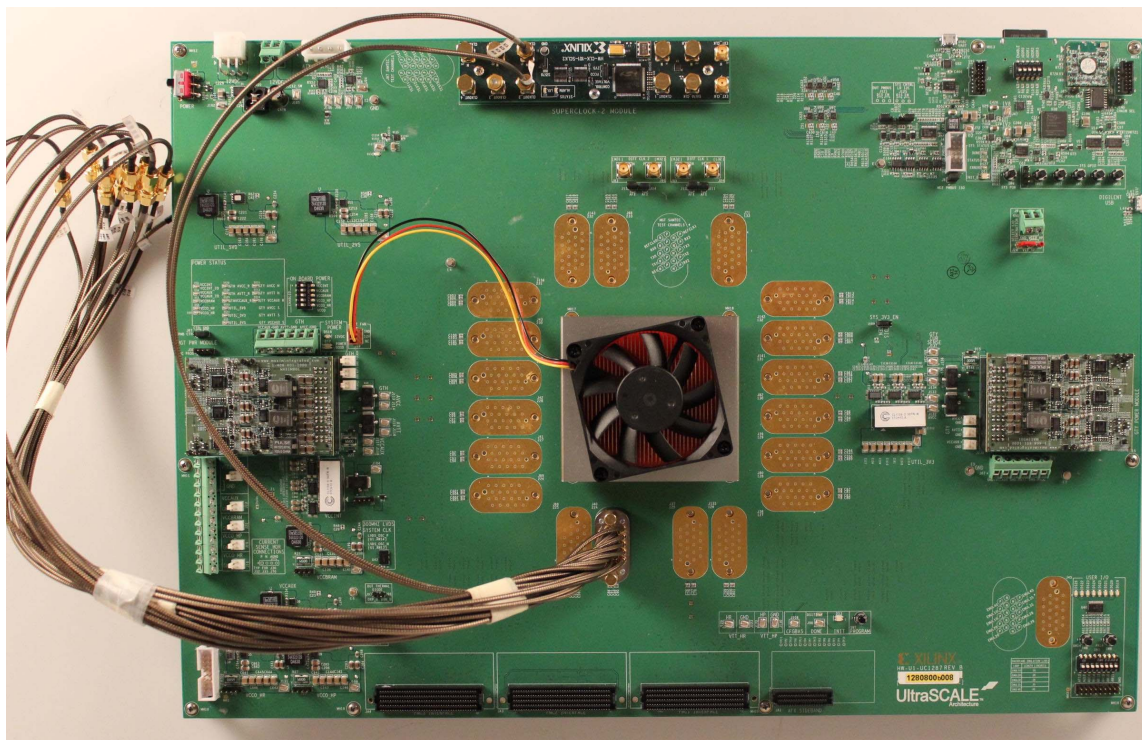
Figure 1-6: SMA F-F Adapter



X15546-121416

Figure 1-7: TX-to-RX Loopback Connection Example

Figure 1-8 shows the VCU1287 board with the cable connections required for the Quad 224 GTH IBERT demonstration.



X15547-121416

Figure 1-8: Cable Connections for Quad 224 GTH IBERT Demonstration

Starting the SuperClock-2 Module

The SuperClock-2 module features two clock-source components:

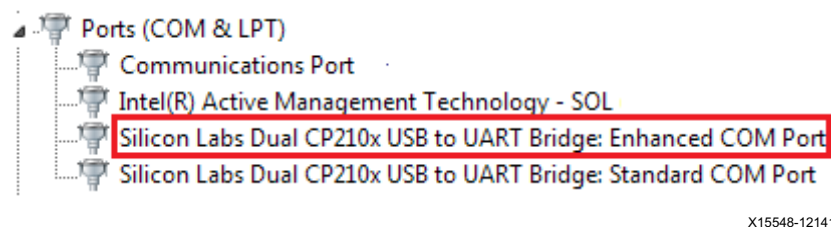
- Always-on Si570 crystal oscillator
- Si5368 jitter-attenuating clock multiplier

Outputs from either source can be used to drive the transceiver reference clocks.

To start the SuperClock-2 module:

1. The SuperClock-2 module is configured using the Xilinx XC7Z010CLG225 Zynq-7000APSoC System Controller command line which can be accessed through a serial communication terminal connection using the enhanced communication port of the Silicon Labs USB to Dual UART Bridge (Figure 1-9). Additional information about the Silicon Labs USB-to-UART is available in *Silicon Labs CP210x USB-to-UART Installation Guide* (UG1033) [Ref 3].

Review the *VCU1287 Evaluation Board User Guide* (UG1120) [Ref 1] for additional information about the System Controller.



X15548-121416

Figure 1-9: Silicon Labs Enhanced COM PORT

2. Set the System Controller configuration DIP switches (SW13) to the OFF position (Figure 1-10). This disables configuration of the FPGA at power reset.



X15549-121416

Figure 1-10: Configuration DIP Switch (SW13)

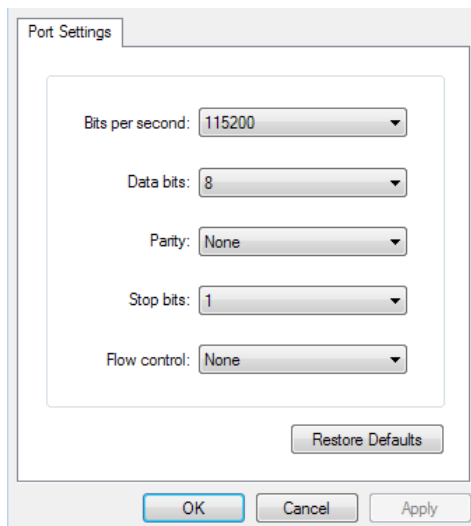
3. Connect J1 connector (USB/UART) on the VCU1287 board to the host computer using one of the standard-A plug to micro-B plug USB cables provided (Figure 1-11) and power up the board by placing SW1 in the ON position.



X15550-121416

Figure 1-11: USB-UART Connector

4. Open a serial communication terminal application on the host computer, for example "HyperTerminal", and connect to the port number associated with the **enhanced COM port** of the Silicon Lab USB-UART Bridge. Set up a new connection as in Figure 1-12, and press the **Return** key to connect to view the **System Controller** options menu.



X15551-121416

Figure 1-12: Terminal Setting

5. From the main **System Controller** menu, select option (1) to access the SuperClock-2 options:

VCU1287 System Controller v1.0

- Main Menu -

1. Set Programmable Clocks

2. Get Power System (PMBUS) Voltages
3. Get Power Monitoring Data (INA226)
4. Adjust FPGA Mezzanine Card (FMC) Settings
5. Get GPIO Data
6. Get EEPROM Data
7. Configure UltraScale FPGA

Select an option

6. Use the Programmable Clocks menu option (2) to set the output clock frequencies of the Si5368 clocks to 125 MHz.

VCU1287 System Controller v1.0

- Clock Menu -

1. Set VCU1287 Si570 Frequency
- 2. Set VCU1287 Si5368 Frequency**
3. Save VCU1287 Clock Frequency to EEPROM
4. Restore VCU1287 Clock Frequency from EEPROM
5. View VCU1287 Saved Clocks in EEPROM
6. Set VCU1287 Clock Restore Options
7. Read VCU1287 Si570 Frequency
8. Read VCU1287 Si5368 Frequency
0. Return to Main Menu

Select an option

7. Select option 2 (Free-Run crystal) operating mode when prompted.

Choose si5368 operating mode:

1 - Auto-Select

2 - **Free-Run using XA-XB crystal**

Configuring the FPGA

The VCU1287 board additionally utilizes the Xilinx XC7Z010CLG225 Zynq-7000 AP SoC System Controller to implement a System Integrated Configuration Engine (System ICE) to configure the FPGA using one of the configuration *.bit files provided on the SD card in 8-bit SMAP configuration mode.

The FPGA can also be configured through the Vivado Design Suite using the *.bit files available on the SD card and online (as collection `rd0368-vcu1287-ibert-2016-4.zip`) at the [Virtex UltraScale FPGA VCU1287 Characterization Kit documentation](#) website.

Review *UltraScale Architecture Configuration User Guide* (UG570) [Ref 4] for additional information about UltraScale device configuration.

1. Insert the SD card provided with the VCU1287 board into the SD card reader slot located on the bottom-side (upper-right corner) of the VCU1287 board.
2. From the main **System Controller** menu, select option (7) to access the UltraScale FPGA configuration options:

VCU1287 System Controller v1.0

- Main Menu -

1. Set Programmable Clocks
2. Get Power System (PMBUS) Voltages
3. Get Power Monitoring Data (INA226)
4. Adjust FPGA Mezzanine Card (FMC) Settings
5. Get GPIO Data
6. Get EEPROM Data
7. **Configure UltraScale FPGA**

Select an option

3. Select option (1) to configure the FPGA from the SD card:

VCU1287 System Controller

- CONFIG Menu -

1. Configure UltraScale FPGA from SD Card

0. Return to Main Menu

Select an option

The IBERT design demonstrations included with the SD cards can be selected using one of the set numbers listed in [Table 1-1](#).

Table 1-1: IBERT Examples Bitstream Number

IBERT Demonstration Design	Bitstream Number
QUAD_124	0
QUAD_125	1
QUAD_126	2
QUAD_127	3
QUAD_128	4
QUAD_129	5
QUAD_130	6
QUAD_131	7
QUAD_224	8
QUAD_225	9
QUAD_226	10
QUAD_227	11
QUAD_228	12
QUAD_229	13
QUAD_230	14
QUAD_231	15

4. Select option (8) to configure the FPGA with the Quad 224 IBERT example design. Press **Enter** and review the terminal for configuration progress:

Enter a Bitstream number (0-15):

8

Info: xilinx.sys opened

Info: Opening rev_1/set8/config.def

Info: Configuration definition file "rev_1/set8/config.def" opened

Info: Clock divider is set to 2

Info: Configuration clock frequency is 25MHz

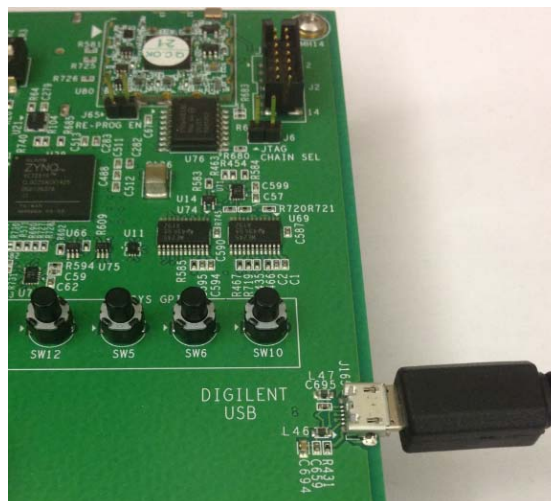
Info: Bitfile "rev_1/set8/vu95Q224.bit" opened

...10%...20%...30%...40%...50%...60%...70%...80%...90%...100%

Configuration completed successfully

Setting Up the Vivado Design Suite

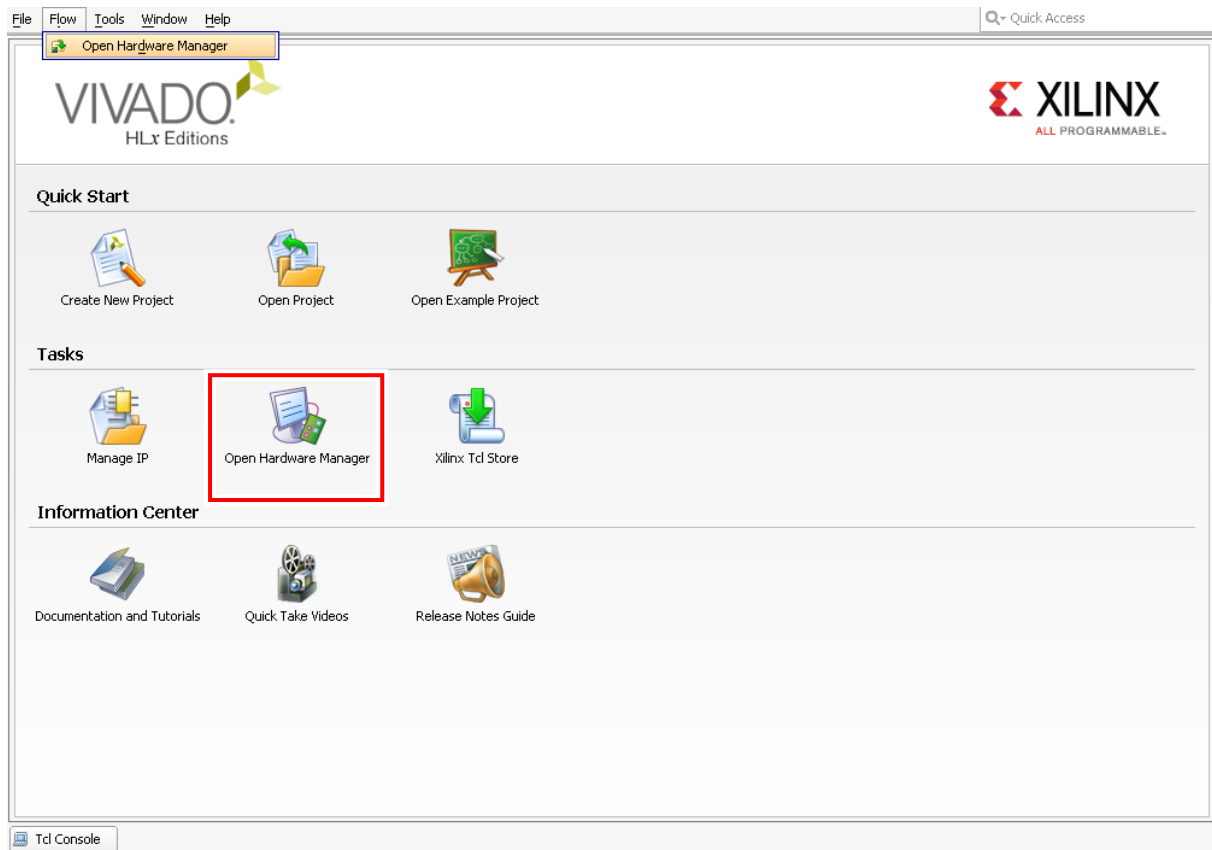
1. Connect the host computer to the VCU1287 board using the second standard-A plug to micro-B plug USB cable. The standard-A plug connects to a USB port on the host computer and the micro-B plug connects to J165, the Digilent USB JTAG configuration port on the VCU1287 board (Figure 1-13).



X15552-121416

Figure 1-13: JTAG Connector

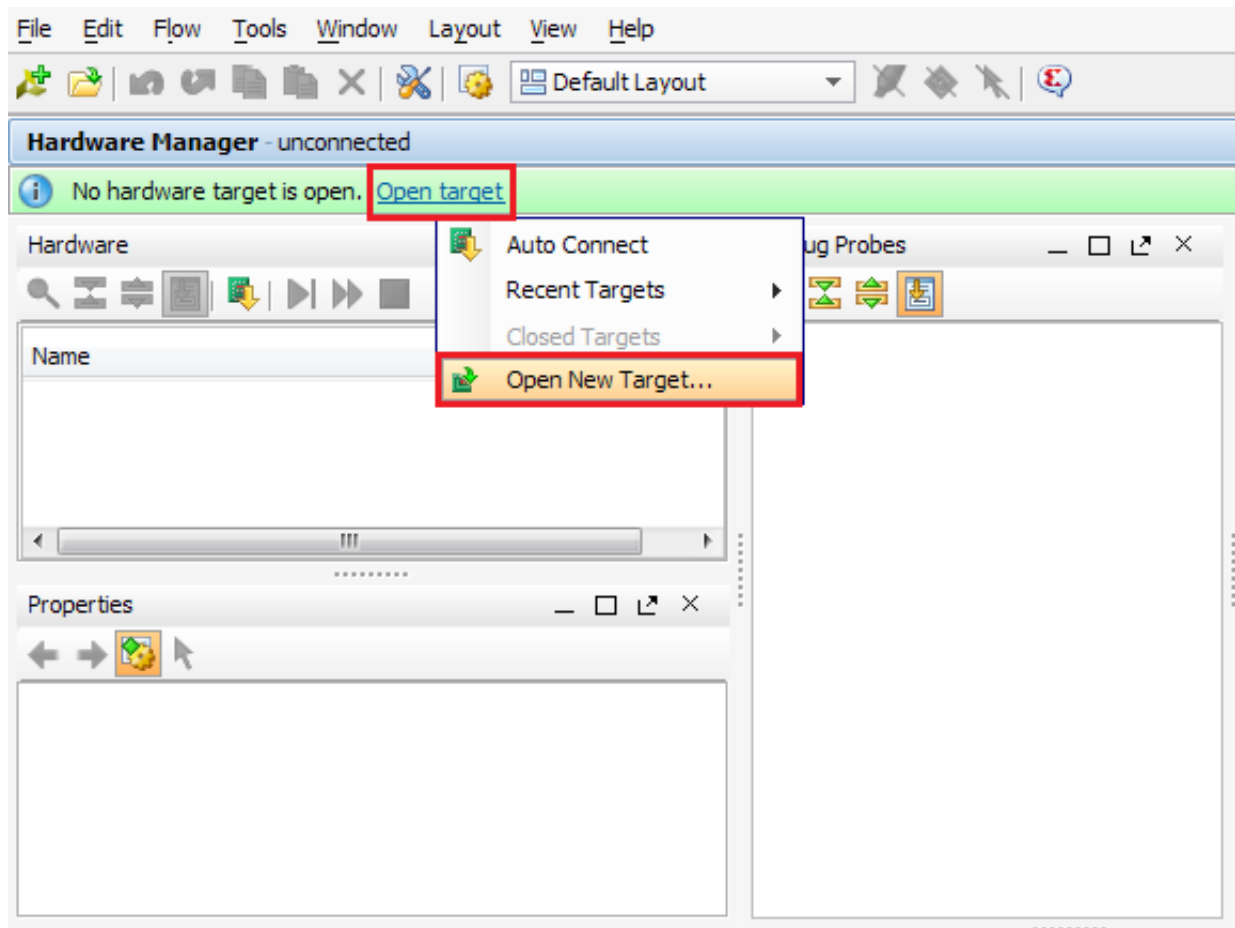
2. Start the Vivado Design Suite on the host computer and click **Flow > Open Hardware Manager** (highlighted in Figure 1-14).



X15553-121416

Figure 1-14: Vivado Design Suite, Open Hardware Manager

3. In the Hardware Manager window (Figure 1-15), click **Open New Target**.

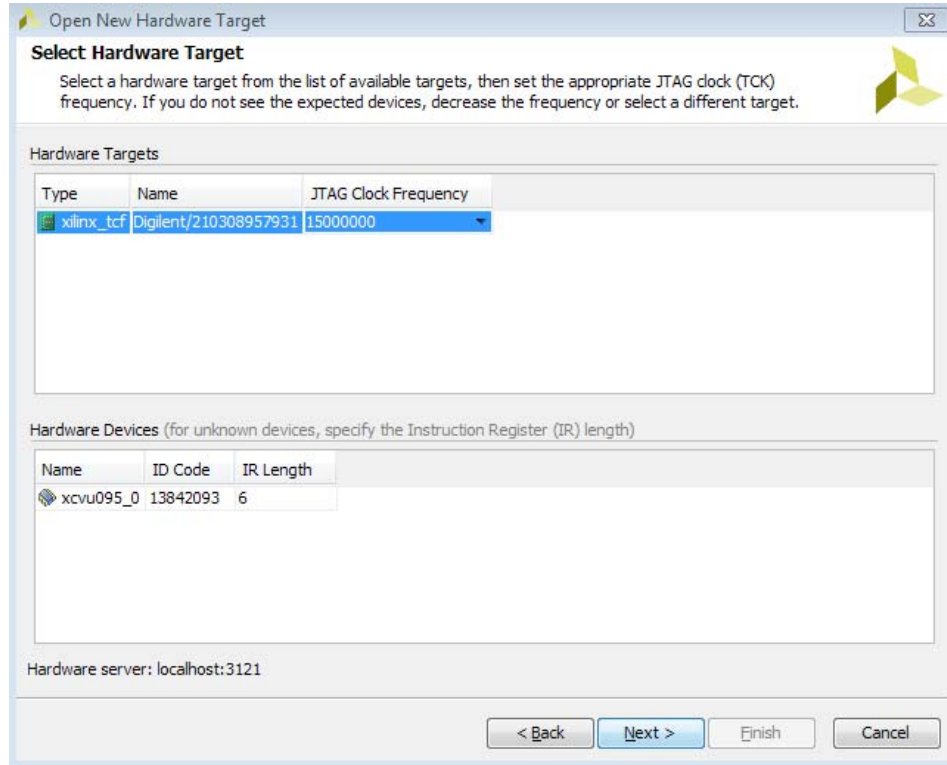


X15554-121416

Figure 1-15: Open a New Hardware Manager

4. An Open Hardware Target wizard opens. Click **Next** in the first window.
5. In the Hardware Server Settings window, select **Local server (target is on local machine)**. Click **Next**.

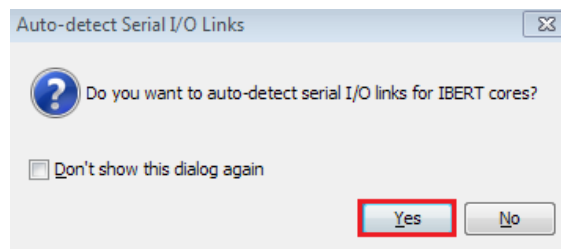
6. In the Select Hardware Target window, the **xilinx_tcf** cable appears under **Hardware Targets**, and the JTAG chain contents of the selected cable appear under **Hardware Devices** (Figure 1-16). Select the **xilinx_tcf_Digilent** target and keep the JTAG Clock Frequency at the default value (**15 MHz**). Click **Next**.



X15555-121416

Figure 1-16: Select Hardware Target

7. In the Open Hardware Target Summary window, click **Finish**. The wizard closes and the Vivado Design Suite opens the hardware target.
8. A dialog to auto-detect the I/O links for the IBERT cores is displayed if the Vivado Design Suite default warnings and notifications setting has not been changed. Press **Yes** to automatically detect the links (Figure 1-17).



X15556-121416

Figure 1-17: Auto-Detect the Serial I/O Links

9. Alternatively, to view the GTH transceiver operation, click **Layout > Serial I/O Analyzer**. From the top of the Hardware Manager window, select **Auto-Detect Links** to display all available links automatically. Links can also be created manually in the Links window by right-clicking and selecting **Create Links** or by clicking the **Create Links** button (Figure 1-18).

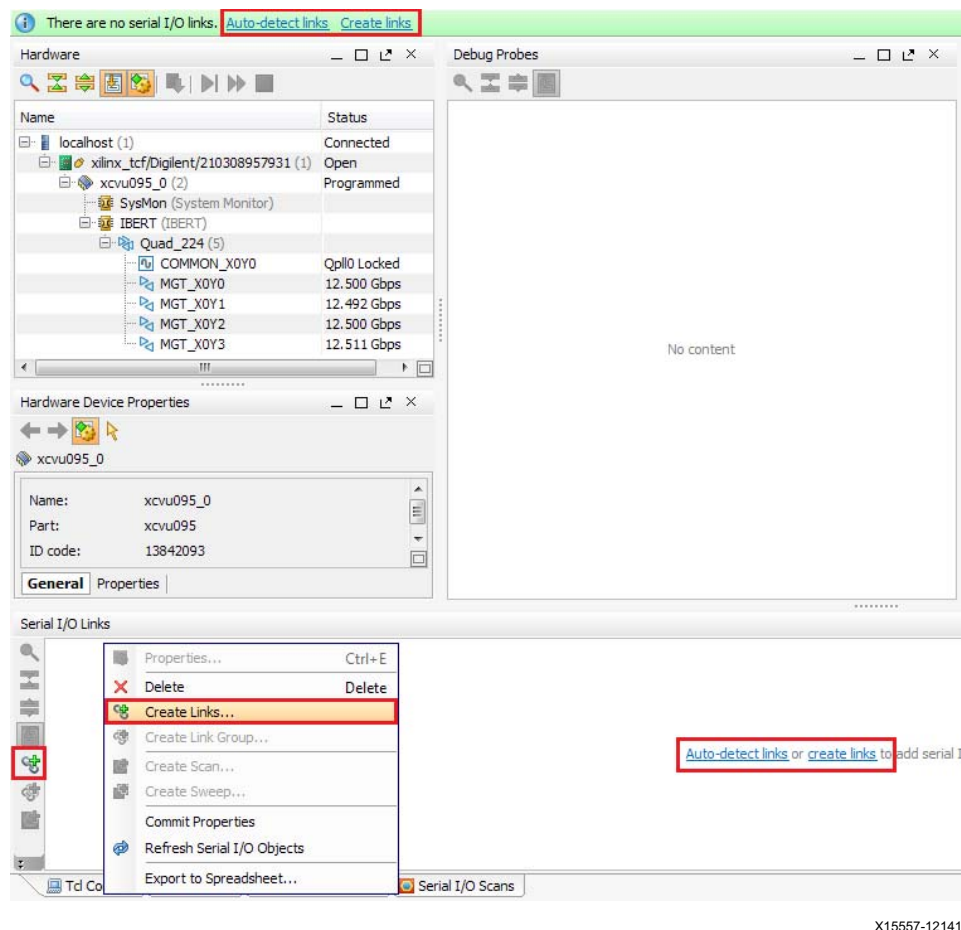
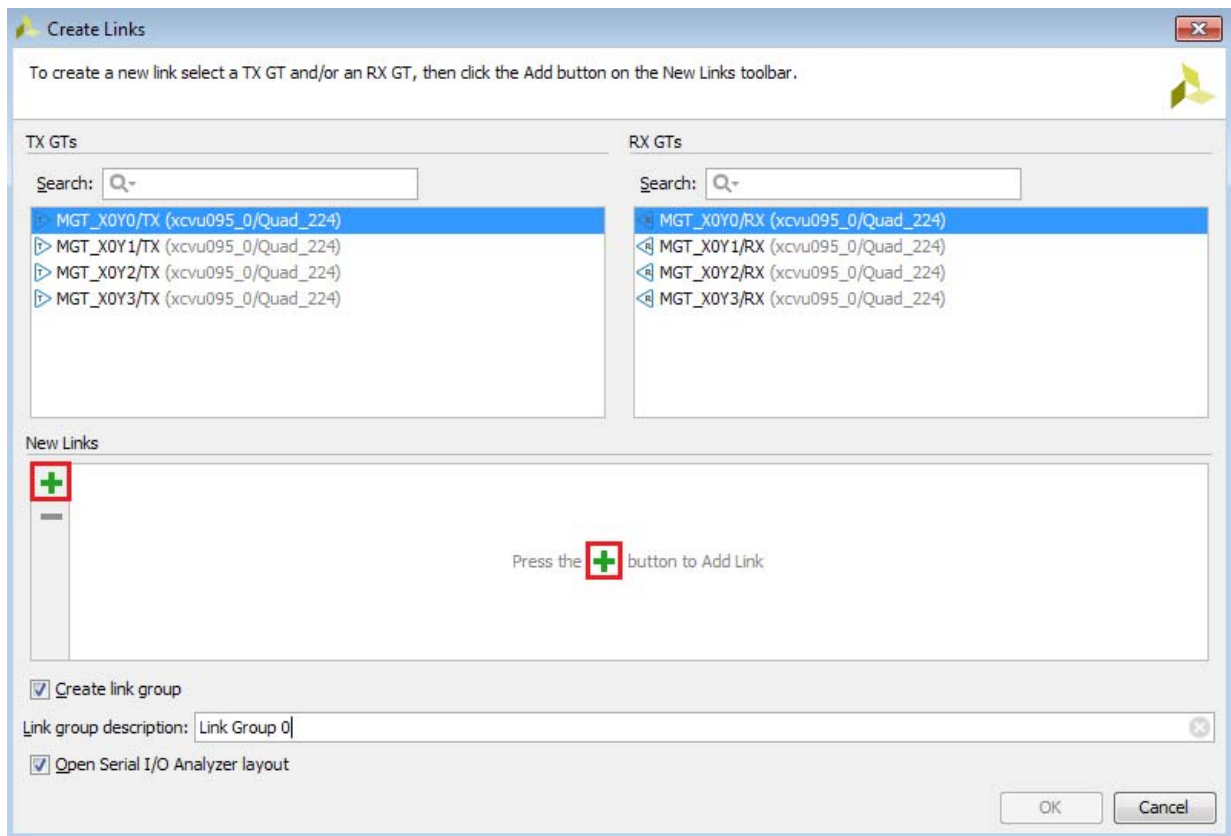


Figure 1-18: Serial I/O Analyzer – Create Links

10. If links are created manually, the Create Links window is displayed. The options in this window are used to link any TX GT to any RX GT. To create links, select the TX GT and RX GT from the two lists, then click the **Add (+)** button. For this project, connect the following links (Figure 1-19):

- MGT_X0Y0/TX (xcvu095_0/Quad_224) to MGT_X0Y0/RX (xcvu095_0/Quad_224)
- MGT_X0Y1/TX (xcvu095_0/Quad_224) to MGT_X0Y1/RX (xcvu095_0/Quad_224)
- MGT_X0Y2/TX (xcvu095_0/Quad_224) to MGT_X0Y2/RX (xcvu095_0/Quad_224)
- MGT_X0Y3/TX (xcvu095_0/Quad_224) to MGT_X0Y3/RX (xcvu095_0/Quad_224)



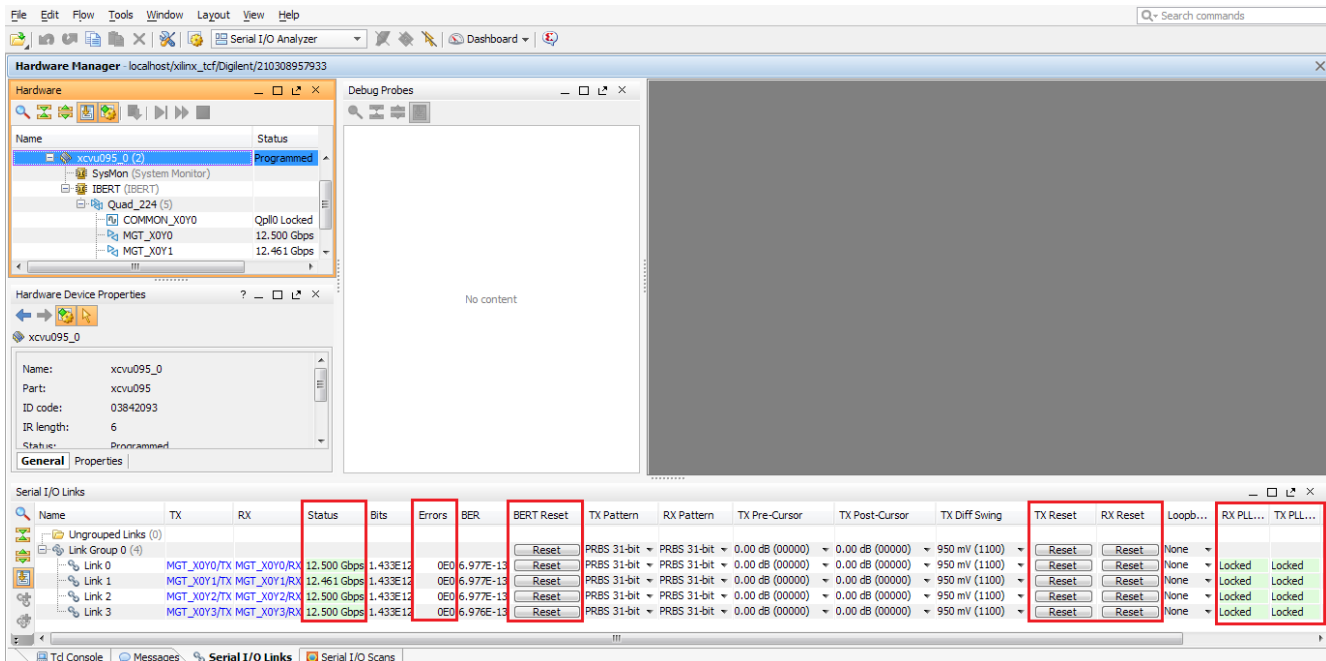
X15558-121416

Figure 1-19: Create Links Window

Viewing GTH Transceiver Operation

After completing [step 10, page 23](#) in [Setting Up the Vivado Design Suite](#), the IBERT demonstration is configured and running. The status and test settings are displayed on the Links tab in the Links window shown in [Figure 1-20](#).

Review the line rate and RX bit error count. The line rate for all four GTH transceivers is 12.5 Gb/s (see MGT Link Status in [Figure 1-20](#)). Verify that there are no bit errors.



X15559-121416

Figure 1-20: Serial I/O Analyzer Links

In Case of RX Bit Errors

If there are initial bit errors after linking, or as a result of changing the TX or RX pattern, click the respective **BERT Reset** button to zero the count.

If the **MGT Link Status** shows No Link for one or more transceivers:

- Make sure the blue elastomer seal is connected to the bottom of the Bulls Eye cable and the cable is firmly connected and flush on the board.
- Increase the TX differential swing of the transceiver (to compensate for any loss due to PCB process variation).
- Click the respective **TX Reset** button followed by **BERT Reset**.

Additional information on the Vivado Design Suite and IBERT core can be found in *Vivado Design Suite User Guide: Programming and Debugging* (UG908) [\[Ref 5\]](#) and in *LogiCORE IP Integrated Bit Error Ratio Tester (IBERT) for 7 Series GTX Transceivers: Product Guide for Vivado Design Suite* (PG132) [\[Ref 7\]](#).

Closing the IBERT Demonstration

To stop the IBERT demonstration:

1. Close the Vivado Design Suite by selecting **File > Exit**.
2. Place the main power switch SW1 in the OFF position.

Running the GTY IBERT Demonstration

The GTY IBERT demonstration operates one GTY Quad at a time. This section describes how to test GTY Quad 124. The remaining GTY Quads can be tested following a similar series of steps.

Connecting the GTY Transceivers and Reference Clocks

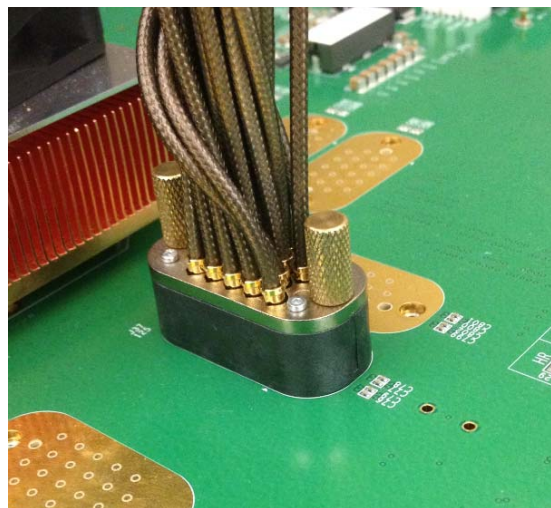
Review [Figure 1-1](#) for the location of the GTY transceiver Quads on the VCU1287 board.

All GTY transceiver pins and reference clock pins are routed from the FPGA to a connector pad that interfaces with Samtec Bulls Eye connectors. Review [Figure 1-2](#) for the pinout of the MGT Bulls Eye connector pad.

Attach the GTY Quad Connector

Before connecting the Bulls Eye cable assembly to the board, firmly secure the blue elastomer seal provided with the cable assembly to the bottom of the connector housing if it is not already inserted (see [Figure 1-4](#)).

Attach the Samtec Bulls Eye connector to GTY Quad 124 ([Figure 1-21](#)), aligning the two indexing pins on the bottom of the connector with the guide holes on the board. Hold the connector flush with the board and fasten it by tightening the two captive screws.



X15560-121416

Figure 1-21: Bulls Eye Connector Attached to Quad 124

GTY Transceiver Clock Connections

Refer to [Figure 1-2](#) to identify the P and N coax cables that are connected to the CLK0 reference clock inputs. Connect these cables to the SuperClock-2 module as follows:

- CLK0_P coax cable → SMA connector J7 (CLKOUT1_P) on the SuperClock-2 module
- CLK0_N coax cable → SMA connector J8 (CLKOUT1_N) on the SuperClock-2 module

Note: Any one of the five differential outputs from the SuperClock-2 module can be used to source the GTY reference clock. CLKOUT1_P and CLKOUT1_N are used here as an example.

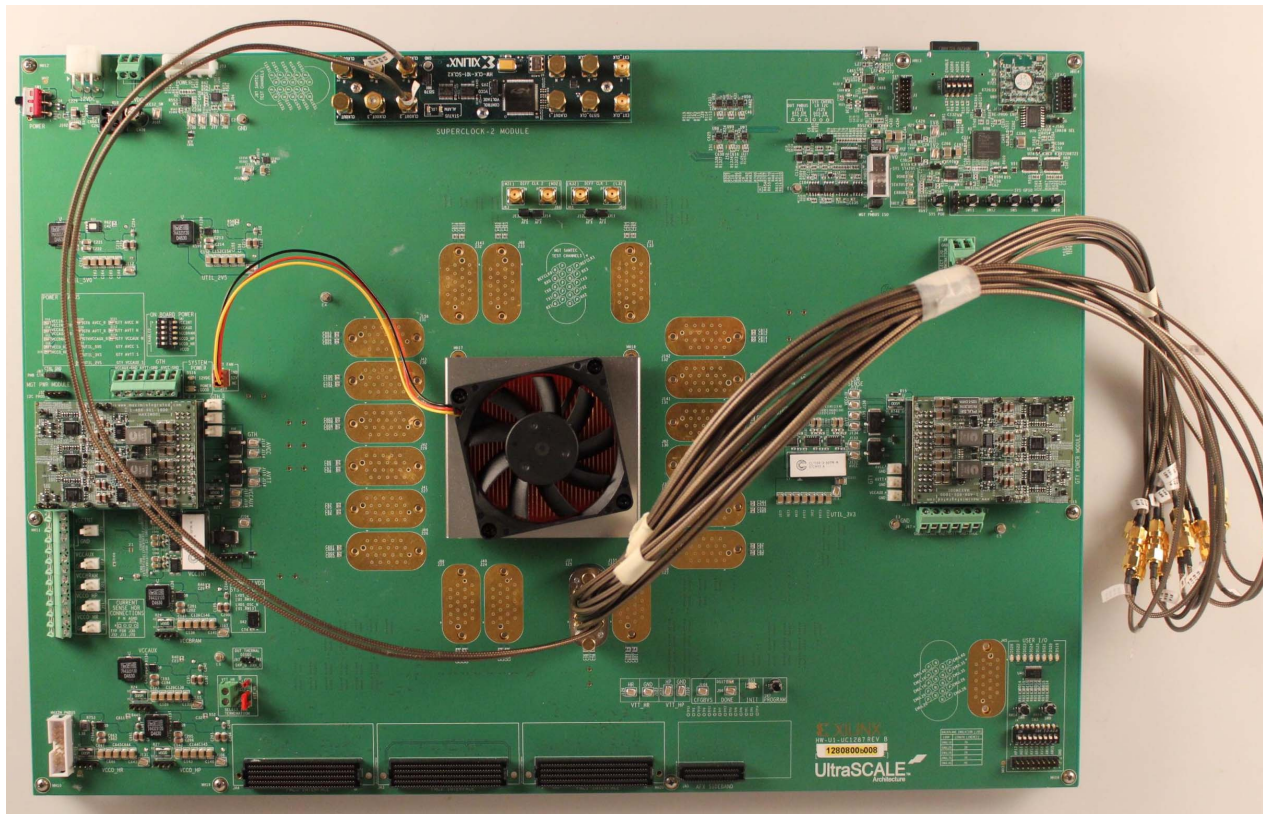
GTY TX/RX Loopback Connections

Refer to [Figure 1-2](#) to identify the P and N coax cables that are connected to the four receivers (RX0, RX1, RX2, and RX3) and the four transmitters (TX0, TX1, TX2, and TX3). Use eight SMA female-to-female (F-F) adapters ([Figure 1-6](#)) to connect the transmit and receive cables as shown in [Figure 1-7](#):

- TX0_P → SMA F-F Adapter → RX0_P
- TX0_N → SMA F-F Adapter → RX0_N
- TX1_P → SMA F-F Adapter → RX1_P
- TX1_N → SMA F-F Adapter → RX1_N
- TX2_P → SMA F-F Adapter → RX2_P
- TX2_N → SMA F-F Adapter → RX2_N
- TX3_P → SMA F-F Adapter → RX3_P
- TX3_N → SMA F-F Adapter → RX3_N

Note: To ensure good connectivity, it is recommended that the adapters be secured with a wrench; however, do not over tighten the SMAs.

Figure 1-22 shows the VCU1287 board with the cable connections required for the Quad 124 GTY IBERT demonstration.



X15561-121416

Figure 1-22: Cable Connections for Quad 124 GTY IBERT Demonstration

Starting the SuperClock-2 Module

The SuperClock-2 module provides LVDS clock outputs for the GTH and GTY transceivers reference clock in the IBERT demonstration. For both of the GTH and GTY IBERT demonstrations, the output clock frequency is preset to 125.00 MHz. See the description for [Starting the SuperClock-2 Module, page 13](#), for more details.

Configuring the FPGA

Similar to the GTH IBERT example, the VCU1287 board can be configured using the onboard Xilinx XC7Z010CLG225 Zynq-7000APSoC System Integrated Configuration Engine (SystemICE) in 8-bit SMAP configuration mode. Or the FPGA can be configured through the Vivado Design Suite using the *.bit files available on the SD card and online (as collection rdf0368-vcu1287-ibert-2016-4.zip) at the [Virtex UltraScale FPGA VCU1287 Characterization Kit documentation](#) website.

Review *UltraScale Architecture Configuration User Guide* (UG570) [Ref 4] for additional information about the UltraScale device configuration.

1. Insert the SD card provided with the VCU1287 board into the SD card connector located on the bottom-side (upper-right corner) of the VCU1287 board.
2. From the main **System Controller** menu, select option (7) to access the UltraScale FPGA configuration options.

VCU1287 System Controller v1.0

- Main Menu -

1. Set Programmable Clocks
2. Get Power System (PMBUS) Voltages
3. Get Power Monitoring Data (INA226)
4. Adjust FPGA Mezzanine Card (FMC) Settings
5. Get GPIO Data
6. Get EEPROM Data
- 7. Configure UltraScale FPGA**

Select an option

3. Select option (1) to configure the FPGA from the SD card.

VCU1287 System Controller v1.0

- CONFIG Menu -

- 1. Configure UltraScale FPGA from SD Card**
0. Return to Main Menu

Select an option

4. Select option (0) to configure the FPGA with the Quad 124 IBERT example design. Press **Enter** and review the terminal for configuration progress.

Enter a Bitstream number (0-15):

0

Info : xilinx.sys opened

Info : Opening rev_1/set0/config.def

Info : Configuration definition file "rev_1/set0/config.def" opened

Info : Clock divider is set to 2

Info : Configuration clock frequency is 25MHz

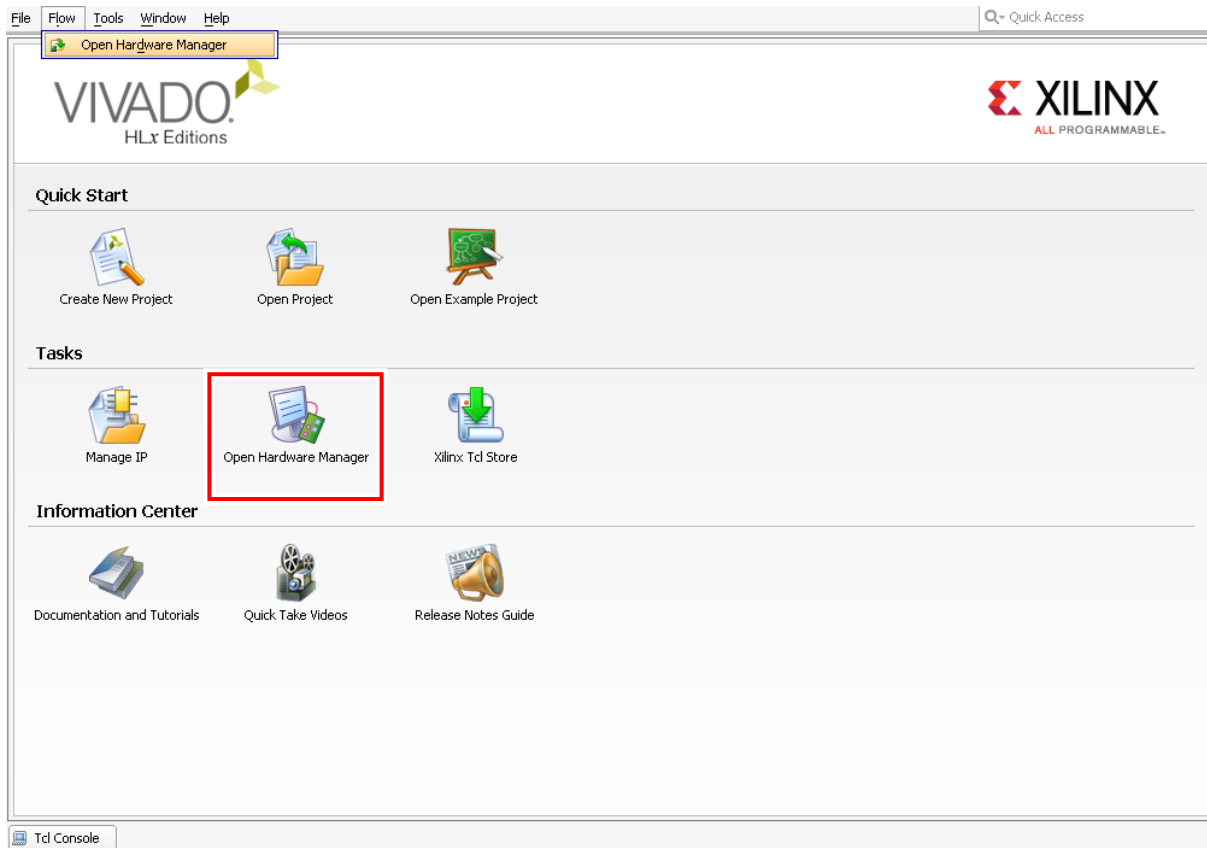
Info : Bitfile "rev_1/set0/vu95Q124.bit" opened

...10%...20%...30%...40%...50%...60%...70%...80%...90%...100%

Configuration completed successfully

Setting Up the Vivado Design Suite

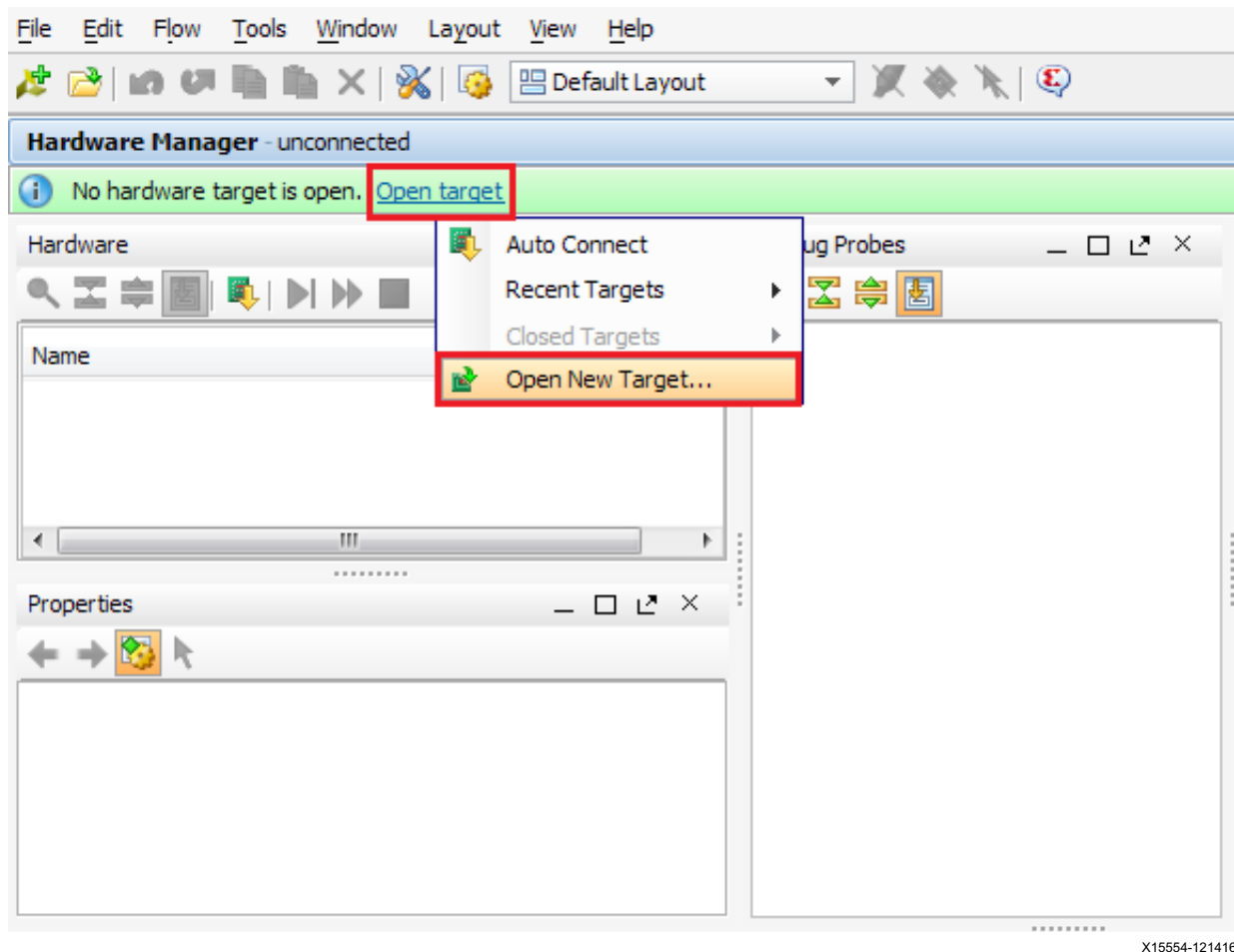
1. Connect the host computer to the VCU1287 board using the second standard-A plug to micro-B plug USB cable. The standard-A plug connects to a USB port on the host computer and the micro-B plug connects to J165, the Digilent USB JTAG configuration port on the VCU1287 board (Figure 1-13).
2. Start the Vivado Design Suite on the host computer and click **Flow > Open Hardware Manager** (highlighted in Figure 1-23).



X15553-121416

Figure 1-23: Vivado Design Suite, Open Hardware Manager

3. In the Hardware Manager window (Figure 1-24), click **Open New Target**.

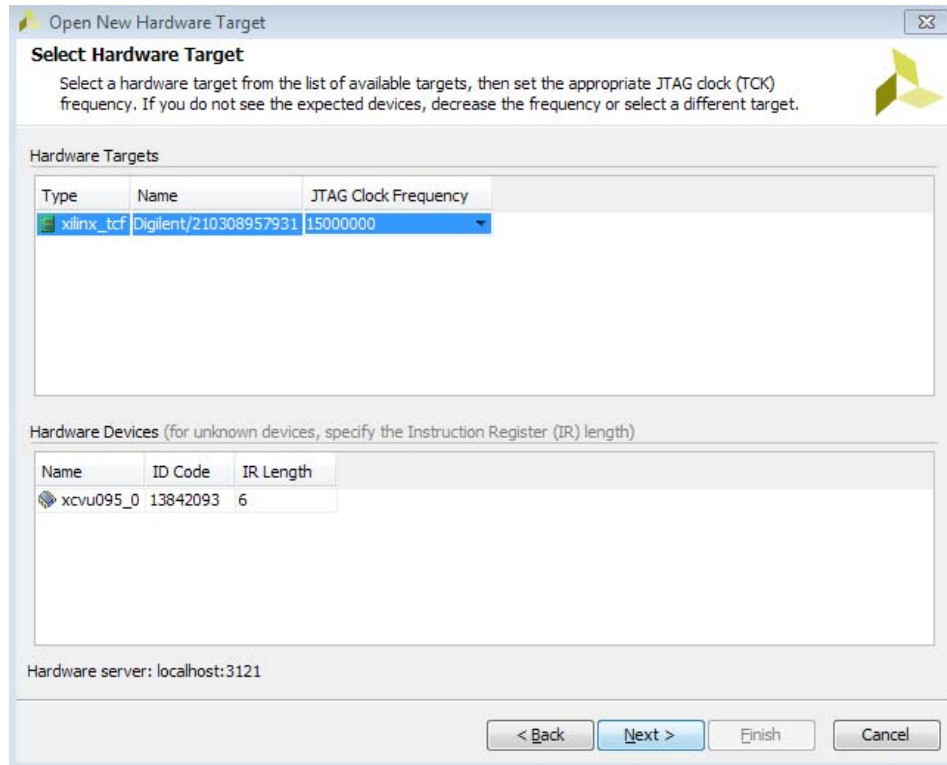


X15554-121416

Figure 1-24: Open a New Hardware Manager

4. An Open Hardware Target wizard opens. Click **Next** in the first window.
5. In the Hardware Server Settings window, select Local server (target is on local machine). Click Next.

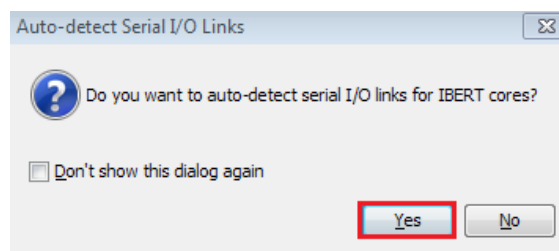
6. In the Select Hardware Target window, the xilinx_tcf cable appears under Hardware Targets, and the JTAG chain contents of the selected cable appear under Hardware Devices (Figure 1-25). Select the **xilinx_tcf_Digilent** target and keep the JTAG Clock Frequency at the default value (**15 MHz**), click **Next**.



X15555-121416

Figure 1-25: Select Hardware Target

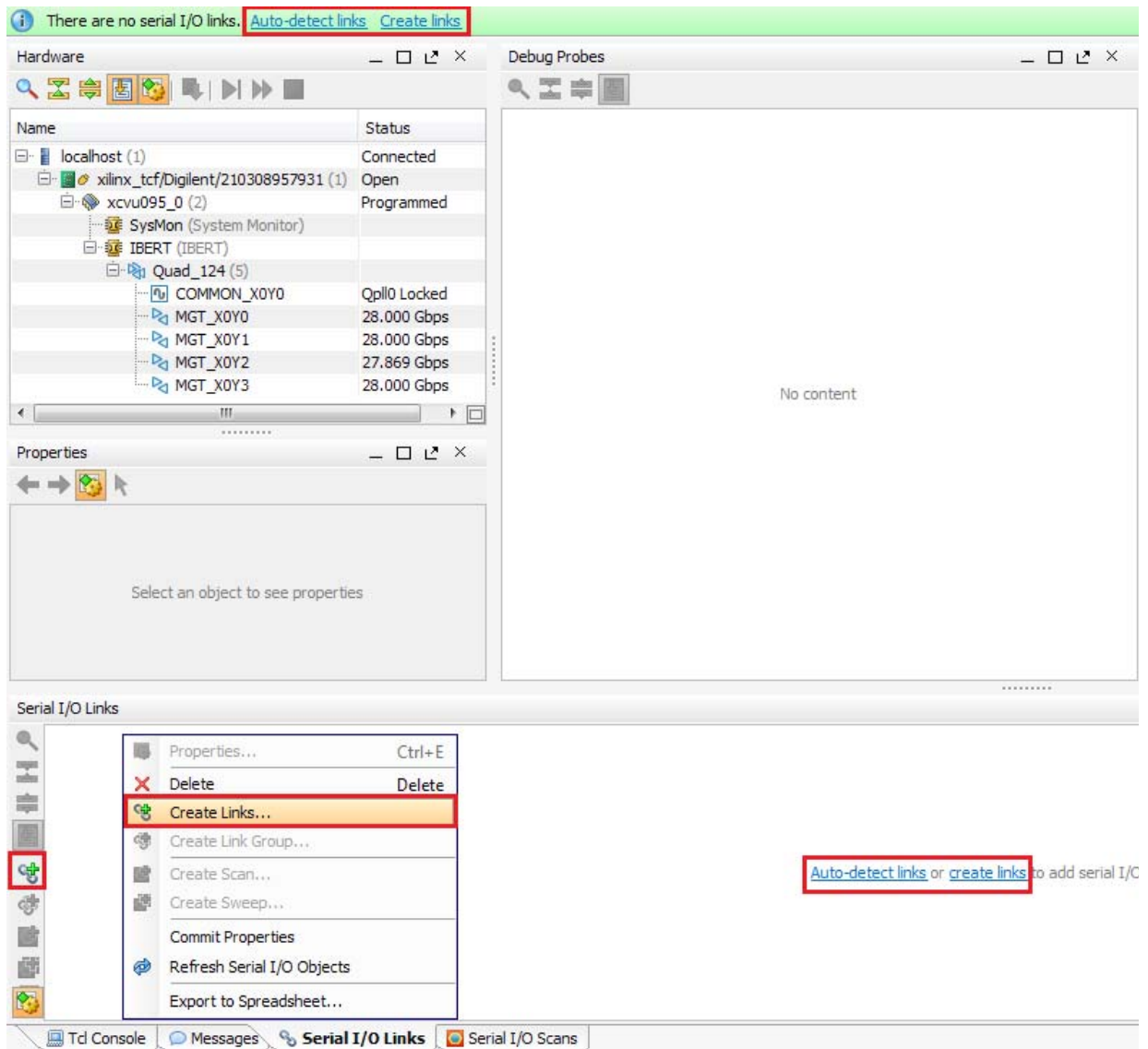
7. In the Open Hardware Target Summary window, click **Finish**. The wizard closes and the Vivado Design Suite opens the hardware target.
8. A dialog to auto-detect the I/O links for the IBERT core will be displayed if the Vivado Design Suite default warnings and notification have not been changed. Press **Yes** to automatically detect the links (Figure 1-26).



X15556-121416

Figure 1-26: Auto-detect the Serial I/O Links

9. Alternatively, to view the GTY transceiver operation, click **Layout > Serial I/O Analyzer**. From the top of the Hardware Manager window, select **Auto-Detect Links** to display all available links automatically. Links can also be created manually in the Links window by right-clicking and selecting **Create Links**, or by clicking the **Create Links** button (Figure 1-27).



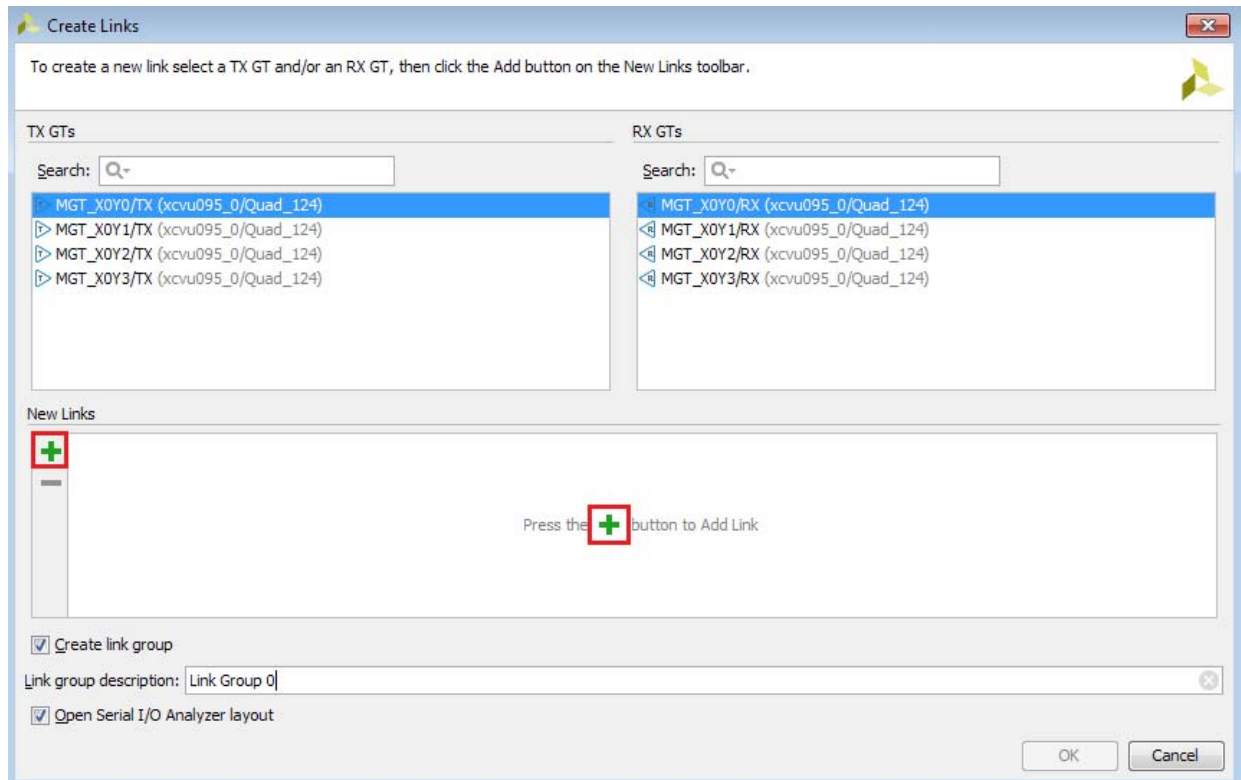
X15563-121416

Figure 1-27: Serial I/O Analyzer - Create Links

10. If links are created manually, the Create Links window is displayed. The options in this window are used to link any TX GT to any RX GT. To create links, select the TX GT and RX

GT from the two lists, then click the **Add (+)** button. For this project, connect the following links (Figure 1-28):

- MGT_X0Y0/TX (xcvu095_0/Quad_124) to MGT_X0Y0/RX (xcvu095_0/Quad_124)
- MGT_X0Y1/TX (xcvu095_0/Quad_124) to MGT_X0Y1/RX (xcvu095_0/Quad_124)
- MGT_X0Y2/TX (xcvu095_0/Quad_124) to MGT_X0Y2/RX (xcvu095_0/Quad_124)
- MGT_X0Y3/TX (xcvu095_0/Quad_124) to MGT_X0Y3/RX (xcvu095_0/Quad_124)



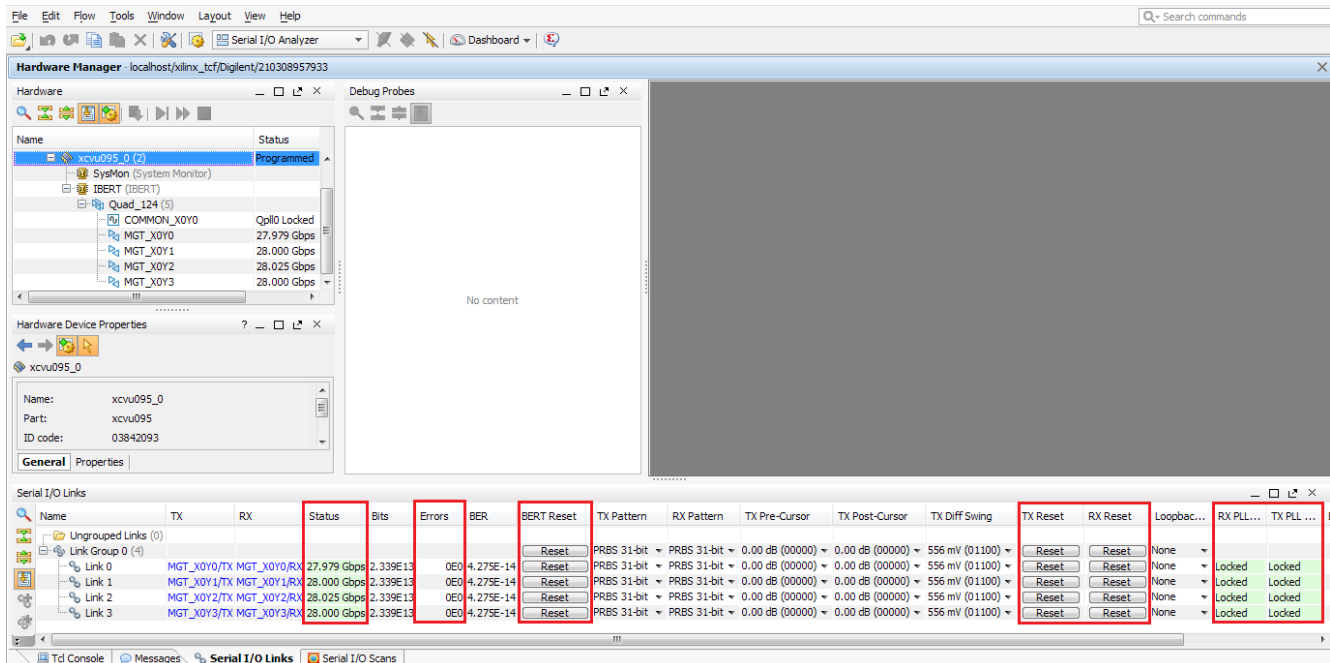
X15564-121416

Figure 1-28: Create Links Window

Viewing GTY Transceiver Operation

After completing step 10 above page x in [Setting Up the Vivado Design Suite, page 18](#), the IBERT demonstration is configured and running. The status and test settings are displayed on the Links tab in the Links window shown in [Figure 1-29](#).

Review the line rate and RX bit error count. The line rate for all four GTY transceivers is 28.0 Gb/s (see MGT Link Status in [Figure 1-29](#)). Verify that there are no bit errors.



X15565-121416

Figure 1-29: Serial I/O Analyzer Links

In Case of RX Bit Errors

If there are initial bit errors after linking, or as a result of changing the TX or RX pattern, click the respective **BERT Reset** button to zero the count.

If the MGT Link Status shows No Link for one or more transceivers:

- Make sure the blue elastomer seal is connected to the bottom of the Bulls Eye cable and the cable is firmly connected and flush on the board.
- Increase the TX differential swing of the transceiver (to compensate for any loss due to PCB process variation).
- Click the respective **TX Reset** button followed by **BERT Reset**.

Additional information on the Vivado Design Suite and IBERT core can be found in *Vivado Design Suite User Guide: Programming and Debugging* (UG908) [\[Ref 5\]](#) and in *LogiCORE IP Integrated Bit Error Ratio Tester (IBERT) for 7 Series GTX Transceivers: Product Guide for Vivado Design Suite* (PG132) [\[Ref 7\]](#).

Closing the IBERT Demonstration

To stop the IBERT demonstration:

1. Close the Vivado Design Suite by selecting **File > Exit**.
2. Place the main power switch SW1 in the off position.

Creating the IBERT Cores

Creating the GTH IBERT Core

The Vivado® Design Suite 2016.4 is required to rebuild the designs shown here.

This section provides a procedure to create a single Quad GTH IBERT core. The procedure assumes Quad 224 at 12.5 Gb/s line rate, but cores for any of the GTH Quads with any supported line rate can be created following the same series of steps.

For more details on generating IBERT cores, see the *Vivado Design Suite User Guide: Programming and Debugging* (UG908) [Ref 5].

1. Start the Vivado Design Suite.

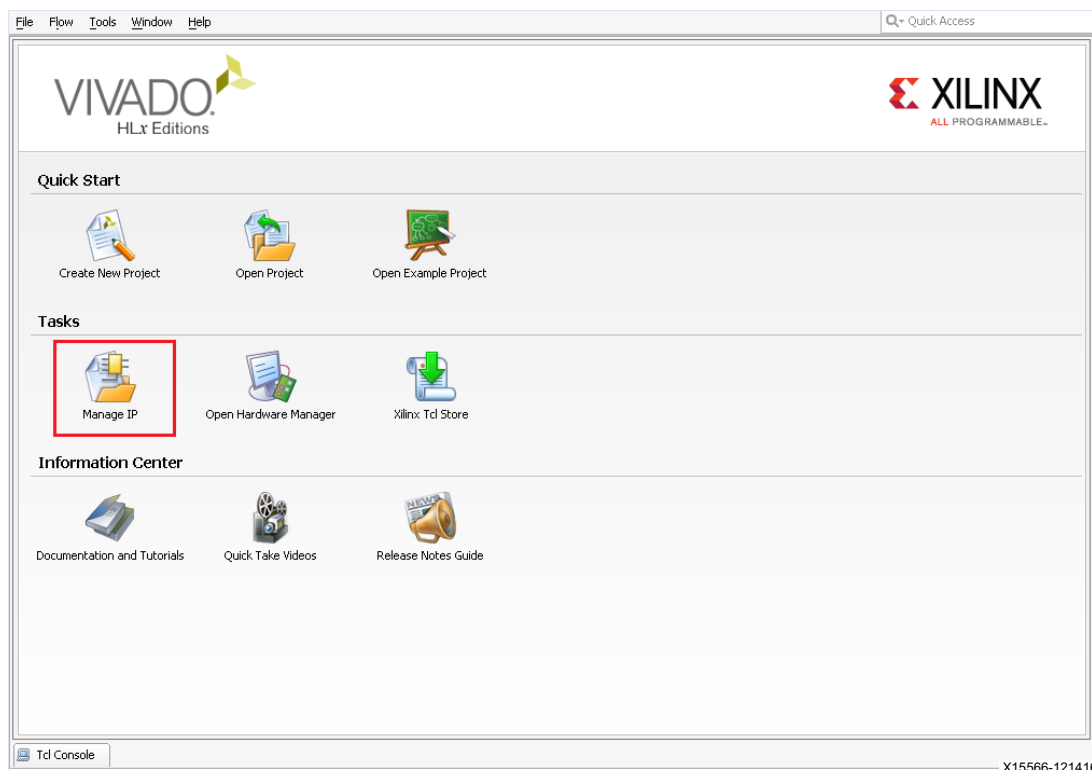
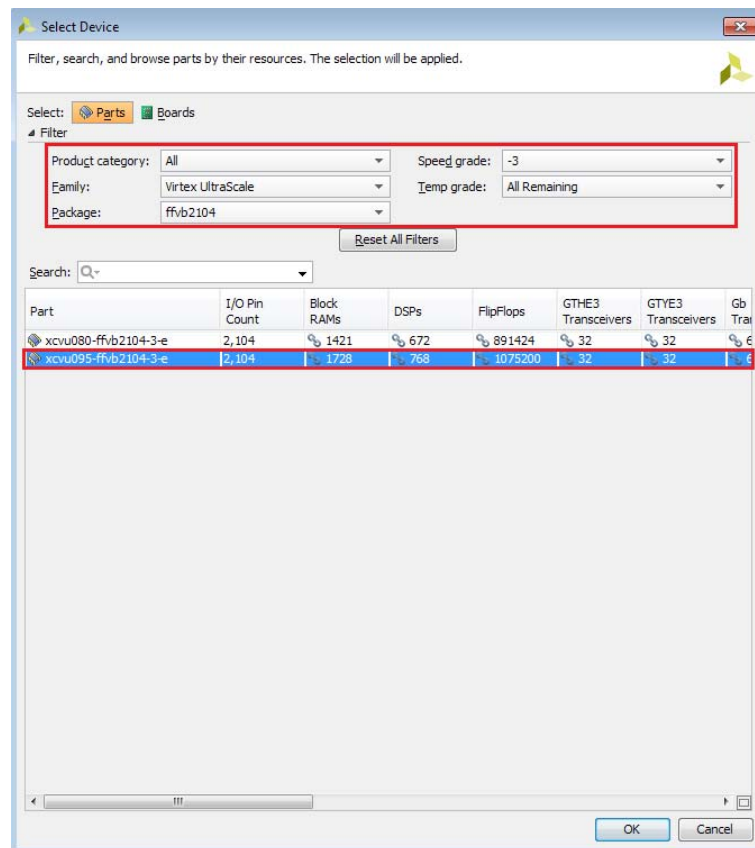


Figure 2-1: Vivado Design Suite Initial Window

2. In the Vivado Design Suite window, click **Manage IP** (highlighted in Figure 2-1) and select **New IP Location**.
3. A Create a New Customized IP Location dialog window opens (not shown), Click **Next**.
4. In the Manage IP Settings window, select a part by clicking the (...) button next to the Part field. A Select Device window displays. Use the drop-down menu items to narrow the choices. Select the **xcvu095-ffvb2104-3-e** device (see Figure 2-2). Click **OK**.

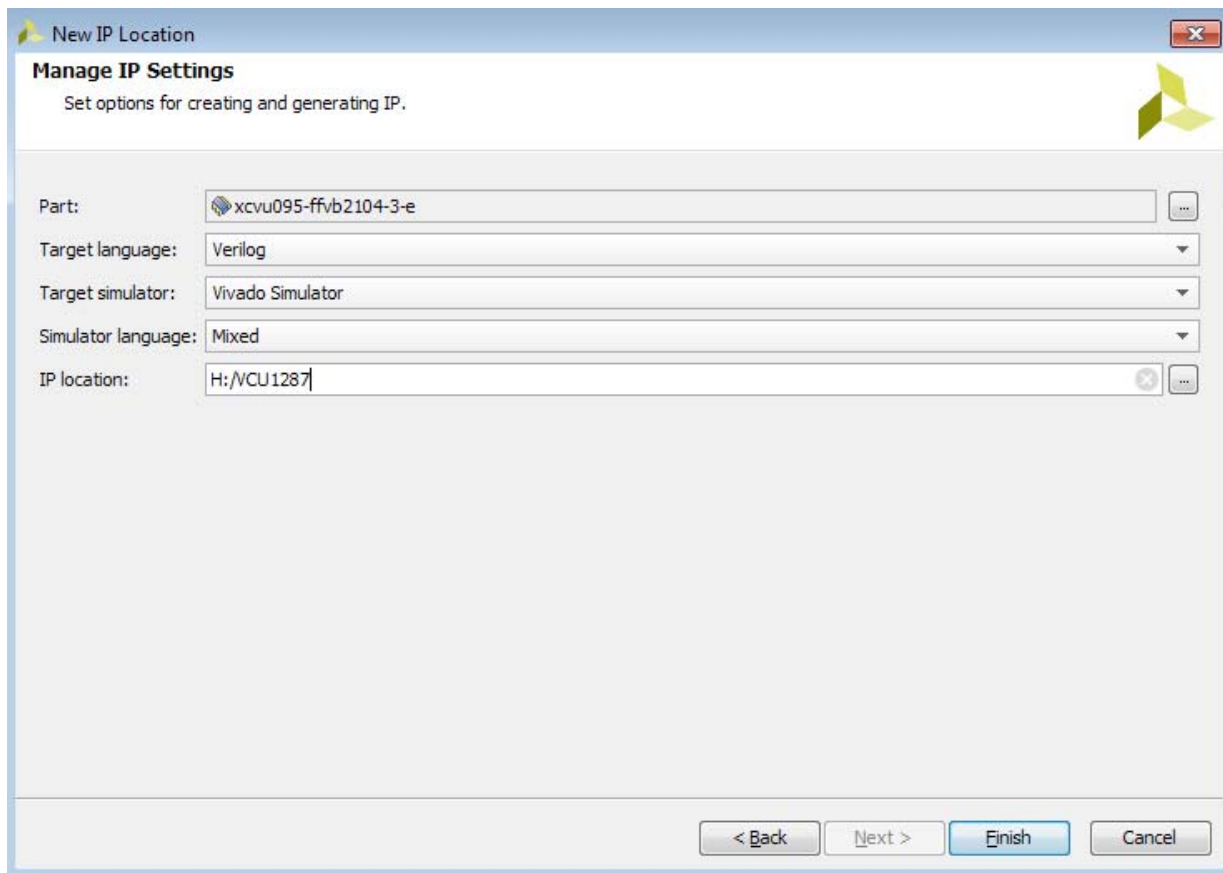


X15567-121416

Figure 2-2: Select Device

5. Back on the Manage IP Catalog window, select **Verilog** for Target language, **Vivado Simulator** for Target simulator, **Mixed** for Simulator language, and a directory to save the customized IP (Figure 2-3). Click **Finish**.

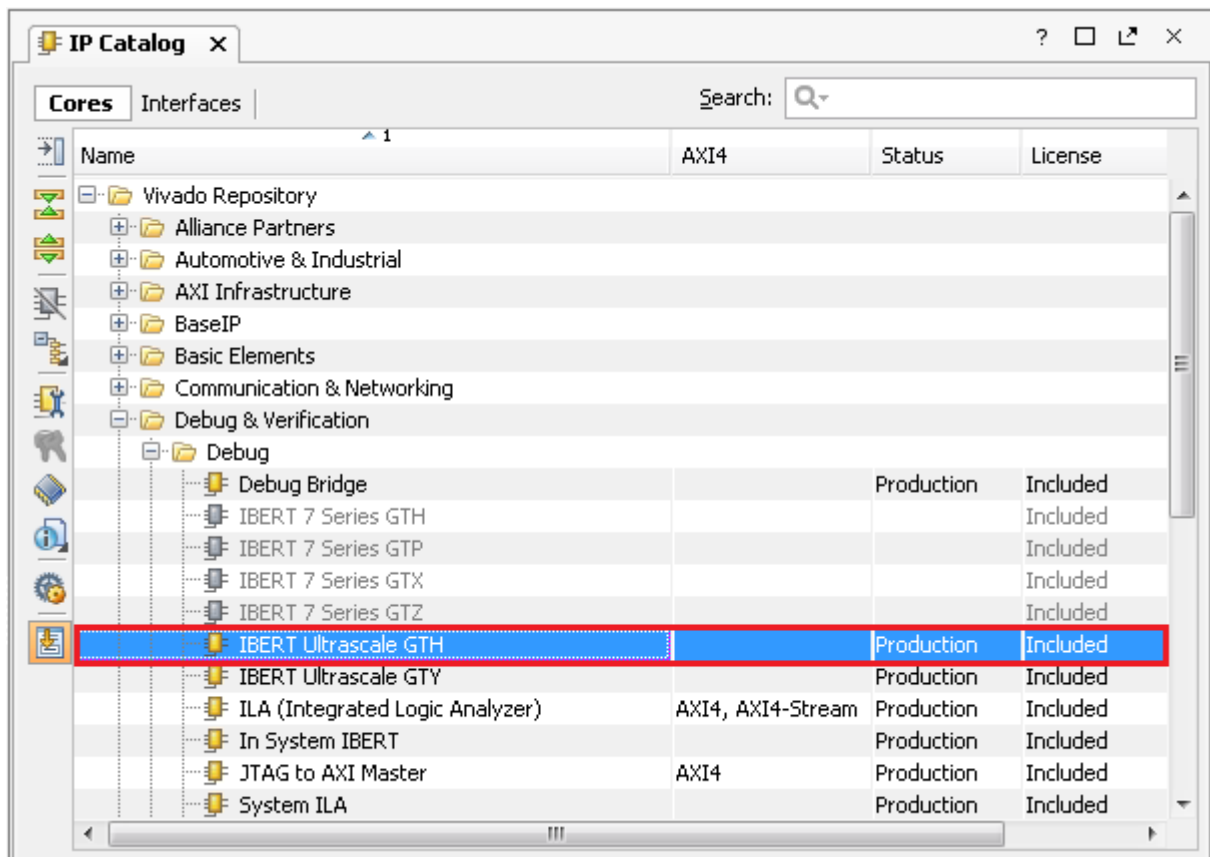
Note: Make sure the directory name does not include spaces.



X15568-121416

Figure 2-3: Manage IP Settings

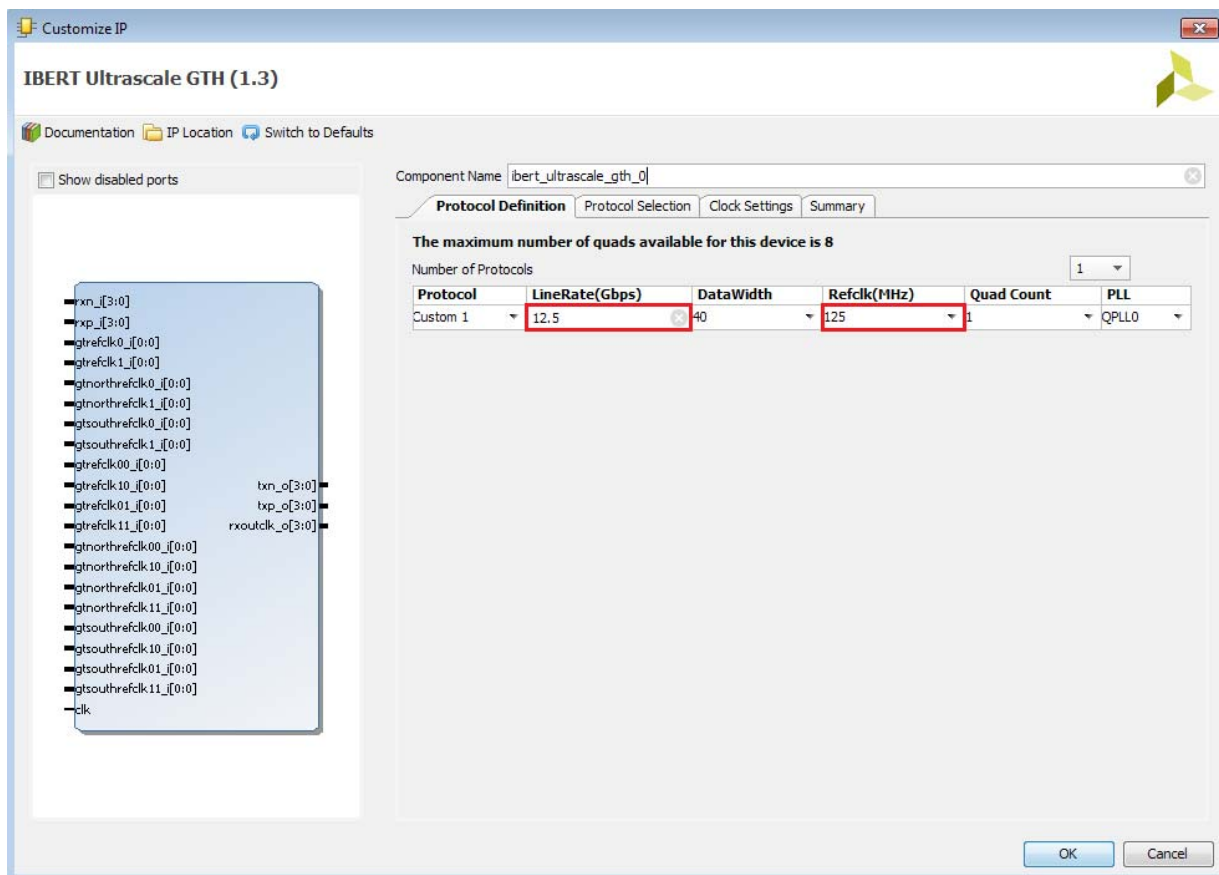
6. In the IP Catalog window, expand the Debug & Verification folder, expand the Debug folder, and double-click **IBERT UltraScale GTH** (Figure 2-4).



X15569-121416

Figure 2-4: IP Catalog

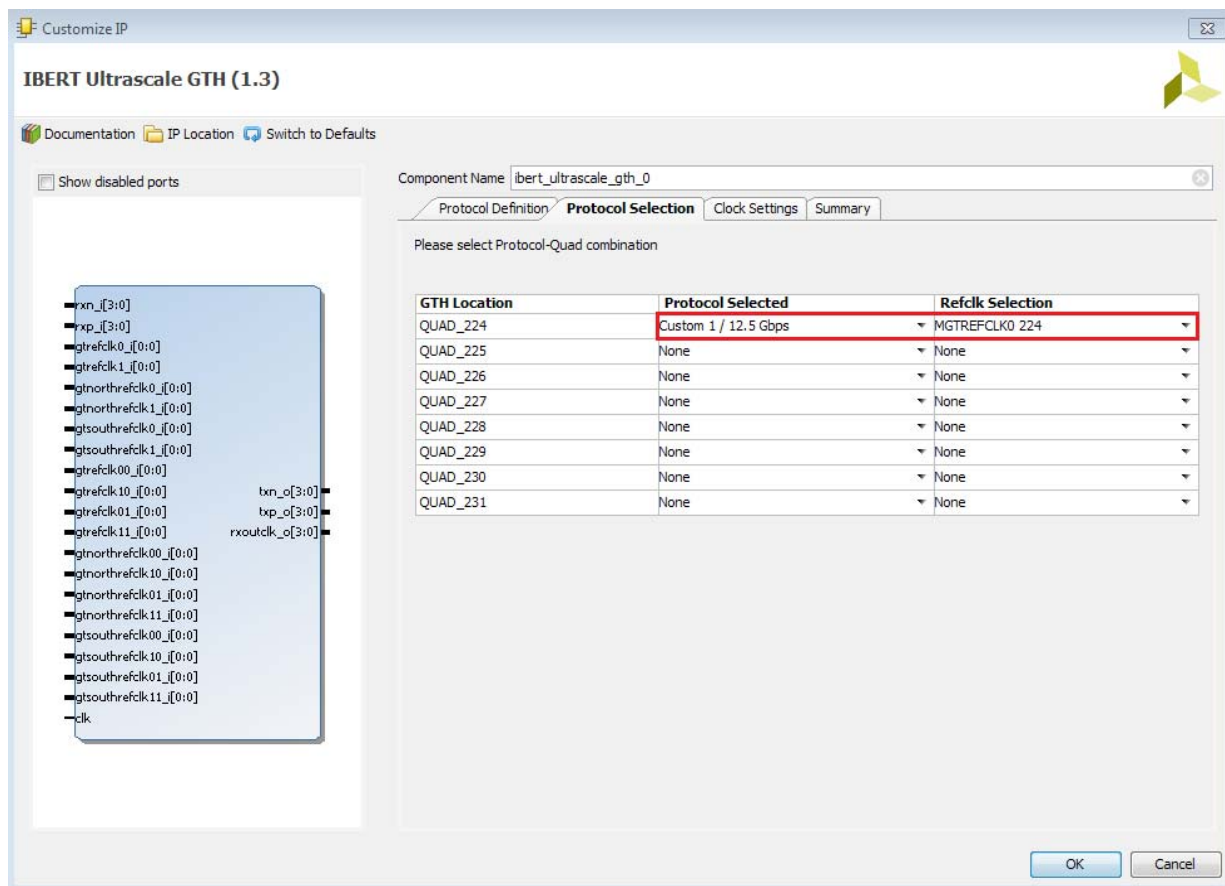
7. A Customize IP window opens. In the Protocol Definition tab, set the LineRate(Gbps) to **12.5**. Change Refclk(MHz) to **125**. Keep defaults for other fields (Figure 2-5).



X15570-121416

Figure 2-5: Customize IP – Protocol Definition

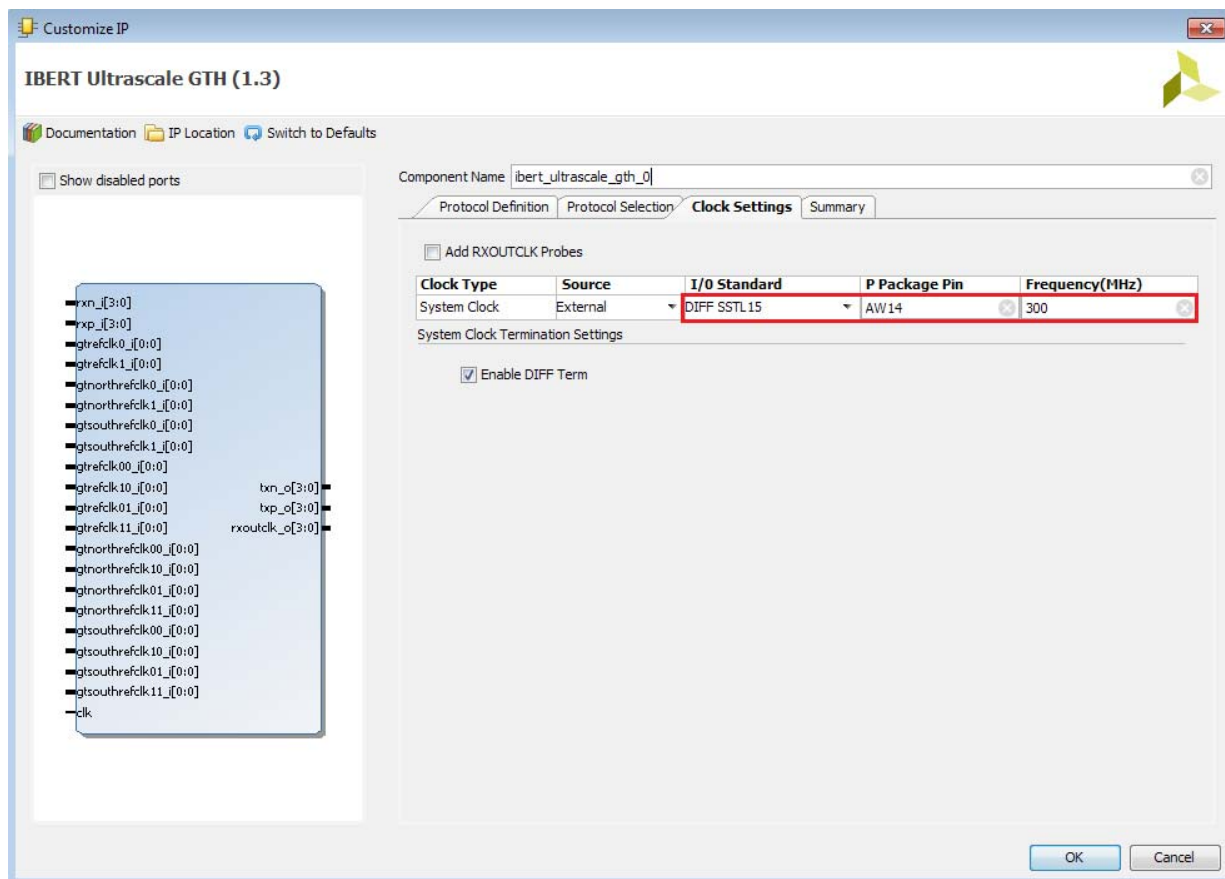
8. In the Protocol Selection tab, use the Protocol Selected drop-down menu next to QUAD_224 to select **Custom 1/12.5 Gb/s** (Figure 2-6).



X15540-121416

Figure 2-6: Customize IP – Protocol Selection

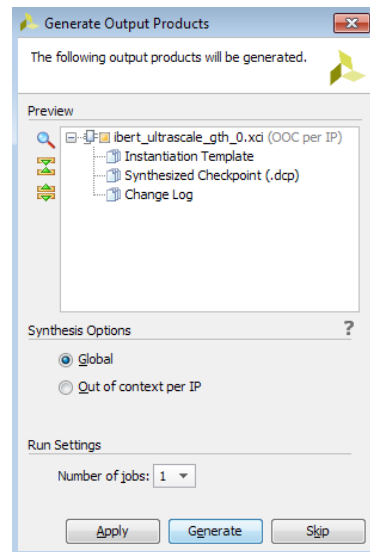
9. In the Clock Settings tab, select **DIFF SSTL15** for the I/O Standard, enter **AW14** for the P Package Pin (the FPGA pins to which the system clock is connected), and make sure the Frequency (MHz) is set to **300** (Figure 2-7).



X15571-121416

Figure 2-7: Customize IP - Clock Settings

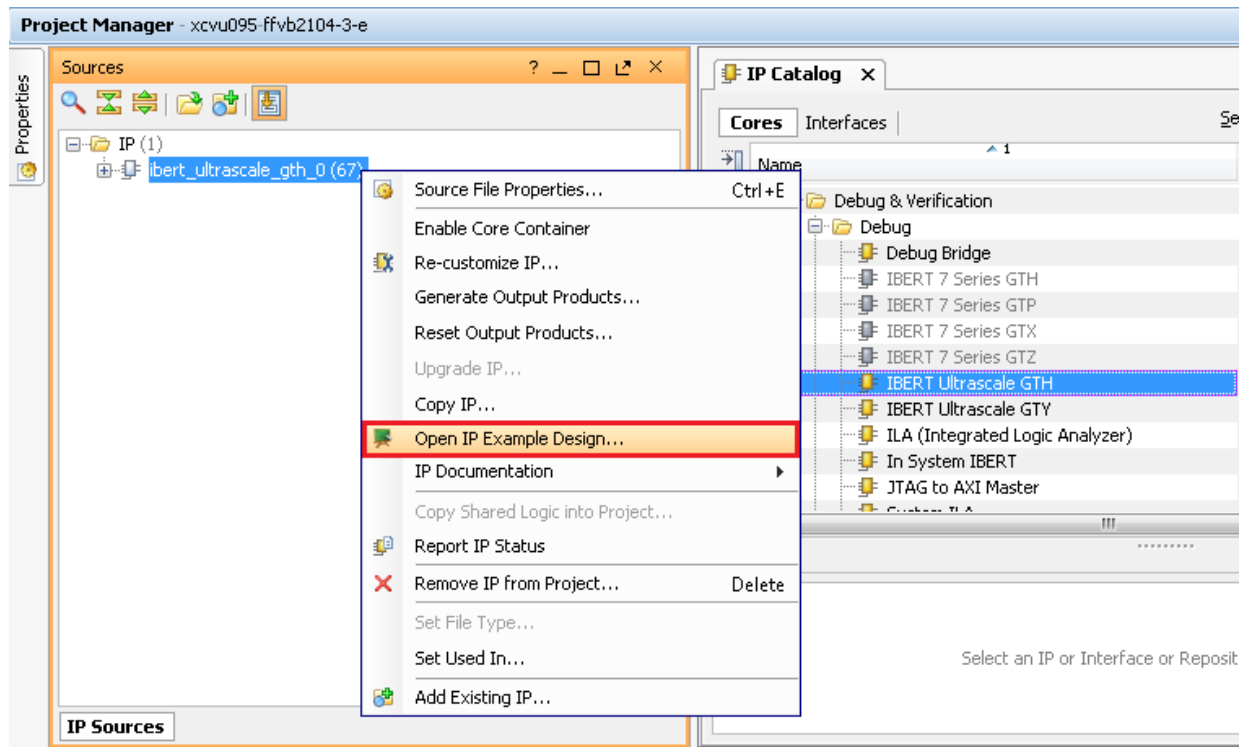
10. Click **OK**. Click **Generate** in the next window to generate the output products (Figure 2-8).



X15572-121416

Figure 2-8: Generate Output Products

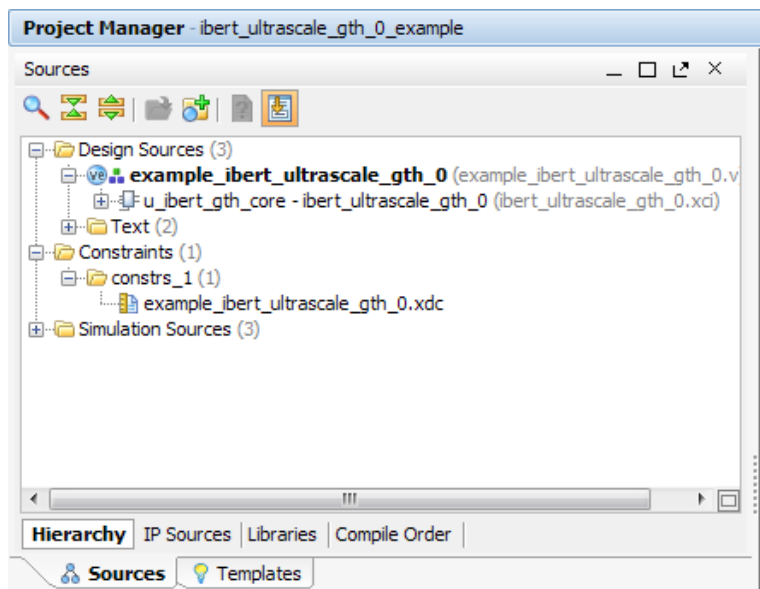
11. Back on the Manage IP Catalog window, in the Sources window, right-click the **IBERT IP** and select **Open IP Example Design** (Figure 2-9). Specify a location to save the design, click **OK**, and the design opens in a new Vivado Design Suite window.



X15573-121416

Figure 2-9: Open IP Example Design

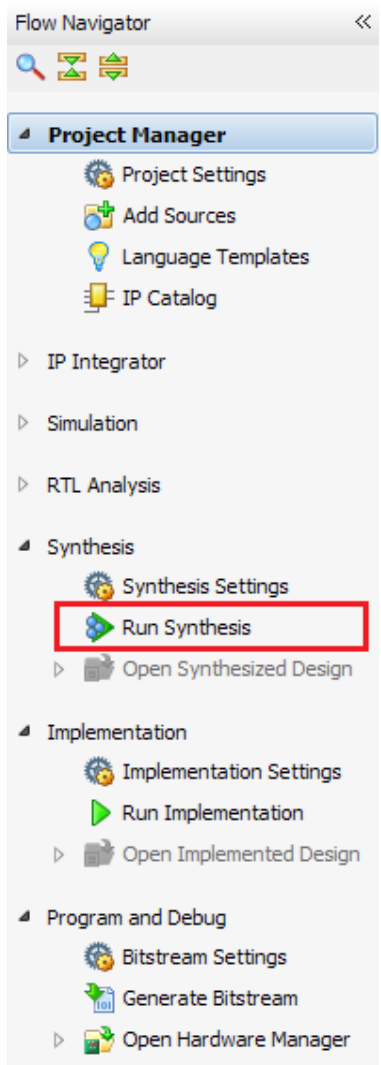
12. In the Sources window, Design Sources should now show the IBERT design example (Figure 2-10).



X15574-121416

Figure 2-10: Design Sources File Hierarchy

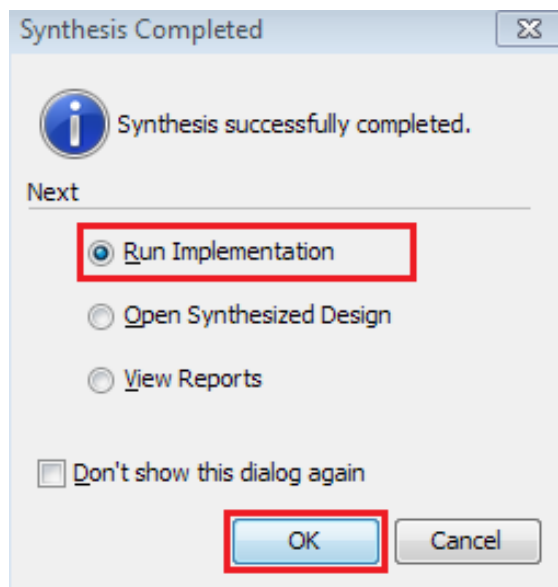
13. Click **Run Synthesis** from the Flow Navigator to synthesize the design (Figure 2-11).



X15575-121416

Figure 2-11: Run Synthesis

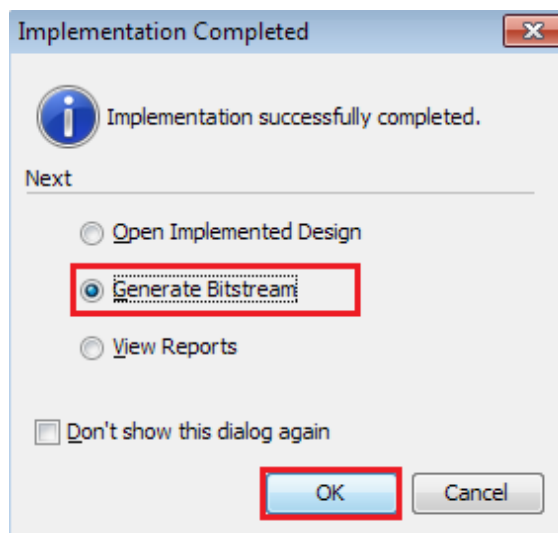
14. When the synthesis is done, a Synthesis Completed window opens. Select **Run Implementation** and click **OK** (Figure 2-12).



X15576-121416

Figure 2-12: Synthesis Completed

15. When the implementation is done, an Implementation Completed window opens. Select **Generate Bitstream** and click **OK** (Figure 2-13).



X15577-121416

Figure 2-13: Implementation Completed

16. When the Bitstream Generation Completed dialog window appears, click **Cancel** (Figure 2-14).

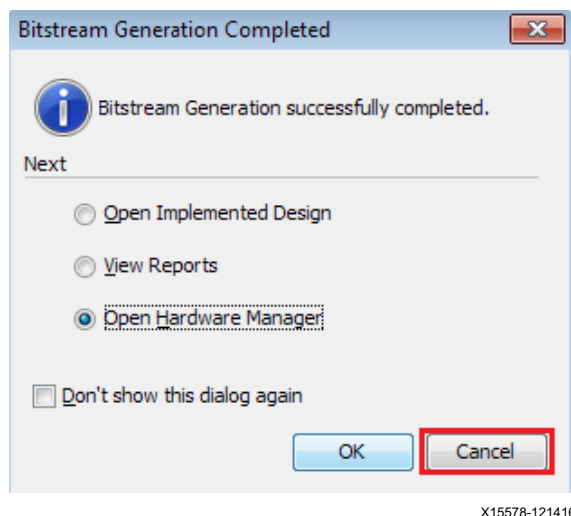


Figure 2-14: Bitstream Generation Complete

17. Navigate to the
`...\ibert_ultrascale_gth_0_example\ibert_ultrascale_gth_0_example.runs\impl_1` directory to locate the generated bitstream.

Creating the GTY IBERT Core

The Vivado Design Suite 2016.4 is required to rebuild the designs shown here.

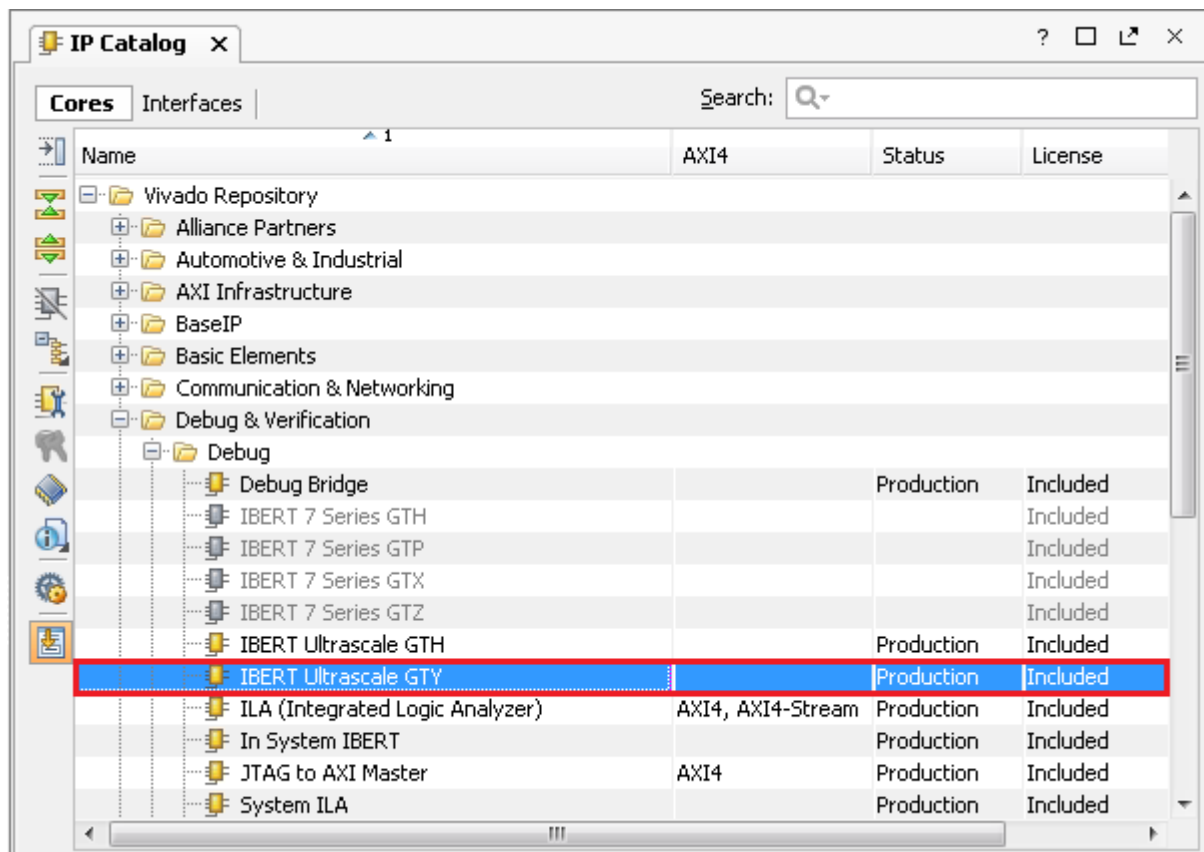
This section provides a procedure to create a single Quad GTY IBERT core. The procedure assumes Quad 124 at 28.00 Gb/s line rate, but cores for any of the GTY Quads with any supported line rate can be created following the same series of steps.

For more details on generating IBERT cores, see *Vivado Design Suite User Guide: Programming and Debugging* (UG908) [Ref 5].

1. Start the Vivado Design Suite.
2. In the Vivado Design Suite window, click **Manage IP** (highlighted in Figure 2-1) and select **New IP Location**.
3. A Create a New Customized IP Location dialog window opens. Click **Next**.
4. In the Manage IP Settings window, select a part by clicking the (...) button next to the Part field. A Select Device window displays. Use the drop-down menu items to narrow the choices. Select the **xcvu095-ffvb2104-3-e** device (Figure 2-2). Click **OK**.
5. Back on the Manage IP Catalog window, select **Verilog** for Target language, **Vivado Simulator** for Target simulator, **Mixed for Simulator language**, and a directory to save the customized IP (Figure 2-3). Click **Finish**.

Note: Make sure the directory name does not include spaces.

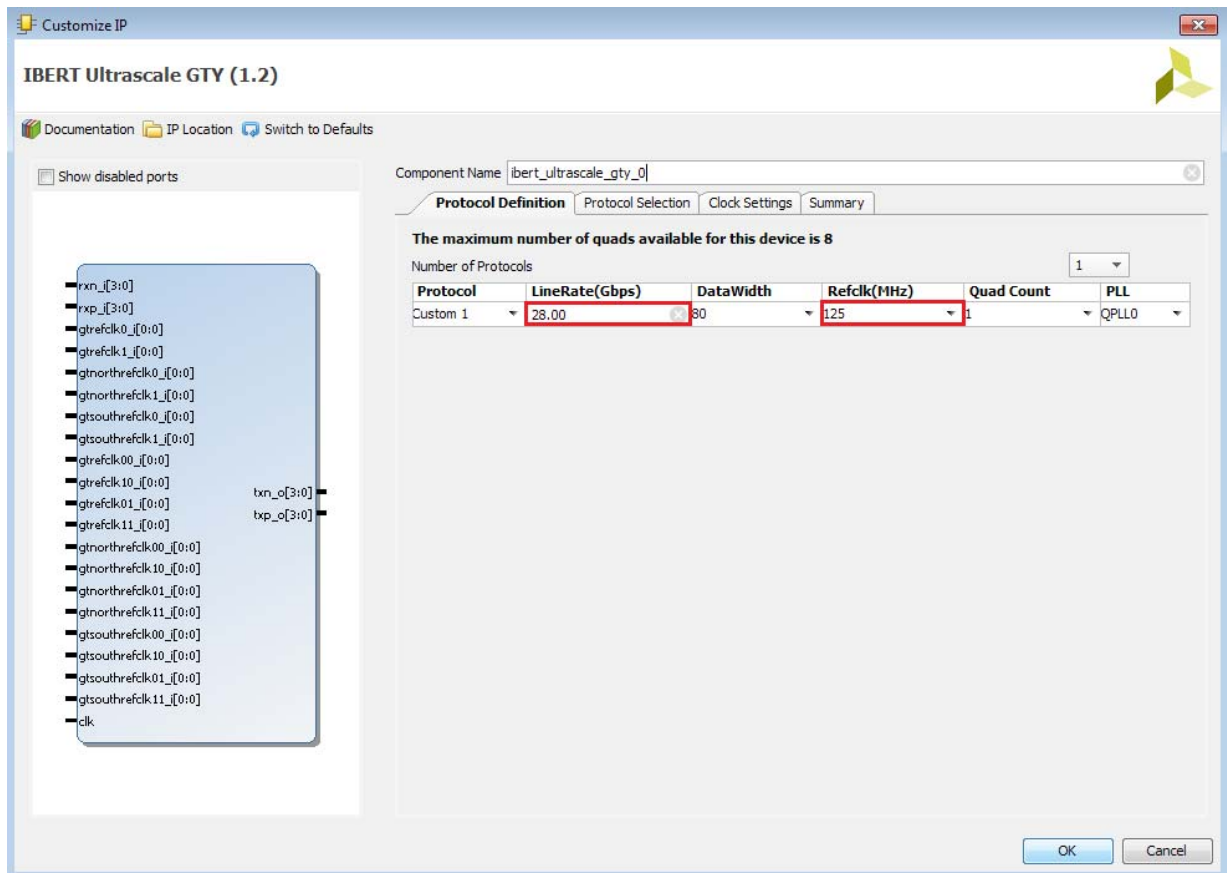
6. In the IP Catalog window, expand the Debug & Verification folder, expand the Debug folder, and double-click **IBERT UltraScale GTY** (Figure 2-15).



X15579-121416

Figure 2-15: IP Catalog

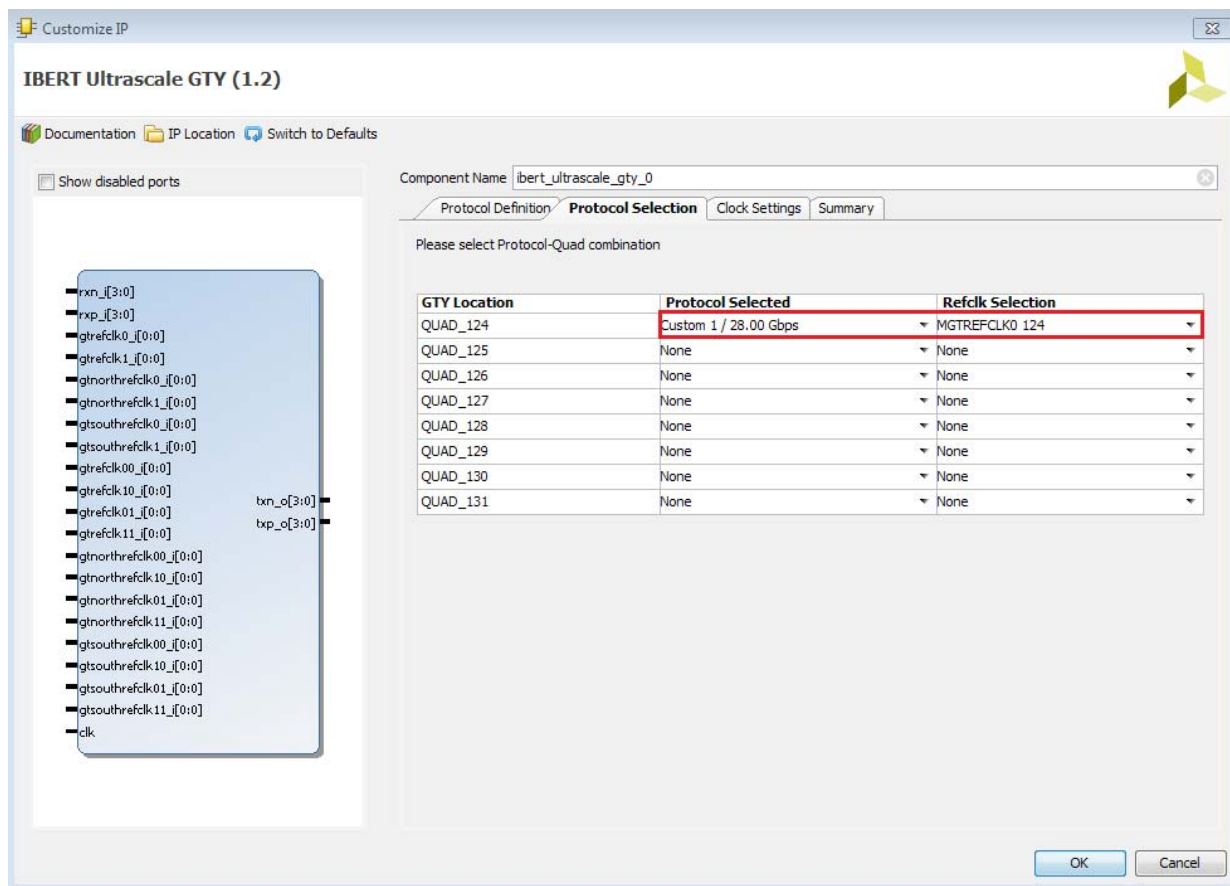
7. A Customize IP window opens. In the Protocol Definition tab, set the LineRate(Gb/s) to **28.00**. Change Refclk(MHz) to **125**. Keep defaults for the other fields (Figure 2-16).



X15580-121416

Figure 2-16: Customize IP– Protocol Definition

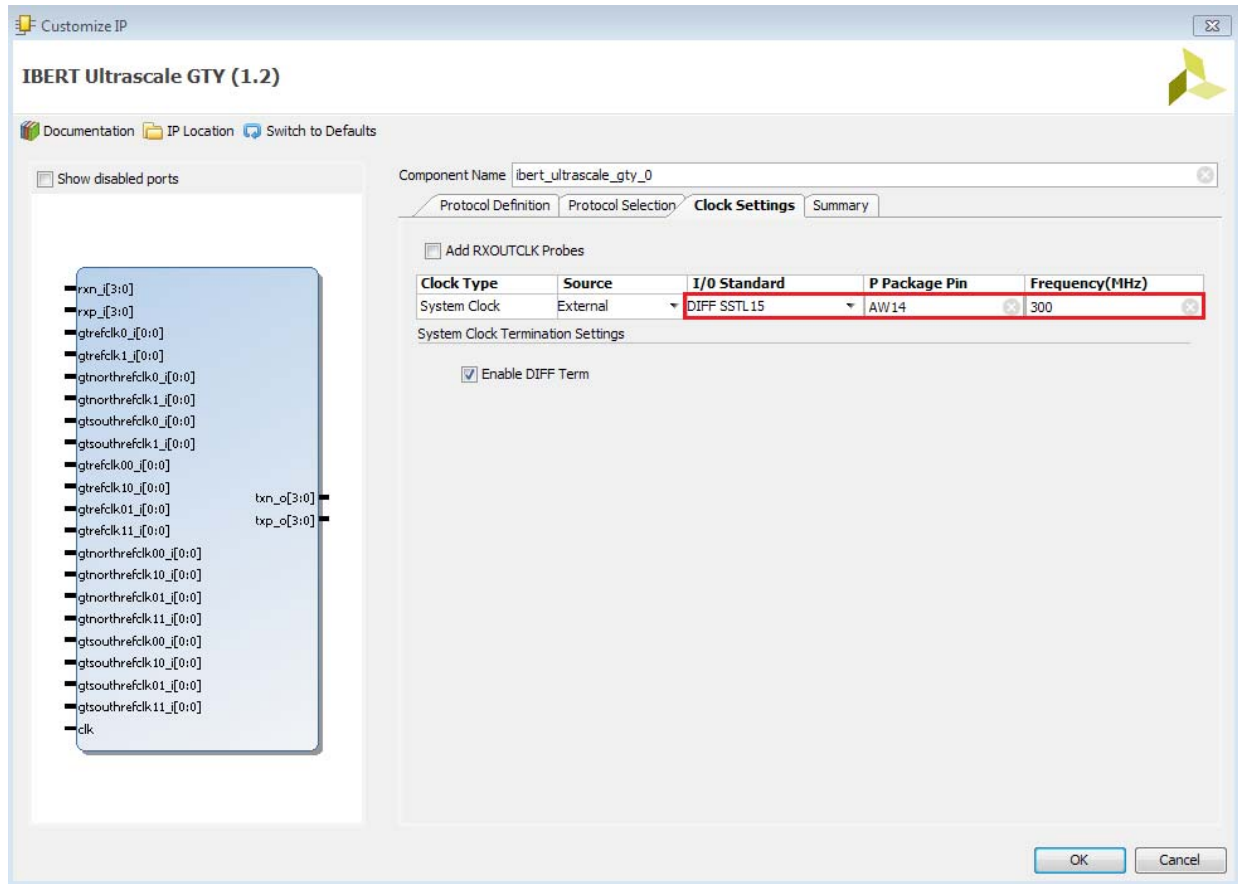
8. In the Protocol Selection tab, use the Protocol Selected drop-down menu next to QUAD_124 to select **Custom 1 / 28.00 Gbps** (Figure 2-17).



X15581-121416

Figure 2-17: Customize IP– Protocol Selection

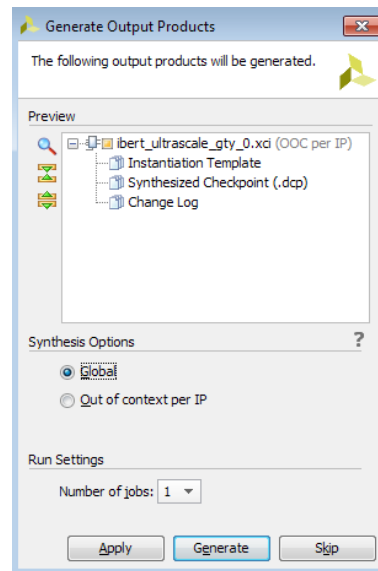
- In the Clock Settings tab, select **DIFF SSTL15** for the I/O Standard, enter **AW14** for the P Package Pin (the FPGA pins where the system clock is connected), and make sure the Frequency (MHz) is set to **300** (Figure 2-18).



X15582-121416

Figure 2-18: Customize IP– Clock Settings

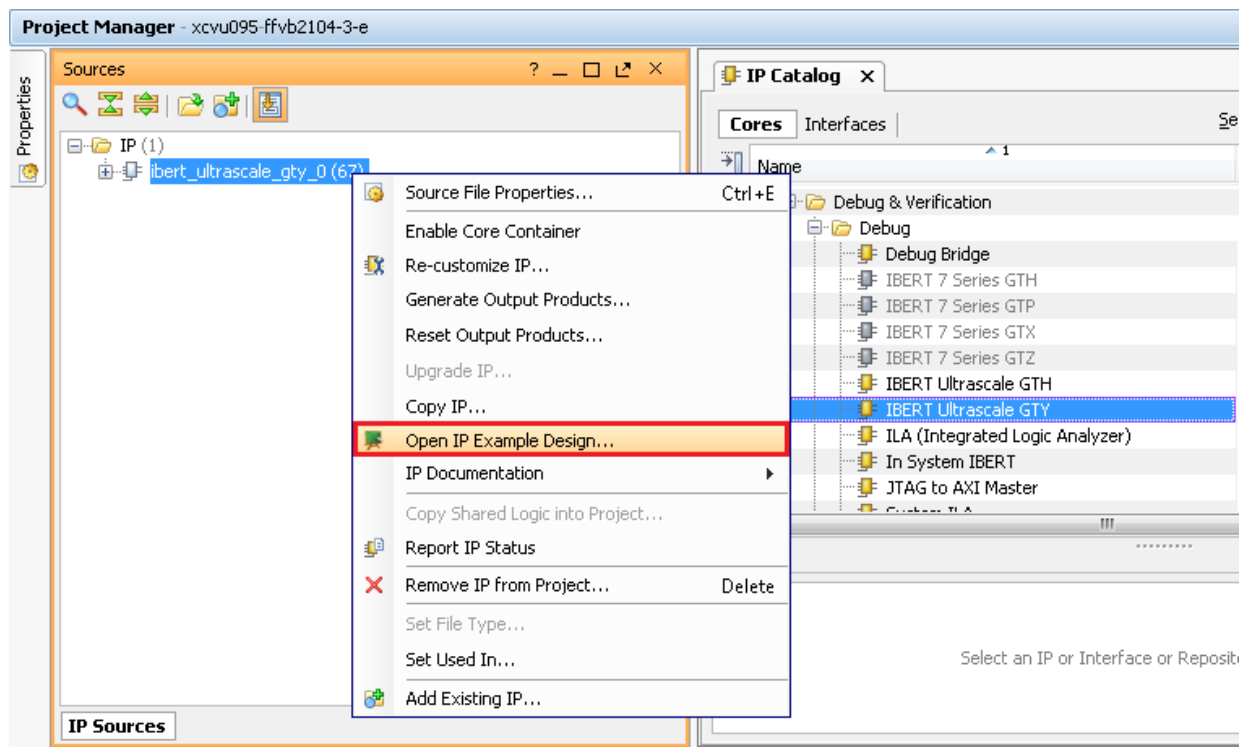
10. Click **OK**. Click **Generate** in the next window to generate the output products (Figure 2-19).



X15583-121416

Figure 2-19: Generate Output Products

11. Back on the Manage IP Catalog window, in the Sources window, right-click the **IBERT IP** and select **Open IP Example Design** (Figure 2-20). Specify a location to save the design, click **OK**, and the design opens in a new Vivado Design Suite window.



X15584-121416

Figure 2-20: Open IP Example Design

12. In the sources window, Design Sources should now show the IBERT design example (Figure 2-21).

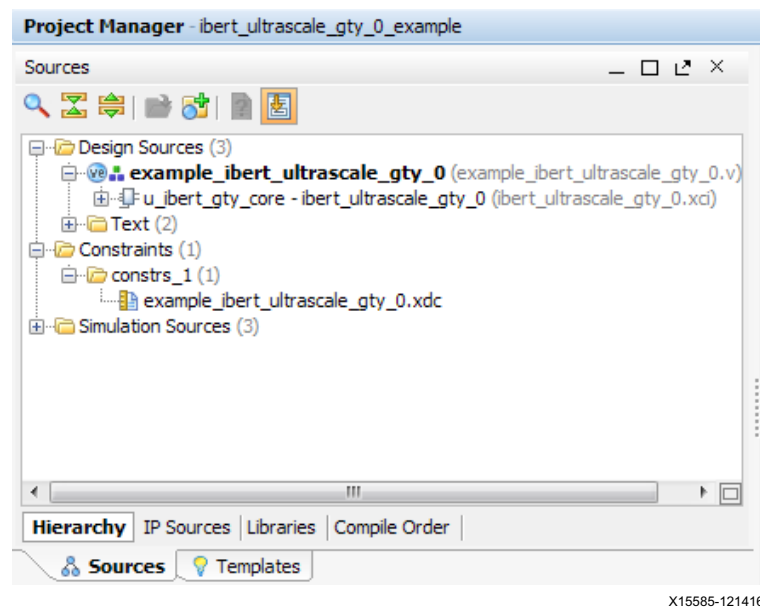


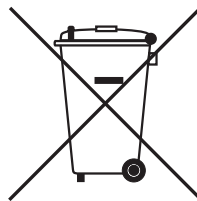
Figure 2-21: Design Sources File Hierarchy

13. Click **Run Synthesis** from the Flow Navigator to synthesize the design (Figure 2-11).
14. When the synthesis is done, a Synthesis Completed window opens. Select **Run Implementation** and click **OK** (Figure 2-12).
15. When the implementation is done, an Implementation Completed window opens. Select **Generate Bitstream** and click **OK** (Figure 2-13).
16. When the Bitstream Generation Completed dialog window appears, click **Cancel** (Figure 2-14).
17. Navigate to the
 ...\\ibert_ultrascale_gty_0_example\\ibert_ultrascale_gty_0_example.runs\\impl_1 directory to locate the generated bitstream.

Warranty

THIS LIMITED WARRANTY applies solely to standard hardware development boards and standard hardware programming cables manufactured by or on behalf of Xilinx ("Development Systems"). Subject to the limitations herein, Xilinx warrants that Development Systems, when delivered by Xilinx or its authorized distributor, for ninety (90) days following the delivery date, will be free from defects in material and workmanship and will substantially conform to Xilinx publicly available specifications for such products in effect at the time of delivery. This limited warranty excludes: (i) engineering samples or beta versions of Development Systems (which are provided "AS IS" without warranty); (ii) design defects or errors known as "errata"; (iii) Development Systems procured through unauthorized third parties; and (iv) Development Systems that have been subject to misuse, mishandling, accident, alteration, neglect, unauthorized repair or installation. Furthermore, this limited warranty shall not apply to the use of covered products in an application or environment that is not within Xilinx specifications or in the event of any act, error, neglect or default of Customer. For any breach by Xilinx of this limited warranty, the exclusive remedy of Customer and the sole liability of Xilinx shall be, at the option of Xilinx, to replace or repair the affected products, or to refund to Customer the price of the affected products. The availability of replacement products is subject to product discontinuation policies at Xilinx. Customer may not return product without first obtaining a customer return material authorization (RMA) number from Xilinx.

THE WARRANTIES SET FORTH HEREIN ARE EXCLUSIVE. XILINX DISCLAIMS ALL OTHER WARRANTIES, WHETHER EXPRESS, IMPLIED OR STATUTORY, INCLUDING, WITHOUT LIMITATION, ANY WARRANTY OF MERCHANTABILITY, FITNESS FOR A PARTICULAR PURPOSE, OR NON-INFRINGEMENT, AND ANY WARRANTY THAT MAY ARISE FROM COURSE OF DEALING, COURSE OF PERFORMANCE, OR USAGE OF TRADE. (2008.10)



Do not throw Xilinx products marked with the "crossed out wheeled bin" in the trash. Directive 2002/96/EC on waste electrical and electronic equipment (WEEE) requires the separate collection of WEEE. Your cooperation is essential in ensuring the proper management of WEEE and the protection of the environment and human health from potential effects arising from the presence of hazardous substances in WEEE. Return the marked products to Xilinx for proper disposal. Further information and instructions for free-of-charge return available at: www.xilinx.com/ehs/weee.htm.

Additional Resources and Legal Notices

Xilinx Resources

For support resources such as Answers, Documentation, Downloads, and Forums, see [Xilinx Support](#).

Solution Centers

See the [Xilinx Solution Centers](#) for support on devices, software tools, and intellectual property at all stages of the design cycle. Topics include design assistance, advisories, and troubleshooting tips.

References

The most up to date information related to the VCU1287 kit and its documentation is available on these websites.

[Virtex UltraScale FPGA VCU1287 Characterization Kit](#)

[Virtex UltraScale FPGA VCU1287 Characterization Kit documentation](#)

[Virtex UltraScale FPGA VCU1287 Characterization Kit Master Answer Record \(AR 66056\)](#)

These documents provide supplemental material useful with this guide:

1. *VCU1287 Characterization Board User Guide* ([UG1121](#))
2. *HW-CLK-101-SCLK2 SuperClock-2 Module User Guide* ([UG770](#))
3. *Silicon Labs CP210x USB-to-UART Installation Guide* ([UG1033](#))
4. *UltraScale Architecture Configuration User Guide* ([UG570](#))
5. *Vivado Design Suite User Guide: Programming and Debugging* ([UG908](#))
6. *Kintex UltraScale FPGAs Data Sheet: DC and AC Switching Characteristics* ([DS892](#))

7. *LogiCORE IP Integrated Bit Error Ratio Tester (IBERT) for 7 Series GTX Transceivers: Product Guide for Vivado Design Suite* ([PG132](#))
8. *Virtex UltraScale FPGAs Data Sheet: DC and AC Switching Characteristics* ([DS893](#))
9. *Zynq-7000 All Programmable SoC Overview* ([DS190](#))
10. *UltraScale Architecture GTH Transceivers User Guide* ([UG576](#))
11. *Vivado Design Suite User Guide: Getting Started* ([UG910](#))
12. *Tera Term Terminal Emulator Installation Guide* ([UG1036](#))
13. *UltraScale FPGAs Transceivers Wizard LogiCORE IP Product Guide* ([PG182](#))

Training Resources

14. [Vivado Design Suite Hands-on Introductory Workshop](#)
15. [Vivado Design Suite Tool Flow](#)

Please Read: Important Legal Notices

The information disclosed to you hereunder (the "Materials") is provided solely for the selection and use of Xilinx products. To the maximum extent permitted by applicable law: (1) Materials are made available "AS IS" and with all faults, Xilinx hereby DISCLAIMS ALL WARRANTIES AND CONDITIONS, EXPRESS, IMPLIED, OR STATUTORY, INCLUDING BUT NOT LIMITED TO WARRANTIES OF MERCHANTABILITY, NON-INFRINGEMENT, OR FITNESS FOR ANY PARTICULAR PURPOSE; and (2) Xilinx shall not be liable (whether in contract or tort, including negligence, or under any other theory of liability) for any loss or damage of any kind or nature related to, arising under, or in connection with, the Materials (including your use of the Materials), including for any direct, indirect, special, incidental, or consequential loss or damage (including loss of data, profits, goodwill, or any type of loss or damage suffered as a result of any action brought by a third party) even if such damage or loss was reasonably foreseeable or Xilinx had been advised of the possibility of the same. Xilinx assumes no obligation to correct any errors contained in the Materials or to notify you of updates to the Materials or to product specifications. You may not reproduce, modify, distribute, or publicly display the Materials without prior written consent. Certain products are subject to the terms and conditions of Xilinx's limited warranty, please refer to Xilinx's Terms of Sale which can be viewed at <https://www.xilinx.com/legal.htm#tos>; IP cores may be subject to warranty and support terms contained in a license issued to you by Xilinx. Xilinx products are not designed or intended to be fail-safe or for use in any application requiring fail-safe performance; you assume sole risk and liability for use of Xilinx products in such critical applications, please refer to Xilinx's Terms of Sale which can be viewed at <https://www.xilinx.com/legal.htm#tos>.

Automotive Applications Disclaimer

AUTOMOTIVE PRODUCTS (IDENTIFIED AS "XA" IN THE PART NUMBER) ARE NOT WARRANTED FOR USE IN THE DEPLOYMENT OF AIRBAGS OR FOR USE IN APPLICATIONS THAT AFFECT CONTROL OF A VEHICLE ("SAFETY APPLICATION") UNLESS THERE IS A SAFETY CONCEPT OR REDUNDANCY FEATURE CONSISTENT WITH THE ISO 26262 AUTOMOTIVE SAFETY STANDARD ("SAFETY DESIGN"). CUSTOMER SHALL, PRIOR TO USING OR DISTRIBUTING ANY SYSTEMS THAT INCORPORATE PRODUCTS, THOROUGHLY TEST SUCH SYSTEMS FOR SAFETY PURPOSES. USE OF PRODUCTS IN A SAFETY APPLICATION WITHOUT A SAFETY DESIGN IS FULLY AT THE RISK OF CUSTOMER, SUBJECT ONLY TO APPLICABLE LAWS AND REGULATIONS GOVERNING LIMITATIONS ON PRODUCT LIABILITY.

© Copyright 2015–2016 Xilinx, Inc. Xilinx, the Xilinx logo, Artix, ISE, Kintex, Spartan, Virtex, Vivado, Zynq, and other designated brands included herein are trademarks of Xilinx in the United States and other countries. All other trademarks are the property of their respective owners.