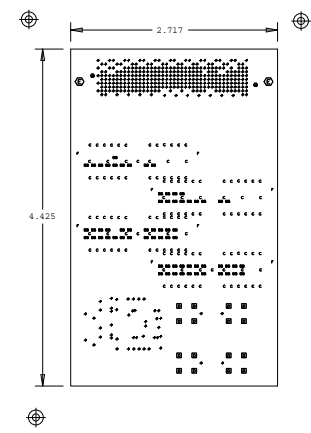
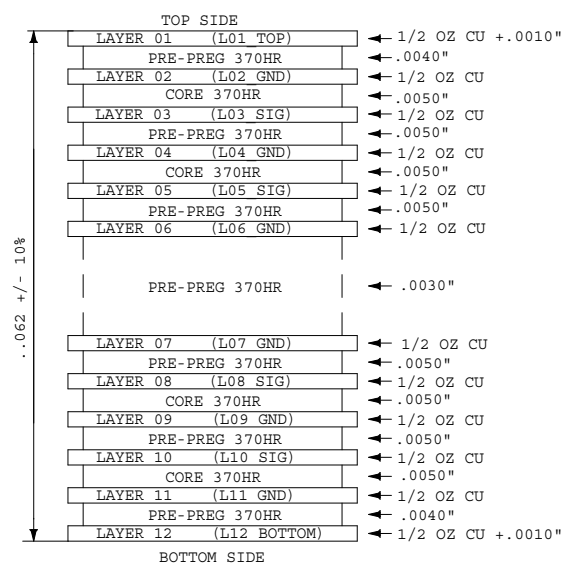


REVISIONS			
REV	DESCRIPTION	DATE	APPROVED
B	PROTOTYPE	12/19/09	SCAREY



DRILL CHART: TOP to BOTTOM					
ALL UNITS ARE IN MILS					
FIGURE	SIZE	TOLERANCE	PLATED	QTY	
•	10.0	+3.0/-3.0	PLATED	136	
•	10.0	+3.0/-3.0	PLATED	361	
•	15.0	+3.0/-3.0	PLATED	123	
■	63.0	+3.0/-3.0	PLATED	16	
⊙	106.0	+3.0/-3.0	PLATED	2	
•	40.0	+3.0/-3.0	NON-PLATED	8	
•	52.0	+3.0/-3.0	NON-PLATED	2	
				TOTAL HOLES:	648



DETAIL A
SCALE: NONE
3

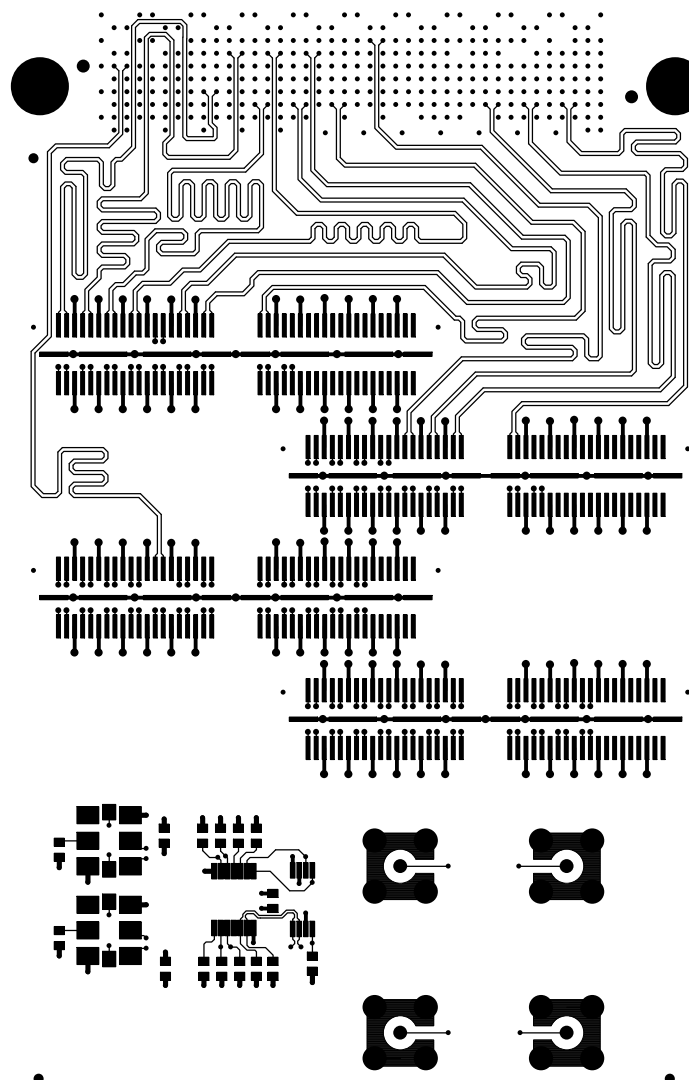
LINE WIDTH IMPEDANCE CHART FOR REFERENCE					
LAYER	SINGLE ENDED LINE WIDTH	DIFF LINE WIDTH	DIFF LINE SPACE	SINGLE	DIFF
L1, L12		5 MILS	9.92 MILS	50-55 OHMS	100 OHMS
ALL INNER		4 MILS	11.06 MILS	50-55 OHMS	100 OHMS

ARTWORK, ROHS COMPLIANT, HW-FMC-XM101-G	
ARTMASTER # 1280503	LAYER:
Designed by Xilinx	DATE: DECEMBER 19, 2009
BOARD designer: SCAREY	PHONE: 408 879 4451
FILM SHEET OF 18	XILINX DOC USE ONLY REVISION: B

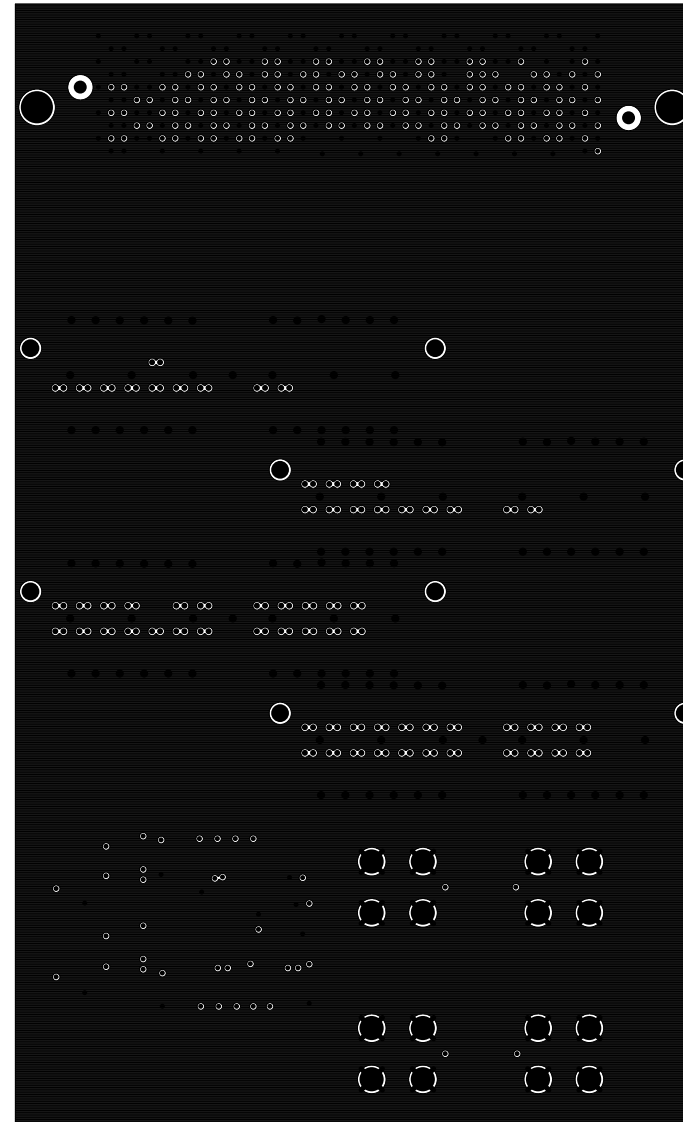
- NOTES:
- FABRICATE TO IPC-6012 CLASS 2, CURRENT REVISION.
 - BOARD SHALL MEET THE INSPECTION CRITERIA OF IPC-A-600, CLASS 2, CURRENT REVISION.
 - MATERIAL: ROHS COMPLIANT POLYIMID/370HR
 - WEIGHT OF ALL COPPER LAYERS SHALL NOT BE LESS 0.5 OZ. PER SQUARE FOOT.
 - IMPEDANCE TOLERANCE +/- 10%
 - APPLY SOLDER MASK OVER BARE COPPER (SMBCC) LAW IPC-SM-840, BOTH SIDES, USING LPI, COLOR GREEN
 - FINISH: GOLD IMMERSION.
 - SILKSCREEN TOP SIDE/BOTH SIDES WITH NON-CONDUCTIVE EPOXY BASED INK. COLOR SHALL BE WHITE A CONTRASTING INK WITH RESPECT TO SOLDER MASK COLOR. DISTORTION OF SILKSCREEN IS ACCEPTABLE OVER TRACES. EPOXY INK ON PLATED LANDS IS NOT ACCEPTABLE.
 - VENDOR LOGO AND DATE CODE TO BE MARKED FAR SIDE MAXIMUM HEIGHT .12 INCHES.
 - 100% ELECTRICAL TEST REQUIRED FOR CONTINUITY. BOARD SHALL HAVE A UL RATING OF 94V-0. UL SYMBOL AND RATING SHALL BE MARKED FAR SIDE.
 - REMOVE ALL UNUSED PADS FROM INTERNAL LAYERS.
 - PRE-SOLDERMASK OPERATION: ALL VIAS ON PRIMARY SIDE (TOP) ENCRoACHED AND PLUGGED FROM BGA ATTACHMENT SIDE (DEFAULT TOP). ENSURE THESE VIAS ARE PLUGGED LEAVING NO ASSOCIATED METAL EXPOSED.
 - SOLDER MASK REGISTRATION TO BE WITHIN DIAMETRICAL TRUE POSITION OF +/- 0.002 WITH APPLICABLE HOLE / PAD.
 - 274X GERBERS/ODB++ USED FOR FAB MUST BE VERIFIED AGAINST THE PROVIDED IPC356 NETLIST.
 - USE ARTMASTER # 1280503

UNLESS OTHERWISE SPECIFIED		SIGNATURES		DATE
DIMENSIONS ARE IN INCHES		DRAWN	SCAREY	12/19/09
TOLERANCES ON:		CHECKED		
2 PL DECIMALS +/- .010		ENGRG	ED MCGETTIGAN	
3 PL DECIMALS +/- .005		ISSUED		
ANGLES +				
FRACTIONS +				
SIZE D	FSCM NO	DWG NO	1280503	
SCALE NONE	SHEET		1 OF 1	

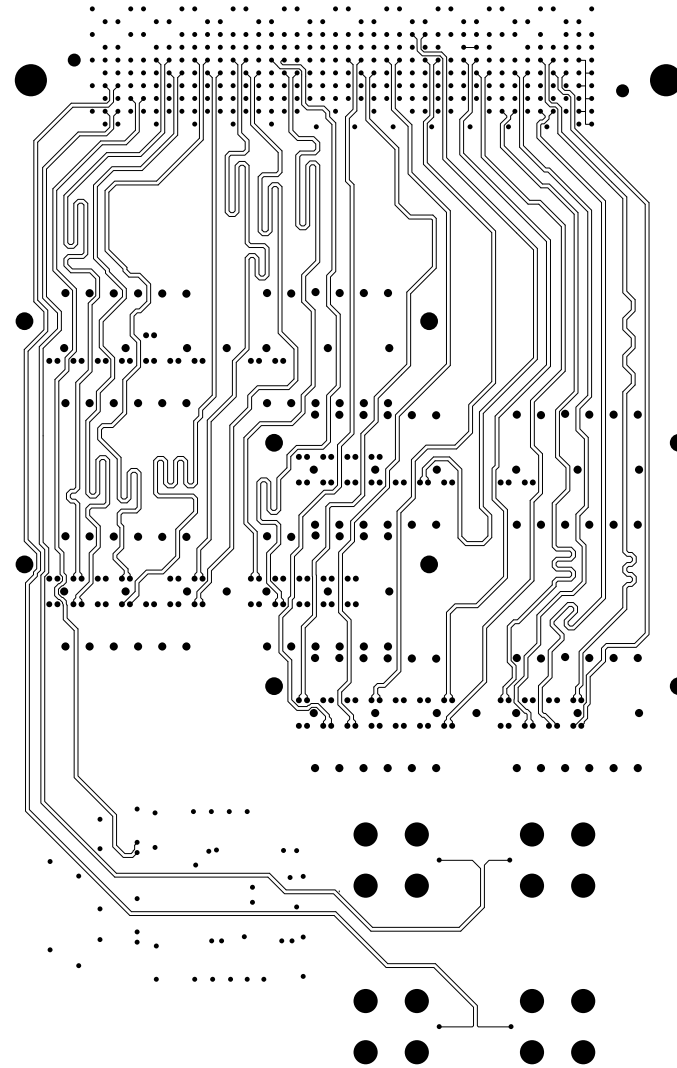
PCB, ROHS COMPLIANT
HW-FMC-XM101-G



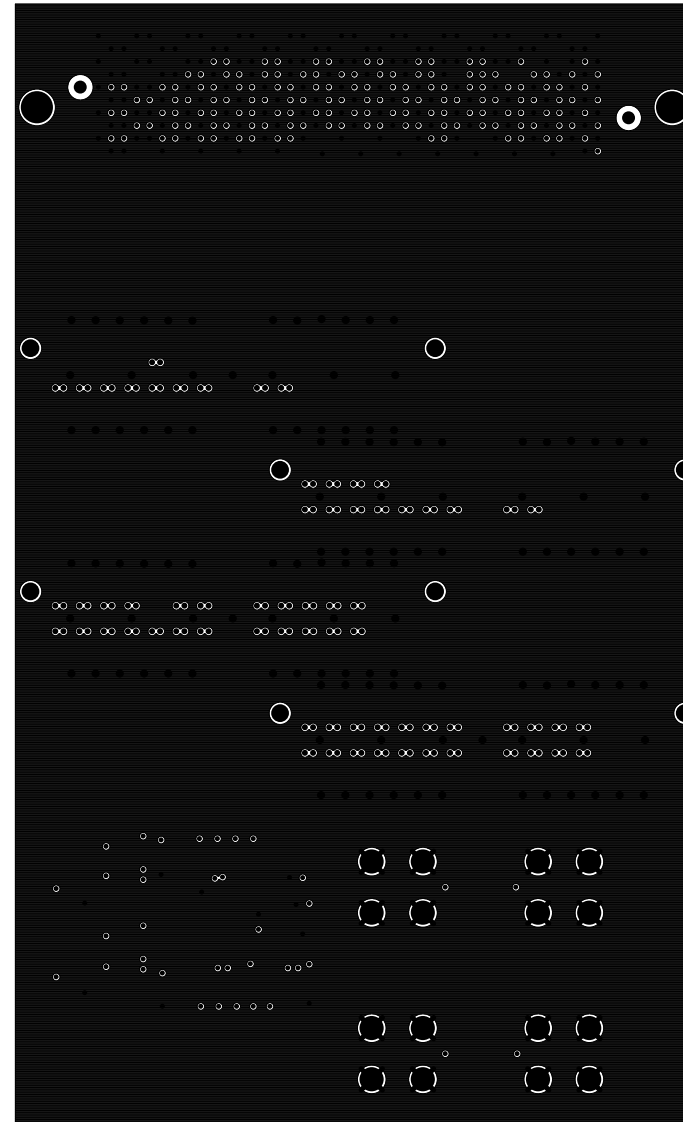
ARTWORK, ROHS COMPLIANT, HW-FMC-XM101-G	
ARTMASTER # 1280503	LAYER: L1_TOP
Designed by Xilinx	DATE: DECEMBER 19, 2009
BOARD designer: SCAREY	PHONE: 408 879 4451
FILM SHEET 1 OF 18	XILINX DOC USE ONLY REVISION: B



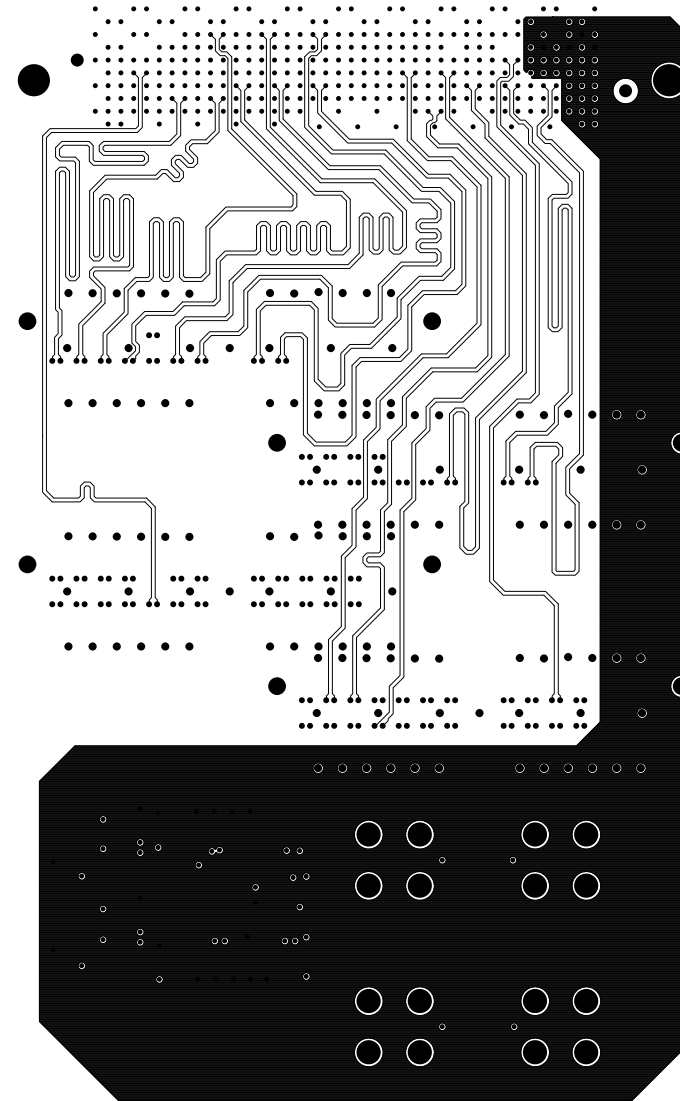
ARTWORK, ROHS COMPLIANT, HW-FMC-XM101-G	
ARTMASTER # 1280503	LAYER: L2_GND
Designed by Xilinx	DATE: DECEMBER 19, 2009
BOARD designer: SCAREY	PHONE: 408 879 4451
FILM SHEET 2 OF 18	XILINX DOC USE ONLY REVISION: B



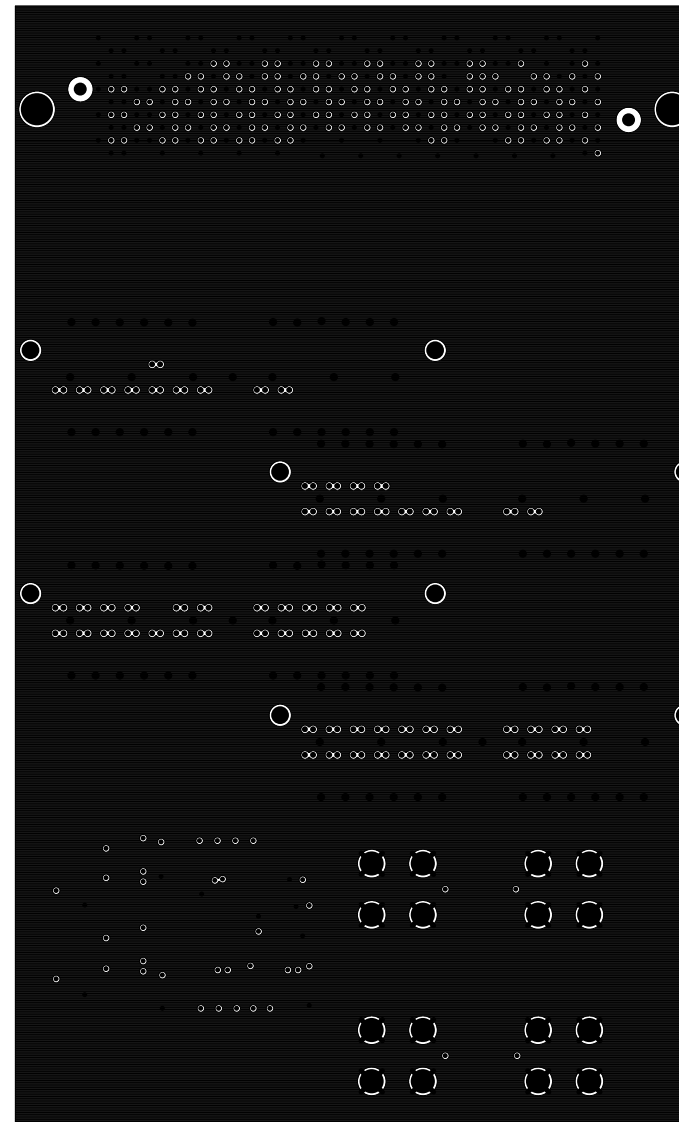
ARTWORK, ROHS COMPLIANT, HW-FMC-XM101-G	
ARTMASTER # 1280503	LAYER: L3_SIG
Designed by Xilinx	DATE: DECEMBER 19, 2009
BOARD designer: SCAREY	PHONE: 408 879 4451
FILM SHEET 3 OF 18	XILINX DOC USE ONLY REVISION: B



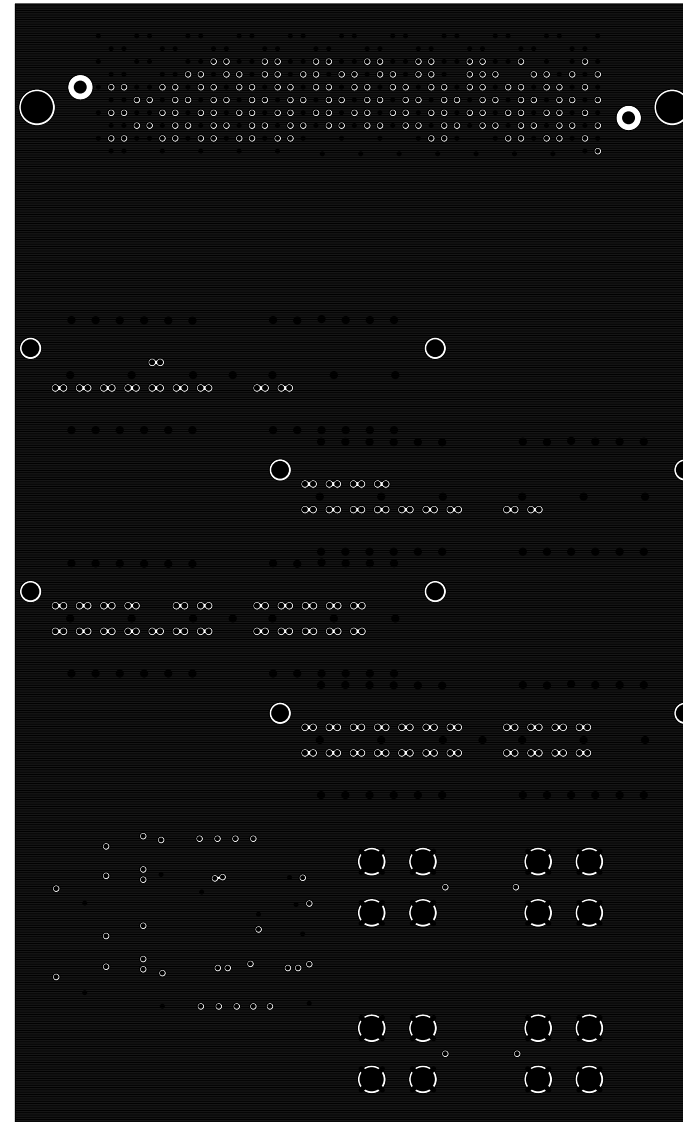
ARTWORK, ROHS COMPLIANT, HW-FMC-XM101-G	
ARTMASTER # 1280503	LAYER: L4_GND
Designed by Xilinx	DATE: DECEMBER 19, 2009
BOARD designer: SCAREY	PHONE: 408 879 4451
FILM SHEET 4 OF 18	XILINX DOC USE ONLY REVISION: B



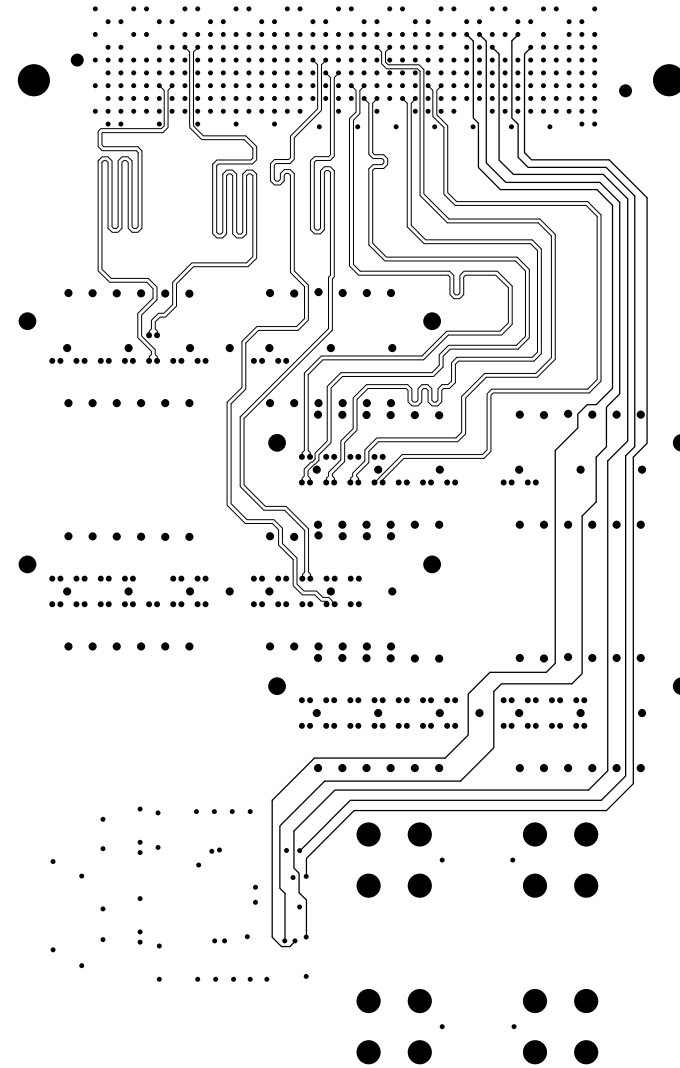
ARTWORK, ROHS COMPLIANT, HW-FMC-XM101-G	
ARTMASTER # 1280503	LAYER: L5_SIG
Designed by Xilinx	DATE: DECEMBER 19, 2009
BOARD designer: SCAREY	PHONE: 408 879 4451
FILM SHEET 5 OF 18	XILINX DOC USE ONLY REVISION: B



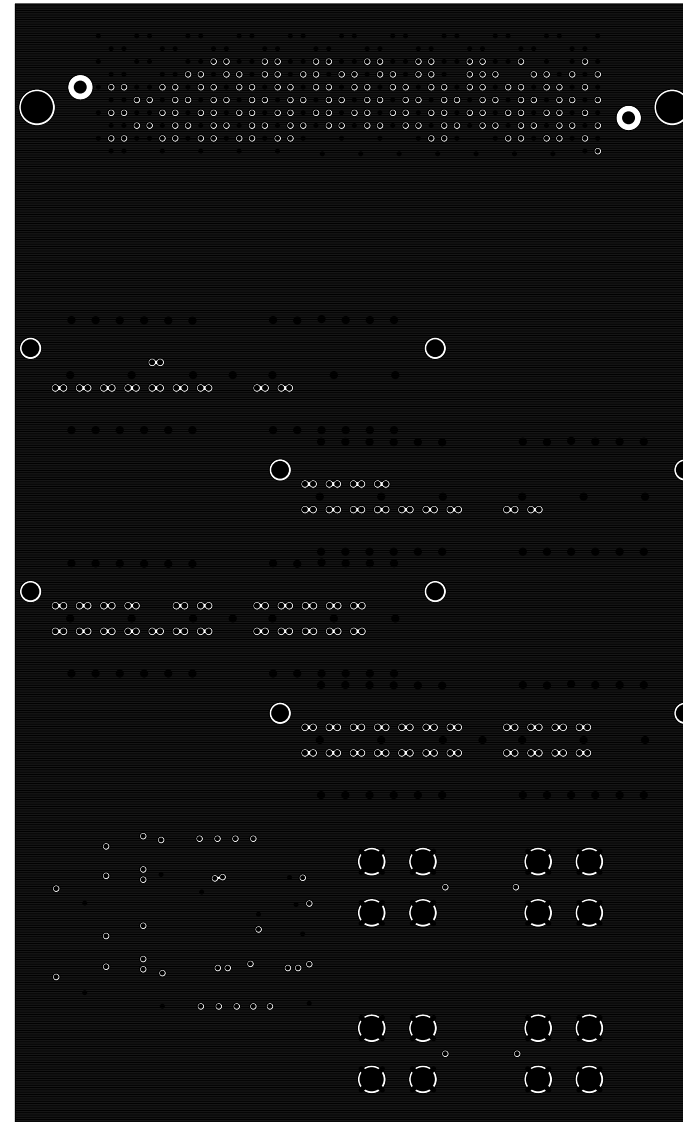
ARTWORK, ROHS COMPLIANT, HW-FMC-XM101-G	
ARTMASTER # 1280503	LAYER: L6_GND
Designed by Xilinx	DATE: DECEMBER 19, 2009
BOARD designer: SCAREY	PHONE: 408 879 4451
FILM SHEET 6 OF 18	XILINX DOC USE ONLY REVISION: B



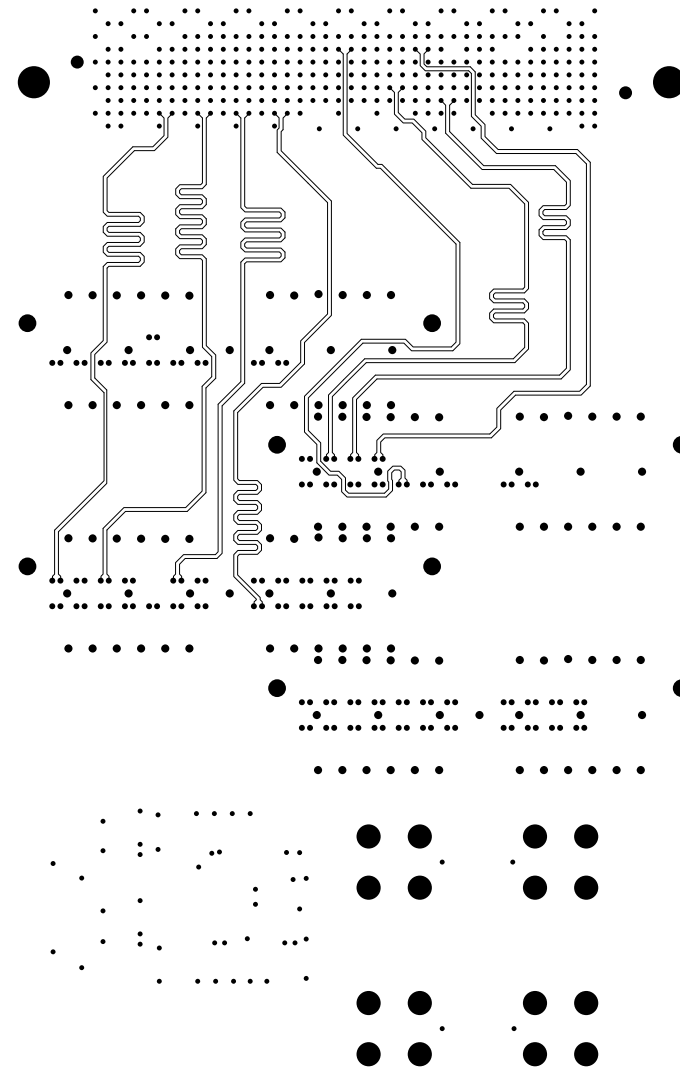
ARTWORK, ROHS COMPLIANT, HW-FMC-XM101-G	
ARTMASTER # 1280503	LAYER: L7_GND
Designed by Xilinx	DATE: DECEMBER 19, 2009
BOARD designer: SCAREY	PHONE: 408 879 4451
FILM SHEET 07 OF 18	XILINX DOC USE ONLY REVISION: B



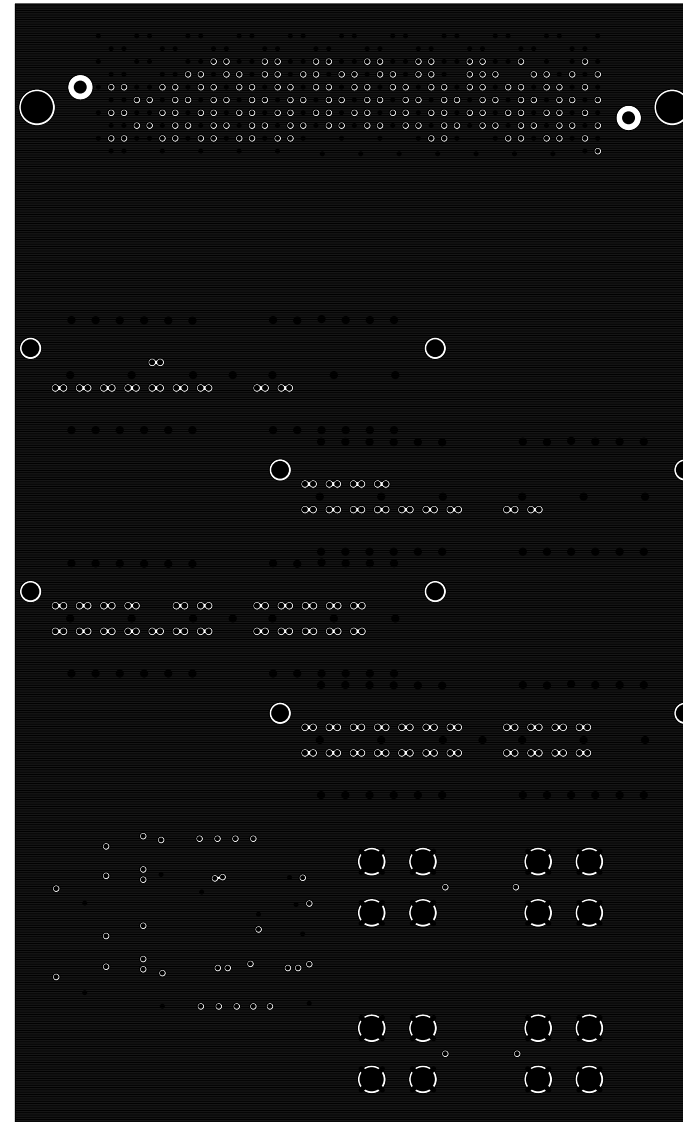
ARTWORK, ROHS COMPLIANT, HW-FMC-XM101-G	
ARTMASTER # 1280503	LAYER: L08_SIG
Designed by Xilinx	DATE: DECEMBER 19, 2009
BOARD designer: SCAREY	PHONE: 408 879 4451
FILM SHEET 08 OF 18	XILINX DOC USE ONLY REVISION: B



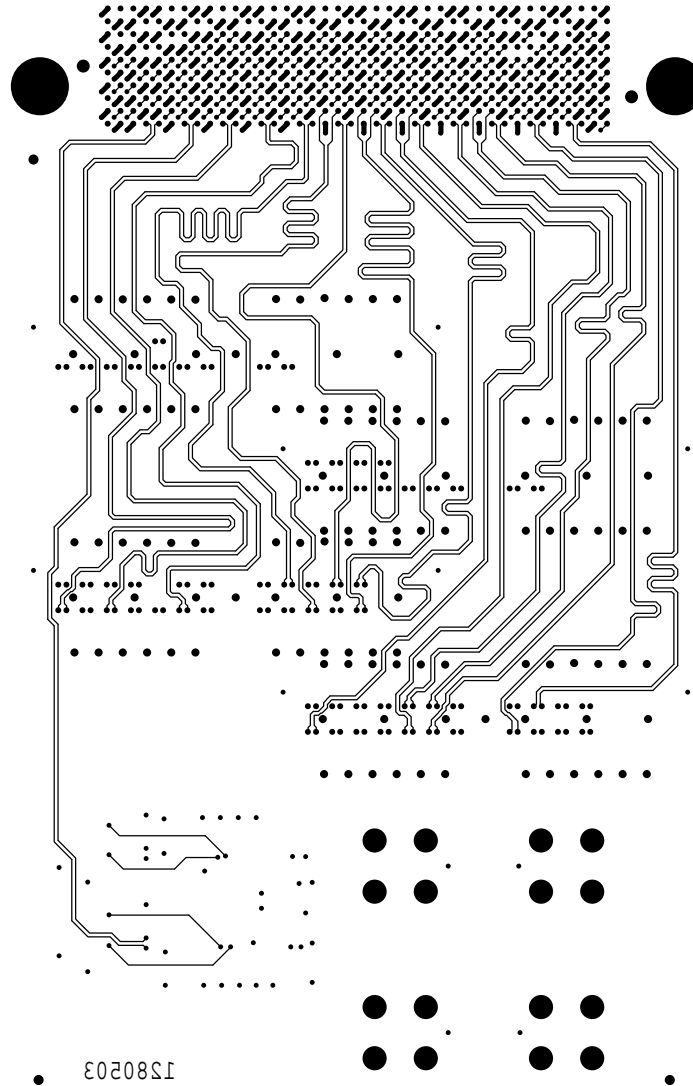
ARTWORK, ROHS COMPLIANT, HW-FMC-XM101-G	
ARTMASTER # 1280503	LAYER: L09_GND
Designed by Xilinx	DATE: DECEMBER 19, 2009
BOARD designer: SCAREY	PHONE: 408 879 4451
FILM SHEET 09 OF 18	XILINX DOC USE ONLY REVISION: B



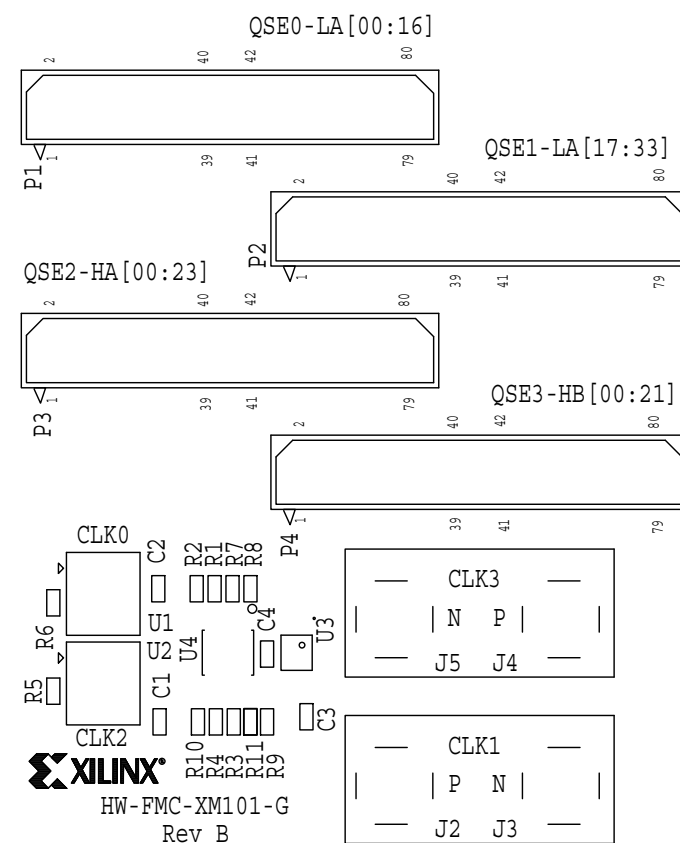
ARTWORK, ROHS COMPLIANT, HW-FMC-XM101-G	
ARTMASTER # 1280503	LAYER: L10_SIG
Designed by Xilinx	DATE: DECEMBER 19, 2009
BOARD designer: SCAREY	PHONE: 408 879 4451
FILM SHEET 10 OF 18	XILINX DOC USE ONLY REVISION: B



ARTWORK, ROHS COMPLIANT, HW-FMC-XM101-G	
ARTMASTER # 1280503	LAYER: L11_GND
Designed by Xilinx	DATE: DECEMBER 19, 2009
BOARD designer: SCAREY	PHONE: 408 879 4451
FILM SHEET 11 OF 18	XILINX DOC USE ONLY REVISION: B



ARTWORK, ROHS COMPLIANT, HW-FMC-XM101-G	
ARTMASTER # 1280503	LAYER: L12_BOTTOM
Designed by Xilinx	DATE: DECEMBER 19, 2009
BOARD designer: SCAREY	PHONE: 408 879 4451
FILM SHEET 12 OF 18	XILINX DOC USE ONLY REVISION: B



ARTWORK, ROHS COMPLIANT, HW-FMC-XM101-G	
ARTMASTER # 1280503	LAYER: SILK_TOP
Designed by Xilinx	DATE: DECEMBER 19, 2009
BOARD designer: SCAREY	PHONE: 408 879 4451
FILM SHEET 16 OF 18	XILINX DOC USE ONLY REVISION: B



11



2009 All Rights Reserved
© Copyright Xilinx Inc
SCH P\N:0381334
PCB P\N:1280503

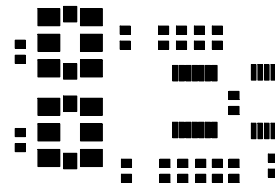
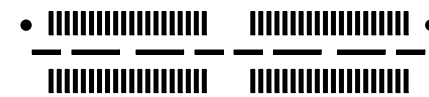
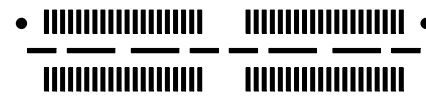
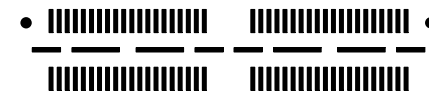
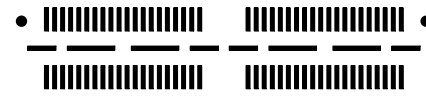
Rev B
HW-FMC-XM101-G



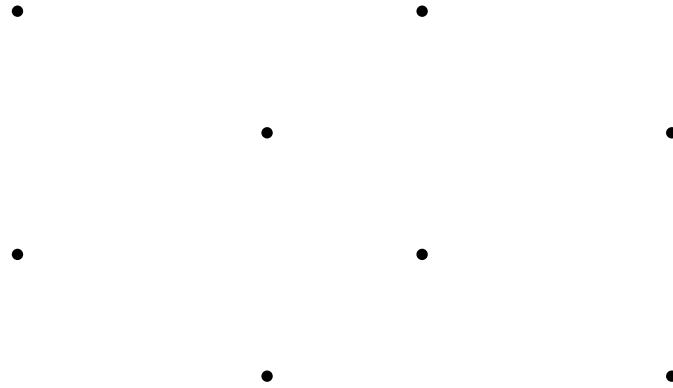
ASSY P\N
[Redacted]



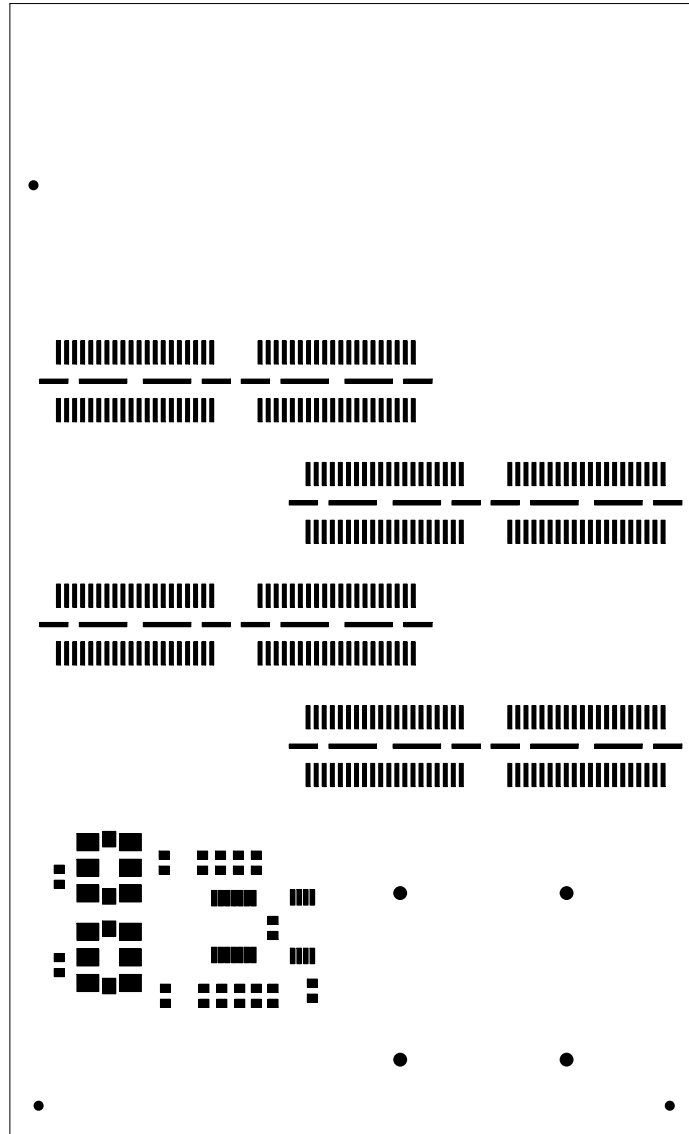
ARTWORK, ROHS COMPLIANT, HW-FMC-XM101-G	
ARTMASTER # 1280503	LAYER: SILK_BOT
Designed by Xilinx	DATE: DECEMBER 19, 2009
BOARD designer: SCAREY	PHONE: 408 879 4451
FILM SHEET 15 OF 18	XILINX DOC USE ONLY REVISION: B



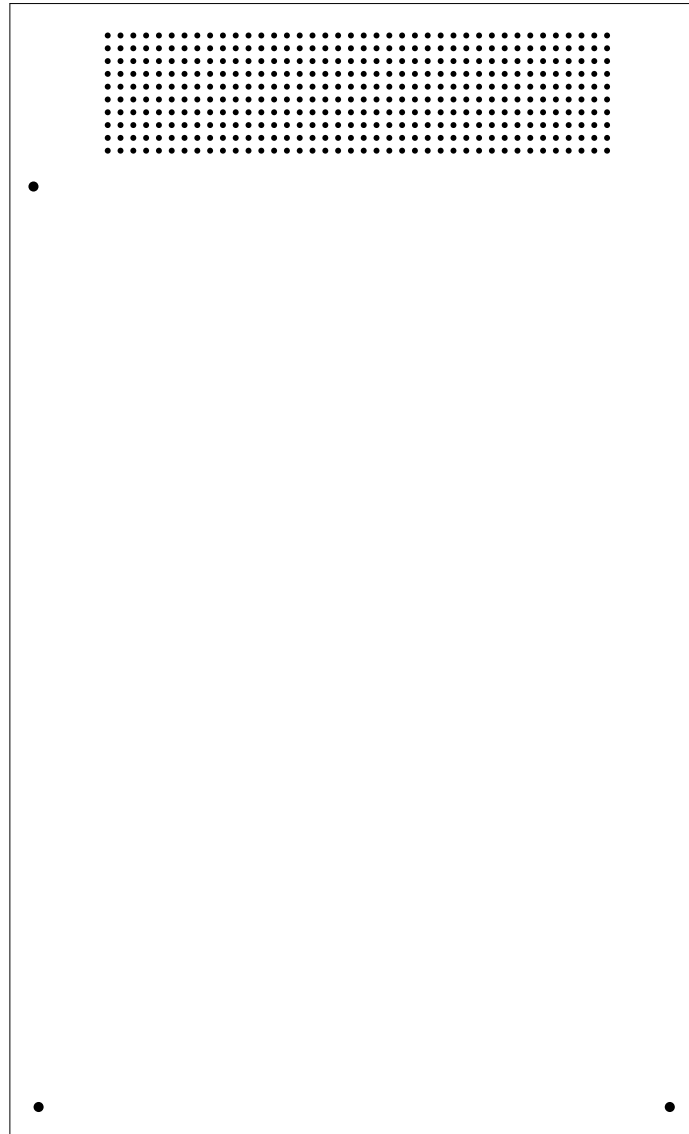
ARTWORK, ROHS COMPLIANT, HW-FMC-XM101-G	
ARTMASTER # 1280503	LAYER: MASK_TOP
Designed by Xilinx	DATE: DECEMBER 19, 2009
BOARD designer: SCAREY	PHONE: 408 879 4451
FILM SHEET 18 OF 18	XILINX DOC USE ONLY REVISION: B



ARTWORK, ROHS COMPLIANT, HW-FMC-XM101-G	
ARTMASTER # 1280503	LAYER: MASK_BOTTOM
Designed by Xilinx	DATE: DECEMBER 19, 2009
BOARD designer: SCAREY	PHONE: 408 879 4451
FILM SHEET 17 OF 18	XILINX DOC USE ONLY REVISION: B



ARTWORK, ROHS COMPLIANT, HW-FMC-XM101-G	
ARTMASTER # 1280503	LAYER: PASTE_TOP
Designed by Xilinx	DATE: DECEMBER 19, 2009
BOARD designer: SCAREY	PHONE: 408 879 4451
FILM SHEET 14 OF 18	XILINX DOC USE ONLY REVISION: B



ARTWORK, ROHS COMPLIANT, HW-FMC-XM101-G	
ARTMASTER # 1280503	LAYER: PASTE_BOT
Designed by Xilinx	DATE: DECEMBER 19, 2009
BOARD designer: SCAREY	PHONE: 408 879 4451
FILM SHEET 13 OF 18	XILINX DOC USE ONLY REVISION: B

7

6

5

4

3

2

1

REVISIONS			
REV	DESCRIPTION	DATE	APPROVED
B	PROTOTYPE	12/19/09	SCAREY

D

D

C

C

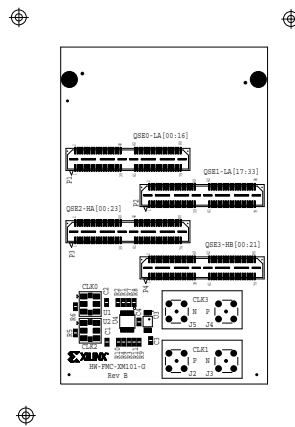
B

B

A

A

- NOTES: (UNLESS OTHERWISE SPECIFIED)
- ASSEMBLE TO MEET INSPECTION CRITERIA OF IPC-A-610, CLASS 2, CURRENT REVISION.
 - BAG AND TAG (OR MARK CONTAINER) WITH PART NUMBER.
 - REFERENCE SCHEMATIC (OR AVL) FOR BILL OF MATERIALS.



ARTWORK, ROHS COMPLIANT, HW-FMC-XM101-G	
ARTMASTER # 1280563	LAYER: SILK TOP
Designed by Xilinx	DATE: DECEMBER 19, 2009
BOARD designer: SCAREY	PHONE: 408 879 4451
FILM SHEET 16 OF 18	XILINX DOC USE ONLY REVISION: B

UNLESS OTHERWISE SPECIFIED DIMENSIONS ARE IN INCHES TOLERANCES ON: 2 PL DECIMALS +/- .010 3 PL DECIMALS +/- .005 ANGLES + FRACTIONS +	SIGNATURES		DATE	ASSY, ROHS COMPLIANT HW-FMC-XM101-G
	DRAWN	SCAREY	12/19/09	
	CHECKED			
	ENGRG ED	MCGETTIGAN		
	ISSUED			
				SIZE D
				FSCM NO
				DWG NO 0431565
				REV B
SCALE NONE	SHEET		1 OF 1	

7

6

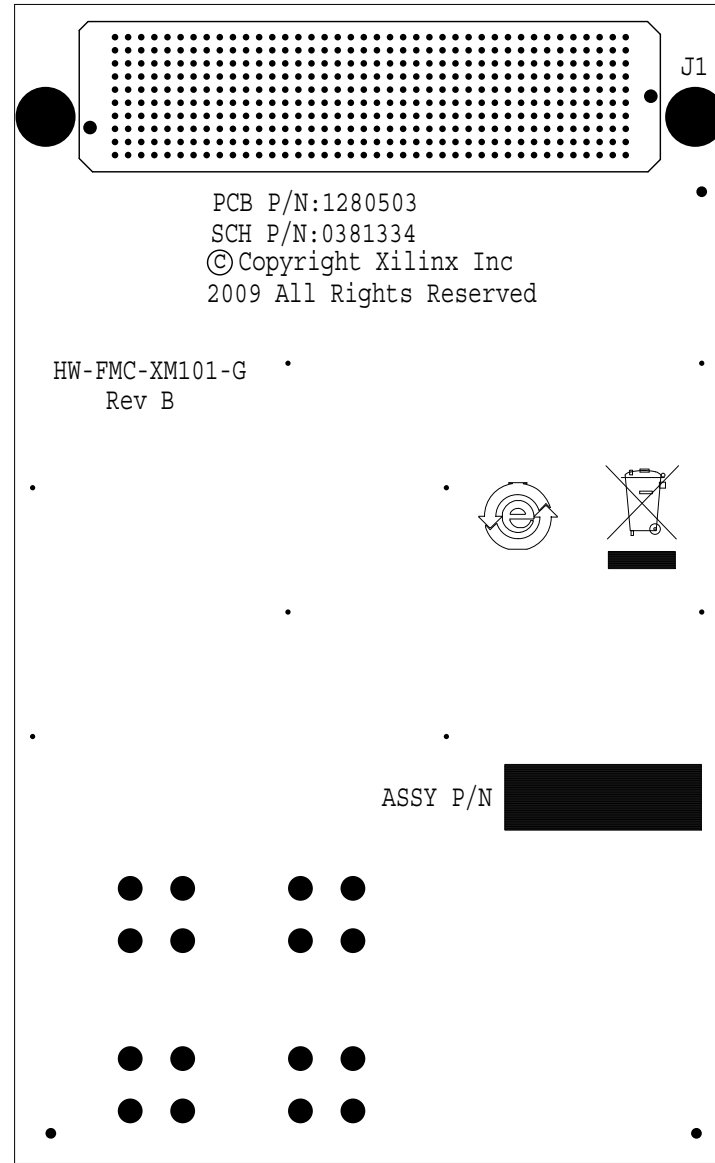
5

4

3

2

1



ARTWORK, ROHS COMPLIANT, HW-FMC-XM101-G	
ARTMASTER # 1280503	LAYER: SILK_BOT
Designed by Xilinx	DATE: DECEMBER 19, 2009
BOARD designer: SCAREY	PHONE: 408 879 4451
FILM SHEET 15 OF 18	XILINX DOC USE ONLY REVISION: B

7

6

5

4

3

2

1

REVISIONS			
REV	DESCRIPTION	DATE	APPROVED
B	PROTOTYPE	12/19/09	SCAREY

D

D

C

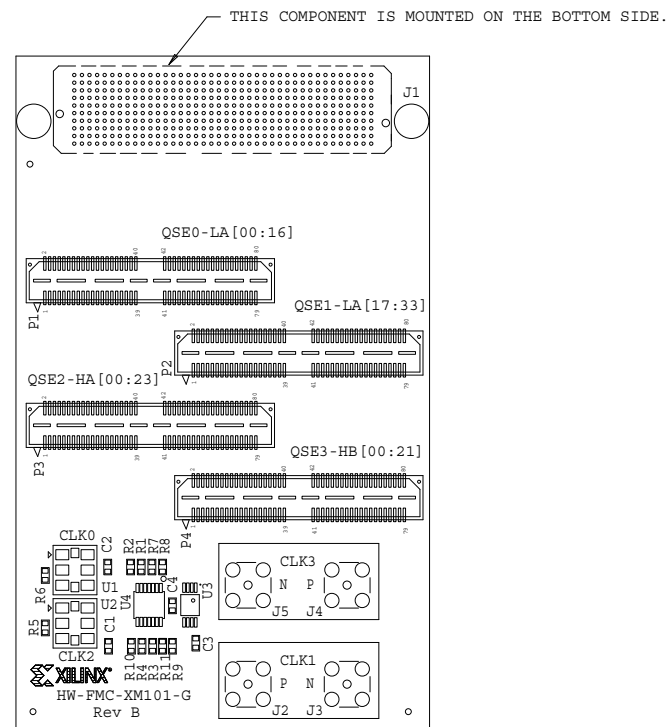
C

B

B

A

A



PRIMARY SIDE

NOTES: (UNLESS OTHERWISE SPECIFIED)

- ASSEMBLE TO MEET INSPECTION CRITERIA OF IPC-A-610, CLASS 2, CURRENT REVISION.
- BAG AND TAG (OR MARK CONTAINER) WITH PART NUMBER.
- REFERENCE SCHEMATIC (OR AVL) FOR BILL OF MATERIALS.

UNLESS OTHERWISE SPECIFIED DIMENSIONS ARE IN INCHES TOLERANCES ON; 2 PL DECIMALS +/- .010 3 PL DECIMALS +/- .005 ANGLES + FRACTIONS +	SIGNATURES		DATE	ASSY, ROHS COMPLIANT HW-FMC-XM101-G
	DRAWN	SCAREY	12/19/09	
	CHECKED			
	ENGRG ED	MCGETTIGAN		
	ISSUED			
				SIZE D
				FSCM NO
				DWG NO
				0431565
				REV
				B
				SCALE
				NONE
				SHEET
				1 OF 1

7

6

5

4

3

2

1

7

6

5

4

3

2

1

REVISIONS			
REV	DESCRIPTION	DATE	APPROVED
B	PROTOTYPE	12/19/09	SCAREY

D

D

C

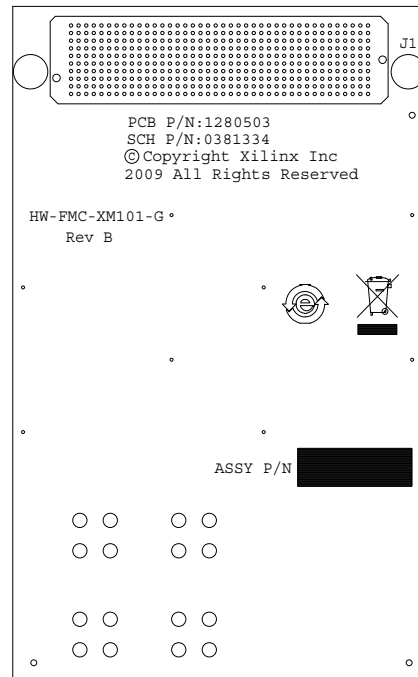
C

B

B

A

A



SECONDARY SIDE

UNLESS OTHERWISE SPECIFIED DIMENSIONS ARE IN INCHES TOLERANCES ON: 2 PL DECIMALS +/- .010 3 PL DECIMALS +/- .005 ANGLES + FRACTIONS +	SIGNATURES		DATE	ASSY, ROHS COMPLIANT HW-FMC-XM101-G
	DRAWN	SCAREY	12/19/09	
	CHECKED			
	ENGRG ED MCGETTIGAN			
	ISSUED			
	SIZE	FSCM NO	DWG NO	REV
	D		0431565	B
	SCALE	NONE	SHEET	2 OF 2

7

6

5

4

3

2

1