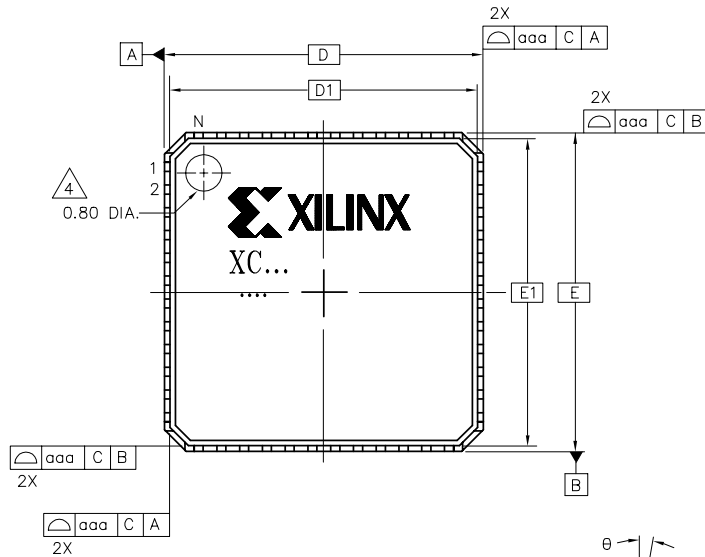
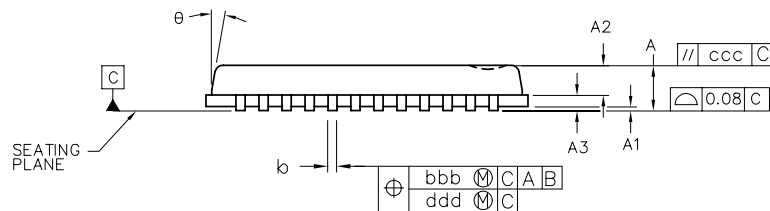
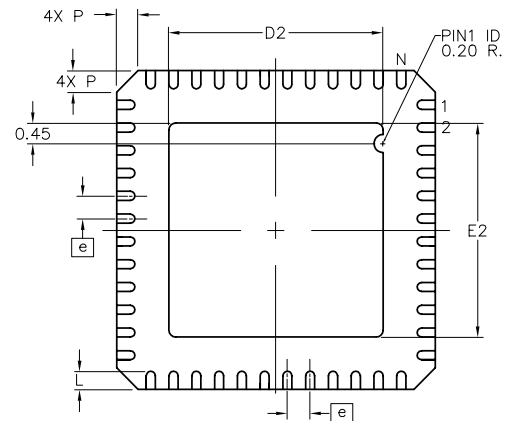


TOP VIEW



BOTTOM VIEW



SYMBOL	QFG32			QFG48		
	MILLIMETERS			MILLIMETERS		
	MIN.	NOM.	MAX.	MIN.	NOM.	MAX.
A	0.80	0.90	1.00	0.80	0.90	1.00
A ₁	0.00	0.02	0.05	0.00	0.02	0.05
A ₂	\approx	0.65	1.00	\approx	0.65	1.00
A ₃	0.20 REF			0.20 REF		
D/E	5.00 BSC			7.00 BSC		
D ₁ /E ₁	4.75 BSC			6.75 BSC		
D ₂ /E ₂	1.25	2.70	3.25	2.25	4.70	5.25
e	0.50 BSC.			0.50 BSC.		
L	0.30	0.40	0.50	0.30	0.40	0.50
b	0.18	0.25	0.30	0.18	0.25	0.30
θ	\approx	\approx	12°	\approx	\approx	12°
P	0.24	0.42	0.60	0.24	0.42	0.60
aaa	\approx	\approx	0.15	\approx	\approx	0.15
bbb	\approx	\approx	0.10	\approx	\approx	0.10
ccc	\approx	\approx	0.10	\approx	\approx	0.10
ddd	\approx	\approx	0.05	\approx	\approx	0.05
N	32			48		

NOTES:

- ALL DIMENSIONS AND TOLERANCES CONFORM TO ANSI Y14.5M-1994.
- THE TOP PACKAGE MAY BE SMALLER THAN THE BOTTOM PACKAGE BY 0.15mm.
- CONFORMS TO JEDEC M0-220
- MARK ORIENTATION WITH RESPECT TO PIN-1 I.D. IF 2 OR MORE CIRCLES EXIST ON TOP OF THE PACKAGE, USE THE SMALLEST CIRCLE AS PIN-1 I.D.
- PLATING FINISH: 100% Matte Sn

32, 48 PIN – QUAD FLAT NO LEAD (QFG32, QFG48)